



MLS 7088038 Residential

\$439,000

1,688 sq ft
4 bedrooms
2 baths

2589 Lindgren Road
Bemidji MN 56601

Status: Active

Description:

If you're looking for a peaceful country home, come and see this beautifully updated 4BR/2BA home on a picturesque 4-acre lot with a single attached garage and (2) 40x80 sheds! One of the sheds is set up for a hockey rink! This home has tons of country charm and features new siding, kitchen, flooring, some windows, updated mechanicals and much more. Tons of wildlife live near this property and thousands of acres of public land are just a short ride/walk away from the driveway as well as serene and beautiful Lindgren Lake! There is additional acreage available.

Additional Details:

Year Built	1944
Lot Acres	4
Lot Dimensions	327x528
Garage Stalls	1
School District	31
Taxes	\$2,192
Taxes with Assessments	\$2,192
Tax Year	2026

Additional Features:

Basement: Unfinished **Fuel:** Electric, Propane **Garage:** 1 **Heat:** Baseboard, Forced Air **Sewer:** Mound Septic **Water:** 4-Inch Submersible **Air Conditioning:** Central Air

Driving Directions:

North on Irvine Ave 12 miles, right on Lindgren Rd 1.8 miles.



Listed By:
Century 21 Dickinson

Affinity Real Estate Inc. participates in the Regional Multiple Listing Service of Minnesota, Inc Broker Reciprocity (sm) program, allowing us to display other broker's listings on our website. All properties are subject to prior sale, change or withdrawal.



Call Affinity Real Estate

218-237-3333

info@affinityrealestate.com



Affinity Real Estate - 600 Park Avenue South - Park Rapids MN 56470



website: www.AffinityRealEstate.com | email: info@affinityrealestate.com | office: 218-237-3333 | fax: 218-237-3377

Affinity
REAL ESTATE INC

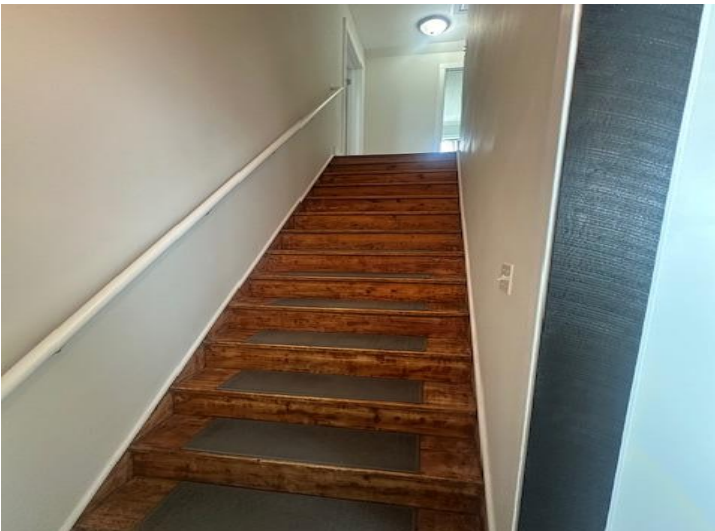
\$439,000
MLS 7088038 Residential
2589 Lindgren Road
Bemidji MN 56601



website: www.AffinityRealEstate.com | email: info@affinityrealestate.com | office: 218-237-3333 | fax: 218-237-3377

Affinity
REAL ESTATE INC

\$439,000
MLS 7088038 Residential
2589 Lindgren Road
Bemidji MN 56601



website: www.AffinityRealEstate.com | email: info@affinityrealestate.com | office: 218-237-3333 | fax:218-237-3377

Affinity
REAL ESTATE INC

\$439,000
MLS 7088038 Residential
2589 Lindgren Road
Bemidji MN 56601



website: www.AffinityRealEstate.com | email: info@affinityrealestate.com | office: 218-237-3333 | fax:218-237-3377

Affinity
REAL ESTATE INC

\$439,000
MLS 7088038 Residential
2589 Lindgren Road
Bemidji MN 56601



website: www.AffinityRealEstate.com | email: info@affinityrealestate.com | office: 218-237-3333 | fax:218-237-3377



\$439,000
MLS 7088038 Residential
2589 Lindgren Road
Bemidji MN 56601