



MLS 7088045 Lake Home

\$327,900

768 sq ft
2 bedrooms
1 baths

29231 Ashby Estates Road
Ashby MN 56309

Waterfront: Pelican

Status: Coming Soon

Description:

Welcome to easy lake living on beautiful Pelican Lake! Tucked away on a quiet dead-end road, this well-maintained year-round cabin offers 82 feet of shoreline and stunning panoramic lake views. Whether you're looking for a weekend retreat, fishing getaway, or a place to enjoy year-round recreation, this property delivers the perfect combination of comfort, simplicity, and lakefront enjoyment. Inside, you'll find a neat and updated 2-bedroom, 1-bath layout featuring natural woodwork, an open living area, central air conditioning, fiber optic internet, and a full unfinished basement offering excellent storage and future potential. The oversized detached garage provides plenty of room for vehicles, lake toys, and equipment. Step outside and enjoy your morning coffee on the deck, spend the day on the water, and end the evening taking in breathtaking Pelican Lake sunsets beneath the canopy of mature trees. The manageable lot size allows more time enjoying the lake and less time maintaining the property.

Pelican Lake is known for its excellent fishing, boating, and recreational opportunities, making this an ideal escape from the everyday hustle. Private well and sewer are already in place, and the dock and pontoon lift may be available separately.

If you've been searching for an affordable, move-in-ready lake property with year-round usability and unforgettable views, this Pelican Lake gem deserves your attention.


Additional Details:

Year Built	1972
Lot Acres	0.385
Lot Dimensions	110 212 82 177
Garage Stalls	1
School District	2908
Taxes	\$1,984
Taxes with Assessments	\$1,984
Tax Year	2026

Additional Features:

Fuel: Propane **Heat:** Forced Air

Driving Directions:

 Listed By:
 Randy Fischer Real Estate, Inc.
 Hwy 94 W toward Ashby Take exit 77 onto State Hwy 10
 County Hwy-10 Turn right onto State Highway 78
 Ashby Estates Road E to 29231
 Affinity Real Estate, Inc Broker Reciprocity (sm) program, allowing
 us to display other broker's listings on our website. All properties are
 subject to prior sale, change or withdrawal.



Call Affinity Real Estate

218-237-3333

info@affinityrealestate.com



Affinity Real Estate - 600 Park Avenue South - Park Rapids MN 56470



website: www.AffinityRealEstate.com | email: info@affinityrealestate.com | office: 218-237-3333 | fax:218-237-3377



\$327,900
MLS 7088045 Lake Home
29231 Ashby Estates Road
Ashby MN 56309



website: www.AffinityRealEstate.com | email: info@affinityrealestate.com | office: 218-237-3333 | fax: 218-237-3377

Affinity
REAL ESTATE INC

\$327,900
MLS 7088045 Lake Home
29231 Ashby Estates Road
Ashby MN 56309



website: www.AffinityRealEstate.com | email: info@affinityrealestate.com | office: 218-237-3333 | fax: 218-237-3377

Affinity
REAL ESTATE INC

\$327,900
MLS 7088045 Lake Home
29231 Ashby Estates Road
Ashby MN 56309



website: www.AffinityRealEstate.com | email: info@affinityrealestate.com | office: 218-237-3333 | fax: 218-237-3377

Affinity
REAL ESTATE INC

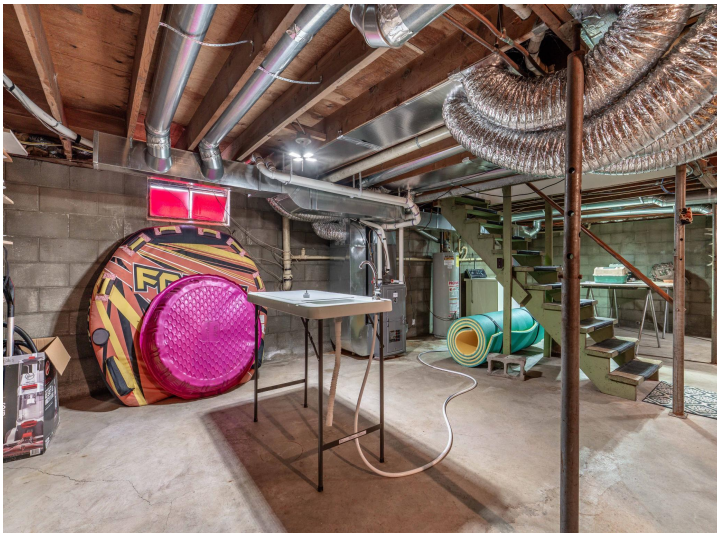
\$327,900
MLS 7088045 Lake Home
29231 Ashby Estates Road
Ashby MN 56309



website: www.AffinityRealEstate.com | email: info@affinityrealestate.com | office: 218-237-3333 | fax: 218-237-3377

Affinity
REAL ESTATE INC

\$327,900
MLS 7088045 Lake Home
29231 Ashby Estates Road
Ashby MN 56309



website: www.AffinityRealEstate.com | email: info@affinityrealestate.com | office: 218-237-3333 | fax:218-237-3377

Affinity
REAL ESTATE INC

\$327,900
MLS 7088045 Lake Home
29231 Ashby Estates Road
Ashby MN 56309



website: www.AffinityRealEstate.com | email: info@affinityrealestate.com | office: 218-237-3333 | fax: 218-237-3377

Affinity
REAL ESTATE INC

\$327,900
MLS 7088045 Lake Home
29231 Ashby Estates Road
Ashby MN 56309



website: www.AffinityRealEstate.com | email: info@affinityrealestate.com | office: 218-237-3333 | fax: 218-237-3377

Affinity
REAL ESTATE INC

\$327,900
MLS 7088045 Lake Home
29231 Ashby Estates Road
Ashby MN 56309



website: www.AffinityRealEstate.com | email: info@affinityrealestate.com | office: 218-237-3333 | fax:218-237-3377



\$327,900
MLS 7088045 Lake Home
29231 Ashby Estates Road
Ashby MN 56309