

MLS 7088104 Lake Land

**\$150,000**

**Description:**

Large Lot (1.33 acres) to build year round home or cabin with 1000 ft deeded access with boat slip on Lake Ida. Just minutes from Alexandria MN.

**Additional Details:**

Lot Acres	1.33
Lot Dimensions	175x300x175x300
School District	206
Taxes	\$560
Taxes with Assessments	\$560
Tax Year	2026

**Additional Features:**

**Driving Directions:**

County Rd 6 North turn right onto Betsy Ross Rd NW take a right on Betsy Ross Rd NW Lot is on the left.  
From Leaf Valley go south on County Road 6 take left on Betsy Ross Road NW then a right on Betsy Ross Rd NW Lot is on the Left



Listed By:  
Northstar Lakes Realty

Affinity Real Estate Inc. participates in the Regional Multiple Listing Service of Minnesota, Inc Broker Reciprocity (sm) program, allowing us to display other broker's listings on our website. All properties are subject to prior sale, change or withdrawal.



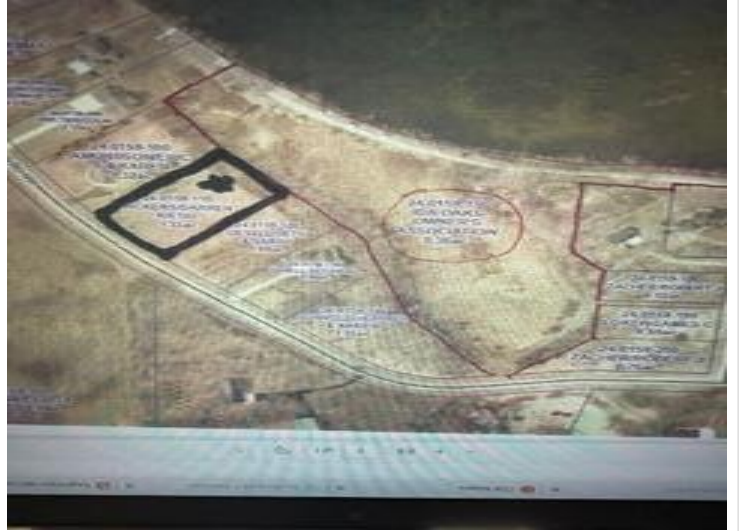
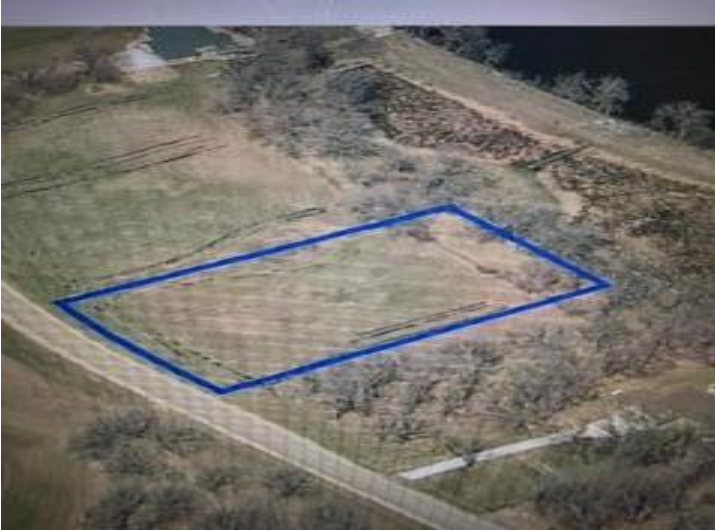
**Call Affinity Real Estate**

**218-237-3333**

**info@affinityrealestate.com**



**Affinity Real Estate - 600 Park Avenue South - Park Rapids MN 56470**



website: [www.AffinityRealEstate.com](http://www.AffinityRealEstate.com) | email: [info@affinityrealestate.com](mailto:info@affinityrealestate.com) | office: 218-237-3333 | fax:218-237-3377



**\$150,000**  
MLS 7088104 Lake Land  
TBD Betsy Ross Road  
Alexandria MN 56308