



MLS 7088185 Land

\$225,000

6.2 Acres
Other

0 Elderberry Circle
Nevis MN 56467

Status: Active

Description:

Extremely hard to find 6+ acre parcel of land with a 40X80 metal building already in place. Great location, close to many of the areas premier lakes. The metal building was built by a local contractor and is stick framed and has large doors on both ends with a concrete slab and electricity hooked up. Plenty of room for all of your storage needs and plenty of space to add additional buildings!

Additional Details:

| | |
|------------------------|-----------------|
| Lot Acres | 6.2 |
| Lot Dimensions | 810x240x810x420 |
| School District | 308 |
| Taxes | \$444 |
| Taxes with Assessments | \$444 |
| Tax Year | 2025 |

Additional Features:

Driving Directions:

From Park Rapids go East on HWY 34 to a right on Elderberry Circle to property on the left.



Listed By:
Dane Arthur Real Estate Agency-Park Rapids

Affinity Real Estate Inc. participates in the Regional Multiple Listing Service of Minnesota, Inc Broker Reciprocity (sm) program, allowing us to display other broker's listings on our website. All properties are subject to prior sale, change or withdrawal.



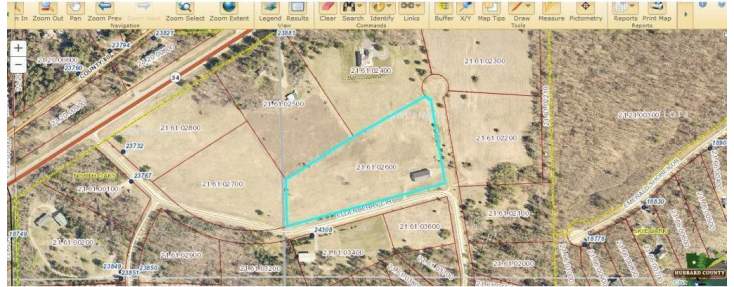
Call Affinity Real Estate

218-237-3333

info@affinityrealestate.com



Affinity Real Estate - 600 Park Avenue South - Park Rapids MN 56470



website: www.AffinityRealEstate.com | email: info@affinityrealestate.com | office: 218-237-3333 | fax:218-237-3377



\$225,000
MLS 7088185 Land
0 Elderberry Circle
Nevis MN 56467