

MLS 7088223 Land

\$99,900

4.56 Acres
Raw Land

TBD Tract N Peony Avenue
Aitkin MN 56431

Status: Active

Description:

Discover the perfect place to set-up camp or build your dream home or cabin. This gorgeous 4.56 acre wooded lot with abundant wildlife is the perfect "up north" retreat. In the heart of lake country, this peaceful development is only a half mile from Cedar Lake with great fishing and recreation all year long with a public access just down the road. Aitkin is just minutes away where you'll find shopping, dining, healthcare, and local amenities. Professional drone footage and pictures coming soon.

Additional Details:

Lot Acres	4.56
Lot Dimensions	304x524x185x672
School District	8001
Taxes	\$104
Taxes with Assessments	\$104
Tax Year	2026

Additional Features:

Driving Directions:

From Aitkin, Hwy 210 west 3 miles to left on County Rd 28 approximately 3 miles to right on 326th Ln to sign. From Garrison, Hwy 18 to Hwy 6 right to Hwy 210 right to Pioneer Ave (County Rd 28) right to 326th Ln right to Peony Ave right to sign.



Listed By:
North Pointe Realty Advantage

Affinity Real Estate Inc. participates in the Regional Multiple Listing Service of Minnesota, Inc Broker Reciprocity (sm) program, allowing us to display other broker's listings on our website. All properties are subject to prior sale, change or withdrawal.



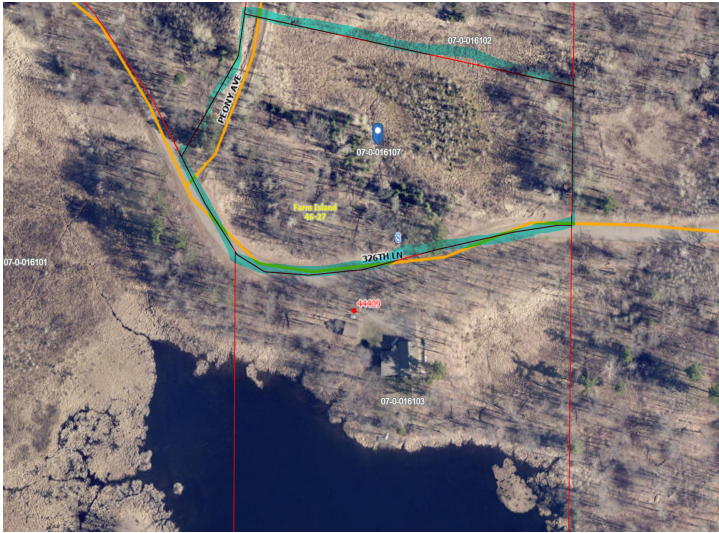
Call Affinity Real Estate

218-237-3333

info@affinityrealestate.com



Affinity Real Estate - 600 Park Avenue South - Park Rapids MN 56470



website: www.AffinityRealEstate.com | email: info@affinityrealestate.com | office: 218-237-3333 | fax:218-237-3377



\$99,900
MLS 7088223 Land
TBD Tract N Peony Avenue
Aitkin MN 56431