



MLS 7088302 Residential

\$324,900

1,680 sq ft
3 bedrooms
2 baths

4880 32nd Street
Pine River MN 56474

Status: Active

Description:

Fresh updates, room to roam, and 5 beautiful acres to make your own—this Pine River property brings together comfort, flexibility, and that sought-after up-north breathing room. Inside, you'll appreciate the peace of mind that comes with newer appliances, updated flooring, and major mechanicals already handled, including a newer furnace and A/C. The home feels fresh, functional, and ready for everyday living, with space to settle in and enjoy.

Outside is where the possibilities really open up. With 5 acres, there's room for gardens, chickens, goats, hobby farm dreams, outdoor projects, trails, or simply a little more privacy and elbow room. Whether you're hoping for a quieter lifestyle, space for animals, or a place to grow into your next chapter, this property offers the kind of flexibility that's hard to find. A great mix of updates, acreage, and potential—all just waiting for its next owner.

Additional Details:

Year Built	2006
Lot Acres	5.05
Lot Dimensions	660x330
Garage Stalls	2
School District	2174
Taxes	\$878
Taxes with Assessments	\$964
Tax Year	2026

Additional Features:

Basement: Crawl Space **Fuel:** Propane **Garage:** 2 **Heat:** Forced Air **Sewer:** Mound Septic, Private Sewer **Water:** Drilled **Air Conditioning:** Central Air

Driving Directions:

North on 371 to County Rd 2 (24th St SW) in Pine River, left turn. Left turn on 48th St SW, right at 32nd St SW, shared driveway on right.



Listed By:
LPT Realty, LLC.

Affinity Real Estate Inc. participates in the Regional Multiple Listing Service of Minnesota, Inc Broker Reciprocity (sm) program, allowing us to display other broker's listings on our website. All properties are subject to prior sale, change or withdrawal.



Call Affinity Real Estate

218-237-3333

info@affinityrealestate.com



Affinity Real Estate - 600 Park Avenue South - Park Rapids MN 56470



website: www.AffinityRealEstate.com | email: info@affinityrealestate.com | office: 218-237-3333 | fax:218-237-3377

Affinity
REAL ESTATE INC

\$324,900
MLS 7088302 Residential
4880 32nd Street
Pine River MN 56474



website: www.AffinityRealEstate.com | email: info@affinityrealestate.com | office: 218-237-3333 | fax:218-237-3377

Affinity
REAL ESTATE INC

\$324,900
MLS 7088302 Residential
4880 32nd Street
Pine River MN 56474



website: www.AffinityRealEstate.com | email: info@affinityrealestate.com | office: 218-237-3333 | fax: 218-237-3377

Affinity
REAL ESTATE INC

\$324,900
MLS 7088302 Residential
4880 32nd Street
Pine River MN 56474



website: www.AffinityRealEstate.com | email: info@affinityrealestate.com | office: 218-237-3333 | fax:218-237-3377



\$324,900
MLS 7088302 Residential
4880 32nd Street
Pine River MN 56474



website: www.AffinityRealEstate.com | email: info@affinityrealestate.com | office: 218-237-3333 | fax: 218-237-3377

Affinity
REAL ESTATE INC

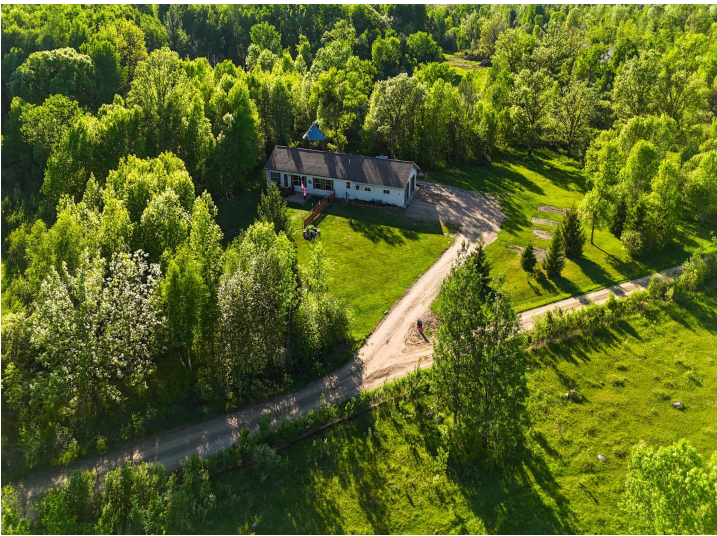
\$324,900
MLS 7088302 Residential
4880 32nd Street
Pine River MN 56474



website: www.AffinityRealEstate.com | email: info@affinityrealestate.com | office: 218-237-3333 | fax:218-237-3377



\$324,900
MLS 7088302 Residential
4880 32nd Street
Pine River MN 56474



website: www.AffinityRealEstate.com | email: info@affinityrealestate.com | office: 218-237-3333 | fax:218-237-3377

Affinity
REAL ESTATE INC

\$324,900
MLS 7088302 Residential
4880 32nd Street
Pine River MN 56474