



MLS 7088334 Lake Land

**\$50,000**

**Description:**

Another shed pad UNDER CONTRACT!  
Hurry & choose your shed pad location!  
PELICAN LAKE AREA STORAGE CONDO OPPORTUNITY!  
Storage opportunities like this are extremely hard to find in the Pelican Lake area.  
These professionally structured condo pad sites offer secure, uniform shop space with long-term resale value.  
If you struggle to find storage for all of your lake toys, patio furniture, and overflow seasonal items, your future storage building site is conveniently located on the SE side of Pelican Lake.


**Property Details**

Pad Size: 34' x 66' (LAND ONLY for \$50,000)  
Approved Shed Size: 32' x 60'  
Similar color, design, and builder restrictions apply  
CIC (Common Interest Community)  
HOA – \$126/Month  
Covers: Lawn mowing, Snow removal, and Weed trimming around the sheds and Hazard Ins.  
Electric to pump house for shared well  
Shared well option available (separate costs apply).  
Utilities & Responsibilities  
MN Natural Gas has service to the area, allowing owners the opportunity to heat and finish their shop.  
Owners are responsible for their own gas, well connections, electric meter, and electric service.  
Several units have installed holding tanks.  
Located on the corner of Fish Lake Road and City. Hwy. #31  
A rare chance to secure quality storage/shop space in a highly desirable lakes area location.  
NOW ONLY 4 REMAINING!

**Additional Details:**

Lot Acres 0.05  
Lot Dimensions 34 x 66

School District 22


 Listed By \$194  
 Counselor Realty Detroit Lakes  
 Taxes with Assessments \$194  
 Tax Year 2025  
 Affinity Real Estate Inc. participates in the Regional Multiple Listing Service of Minnesota, Inc Broker Reciprocity (sm) program, allowing us to display other broker's listings on our website. All properties are subject to prior sale; change or withdrawal.



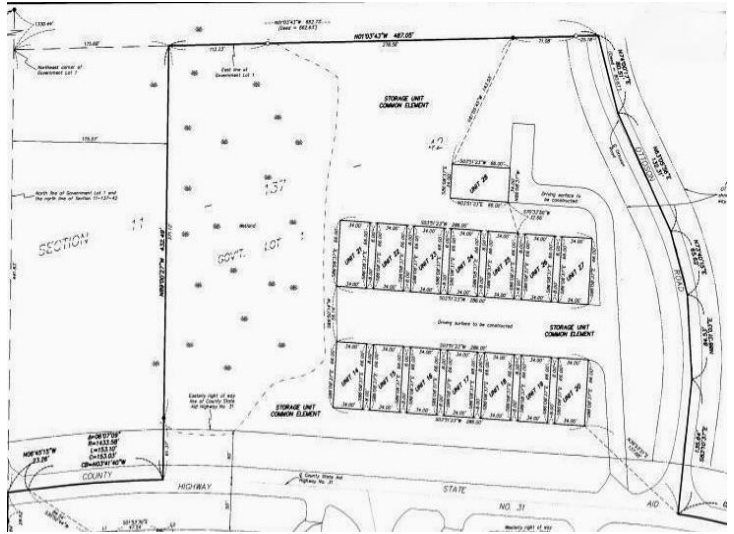
**Call Affinity Real Estate**  
**218-237-3333**  
**info@affinityrealestate.com**



**Affinity Real Estate - 600 Park Avenue South - Park Rapids MN 56470**

**Driving Directions:**

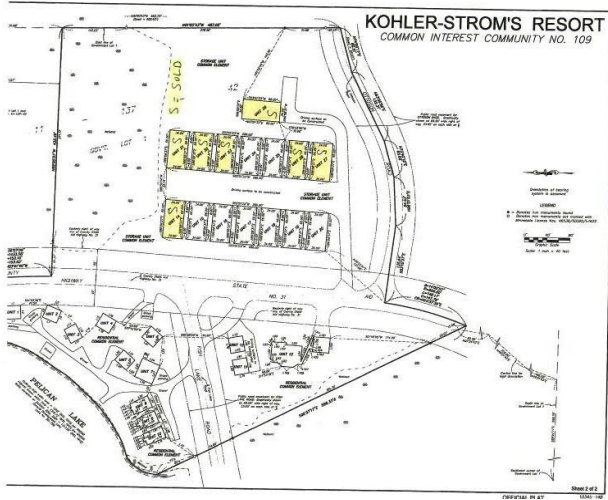
From Hwy 59 Go West on Cty Rd 20 to County Rd 31 South, just past the Pelican Lake East Boat access. Storage shed pads are on the east side



website: [www.AffinityRealEstate.com](http://www.AffinityRealEstate.com) | email: [info@affinityrealestate.com](mailto:info@affinityrealestate.com) | office: 218-237-3333 | fax: 218-237-3377



**\$50,000**  
 MLS 7088334 Lake Land  
 51021 #20 Fish Lake Rd  
 Detroit Lakes MN 56501



website: [www.AffinityRealEstate.com](http://www.AffinityRealEstate.com) | email: [info@affinityrealestate.com](mailto:info@affinityrealestate.com) | office: 218-237-3333 | fax:218-237-3377



**\$50,000**  
MLS 7088334 Lake Land  
51021 #20 Fish Lake Rd  
Detroit Lakes MN 56501