



MLS 7088360 Residential

**\$399,000**

2,380 sq ft  
5 bedrooms  
2 baths

18845 Morrison Line Road  
Swanville MN 56382

Status: Active

**Description:**

Enjoy country living with room to spread out on 5 acres in this spacious 5 bedroom, 2 bathroom home featuring major exterior updates and an impressive garage setup. The home offers newer steel siding and a steel roof for lasting durability and low-maintenance peace of mind. Inside, you'll find newer appliances, updated flooring and cabinetry creating a comfortable and move-in-ready feel throughout. The lower level offers a large family room with a walkout, providing additional living space for relaxing, entertaining, or gathering with family and friends. One of the standout features of this property is the stunning oversized garage, complete with large 12-foot-high doors and in-floor heat, perfect for trucks, equipment, toys, storage, workshop space, or hobby use. With generous living space, practical updates, acreage, and a highly desirable country setting, this property offers space, function, and flexibility. Do not wait on this amazing property.

**Additional Details:**

Year Built	1960
Lot Acres	5.49
Lot Dimensions	5 Acres
Garage Stalls	3
School District	486
Taxes	\$4,250
Taxes with Assessments	\$4,250
Tax Year	2026

**Additional Features:**

**Basement:** Finished, Full, In-Floor Heat, Walkout **Fuel:** Propane **Garage:** 3 **Heat:** Forced Air, In-Floor Heating **Sewer:** Septic System Compliant - Yes **Water:** Well **Air Conditioning:** Central Air

**Driving Directions:**

From Swanville south to Balcony Rd then strait to 10th Ave property on right.



Listed By:  
eXp Realty

Affinity Real Estate Inc. participates in the Regional Multiple Listing Service of Minnesota, Inc Broker Reciprocity (sm) program, allowing us to display other broker's listings on our website. All properties are subject to prior sale, change or withdrawal.



Call Affinity Real Estate

**218-237-3333**

[info@affinityrealestate.com](mailto:info@affinityrealestate.com)



Affinity Real Estate - 600 Park Avenue South - Park Rapids MN 56470



website: [www.AffinityRealEstate.com](http://www.AffinityRealEstate.com) | email: [info@affinityrealestate.com](mailto:info@affinityrealestate.com) | office: 218-237-3333 | fax:218-237-3377



**\$399,000**  
MLS 7088360 Residential  
18845 Morrison Line Road  
Swanville MN 56382



website: [www.AffinityRealEstate.com](http://www.AffinityRealEstate.com) | email: [info@affinityrealestate.com](mailto:info@affinityrealestate.com) | office: 218-237-3333 | fax:218-237-3377

**Affinity**  
REAL ESTATE INC

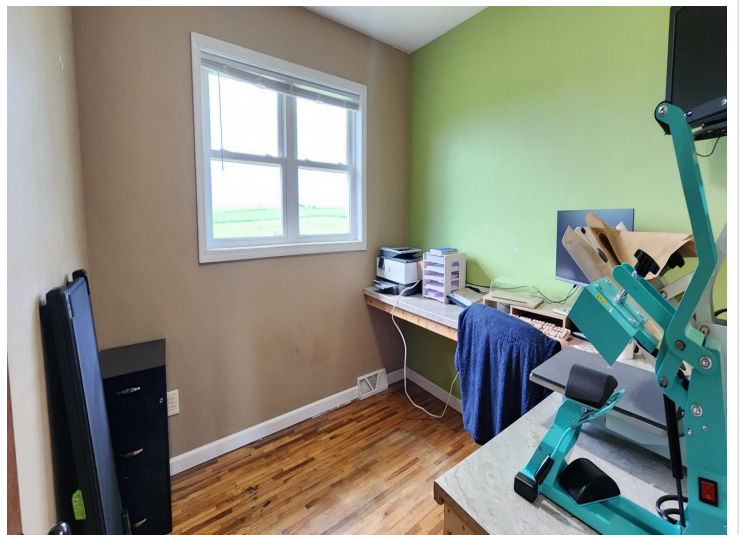
**\$399,000**  
MLS 7088360 Residential  
18845 Morrison Line Road  
Swanville MN 56382



website: [www.AffinityRealEstate.com](http://www.AffinityRealEstate.com) | email: [info@affinityrealestate.com](mailto:info@affinityrealestate.com) | office: 218-237-3333 | fax:218-237-3377

**Affinity**  
REAL ESTATE INC

**\$399,000**  
MLS 7088360 Residential  
18845 Morrison Line Road  
Swanville MN 56382



website: [www.AffinityRealEstate.com](http://www.AffinityRealEstate.com) | email: [info@affinityrealestate.com](mailto:info@affinityrealestate.com) | office: 218-237-3333 | fax:218-237-3377

**Affinity**  
REAL ESTATE INC

**\$399,000**  
MLS 7088360 Residential  
18845 Morrison Line Road  
Swanville MN 56382



website: [www.AffinityRealEstate.com](http://www.AffinityRealEstate.com) | email: [info@affinityrealestate.com](mailto:info@affinityrealestate.com) | office: 218-237-3333 | fax:218-237-3377

**Affinity**  
REAL ESTATE INC

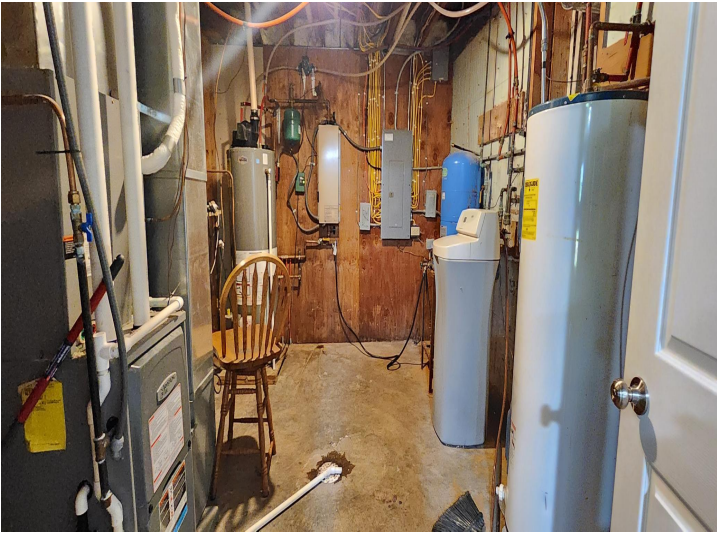
**\$399,000**  
MLS 7088360 Residential  
18845 Morrison Line Road  
Swanville MN 56382



website: [www.AffinityRealEstate.com](http://www.AffinityRealEstate.com) | email: [info@affinityrealestate.com](mailto:info@affinityrealestate.com) | office: 218-237-3333 | fax:218-237-3377

**Affinity**  
REAL ESTATE INC

**\$399,000**  
MLS 7088360 Residential  
18845 Morrison Line Road  
Swanville MN 56382



website: [www.AffinityRealEstate.com](http://www.AffinityRealEstate.com) | email: [info@affinityrealestate.com](mailto:info@affinityrealestate.com) | office: 218-237-3333 | fax:218-237-3377



**\$399,000**  
MLS 7088360 Residential  
18845 Morrison Line Road  
Swanville MN 56382