



MLS 7088477 Residential

\$275,000

1,152 sq ft
3 bedrooms
1 baths

10115 Depot Street
Brainerd MN 56401

Status: Active

Description:

Well-maintained home situated on a large 1+ acre lot with plenty of room to enjoy the outdoors. The property features a spacious yard perfect for entertaining, gardening, or recreation, along with a large pole shed offering excellent storage space for vehicles, equipment, and hobbies. This is a great opportunity for homeowners looking for space, functionality, and value.

Additional Details:

Year Built	1968
Lot Acres	1.26
Lot Dimensions	333x150
Garage Stalls	4
School District	181
Taxes	\$1,080
Taxes with Assessments	\$1,080
Tax Year	2025

Additional Features:

Basement: Crawl Space **Fuel:** Propane **Garage:** 4 **Heat:** Forced Air **Sewer:** Tank with Drainage Field **Water:** Drilled **Air Conditioning:** Central Air

Driving Directions:

Driving west on Business 371 take a right on depot street, house is on left side



Listed By:
Northland Sotheby's International Realty

Affinity Real Estate Inc. participates in the Regional Multiple Listing Service of Minnesota, Inc Broker Reciprocity (sm) program, allowing us to display other broker's listings on our website. All properties are subject to prior sale, change or withdrawal.



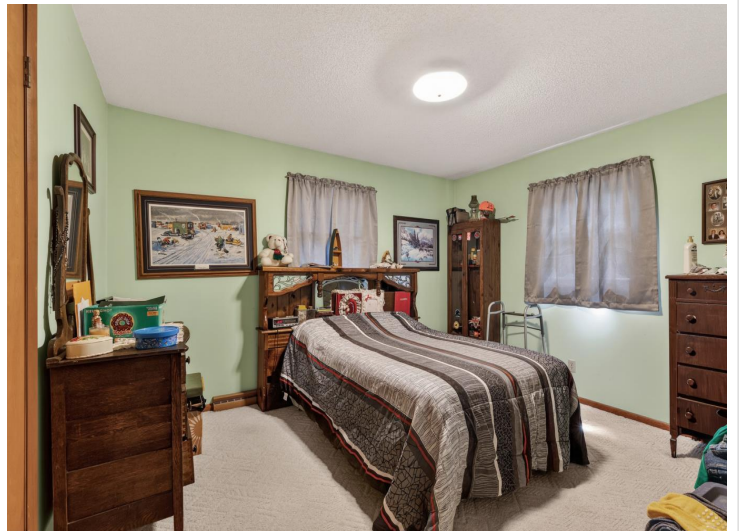
Call Affinity Real Estate

218-237-3333

info@affinityrealestate.com



Affinity Real Estate - 600 Park Avenue South - Park Rapids MN 56470



website: www.AffinityRealEstate.com | email: info@affinityrealestate.com | office: 218-237-3333 | fax:218-237-3377

Affinity
REAL ESTATE INC

\$275,000
MLS 7088477 Residential
10115 Depot Street
Brainerd MN 56401



website: www.AffinityRealEstate.com | email: info@affinityrealestate.com | office: 218-237-3333 | fax:218-237-3377

Affinity
REAL ESTATE INC

\$275,000
MLS 7088477 Residential
10115 Depot Street
Brainerd MN 56401