



MLS 7088553 Residential

\$394,800

2,193 sq ft
3 bedrooms
2 baths

6000 Midvalley Lane
Bemidji MN 56601

Status: Active

Description:

Better than new! This 2025 build is like buying new construction with much of the finishing and upgrades already done. Additions/Upgrades include: Granite countertops, Large custom shower, oversize asphalt driveway, Tankless Water heater, Gutters/Covers, Pentair water softener, Garage heater, Washer/Dryer, and more!
The oversize 3 stall garage has room for all your vehicles and all your toys.
Don't buy new and spend thousands on upgrades and finishes. Get it all, move right in and enjoy on day one!
Outdoor Jacuzzi and Garage Fridge are negotiable.

Additional Details:


Year Built	2025
Lot Acres	1.04
Lot Dimensions	152x300
Garage Stalls	3
School District	31
Taxes	\$4,114
Taxes with Assessments	\$4,114
Tax Year	2026

Additional Features:

Basement: None **Fuel:** Propane **Garage:** 3 **Heat:** Forced Air **Sewer:** Septic System Compliant - Yes **Water:** Well **Air Conditioning:** Central Air

Driving Directions:

From downtown Bemidji, Head west on 5th street, head north (right) on Archery Ln, then right on Mid Valley Ln Nw. Look for sign on right.

 Listed By:
Better Homes and Gardens Real Estate First Cho

Affinity Real Estate Inc. participates in the Regional Multiple Listing Service of Minnesota, Inc Broker Reciprocity (sm) program, allowing us to display other broker's listings on our website. All properties are subject to prior sale, change or withdrawal.

 **Call Affinity Real Estate**
218-237-3333
info@affinityrealestate.com

  
Affinity Real Estate - 600 Park Avenue South - Park Rapids MN 56470



website: www.AffinityRealEstate.com | email: info@affinityrealestate.com | office: 218-237-3333 | fax: 218-237-3377

Affinity
REAL ESTATE INC

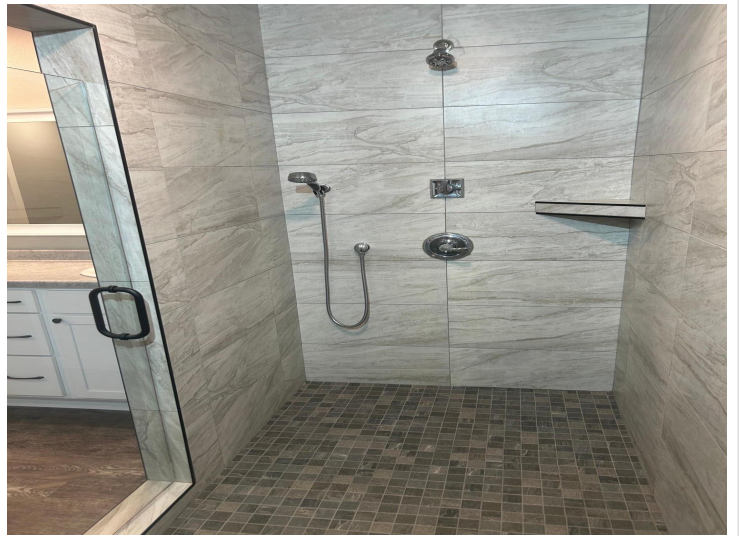
\$394,800
MLS 7088553 Residential
6000 Midvalley Lane
Bemidji MN 56601



website: www.AffinityRealEstate.com | email: info@affinityrealestate.com | office: 218-237-3333 | fax: 218-237-3377

Affinity
REAL ESTATE INC

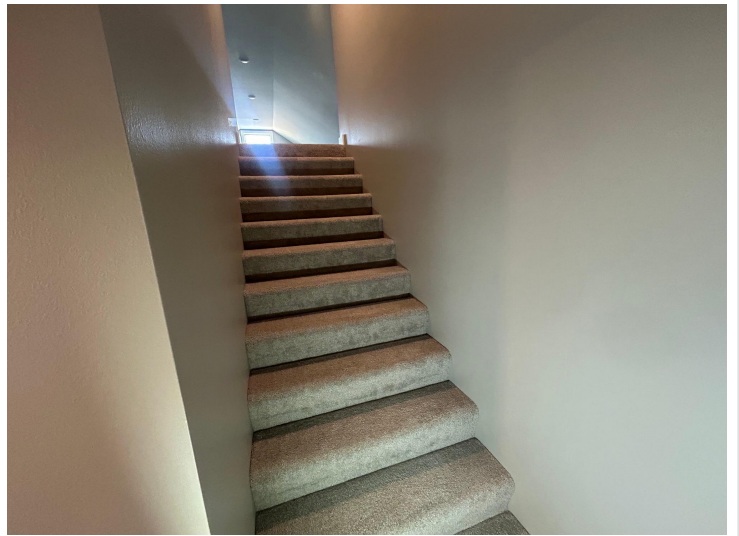
\$394,800
MLS 7088553 Residential
6000 Midvalley Lane
Bemidji MN 56601



website: www.AffinityRealEstate.com | email: info@affinityrealestate.com | office: 218-237-3333 | fax:218-237-3377

Affinity
REAL ESTATE INC

\$394,800
MLS 7088553 Residential
6000 Midvalley Lane
Bemidji MN 56601



website: www.AffinityRealEstate.com | email: info@affinityrealestate.com | office: 218-237-3333 | fax:218-237-3377

Affinity
REAL ESTATE INC

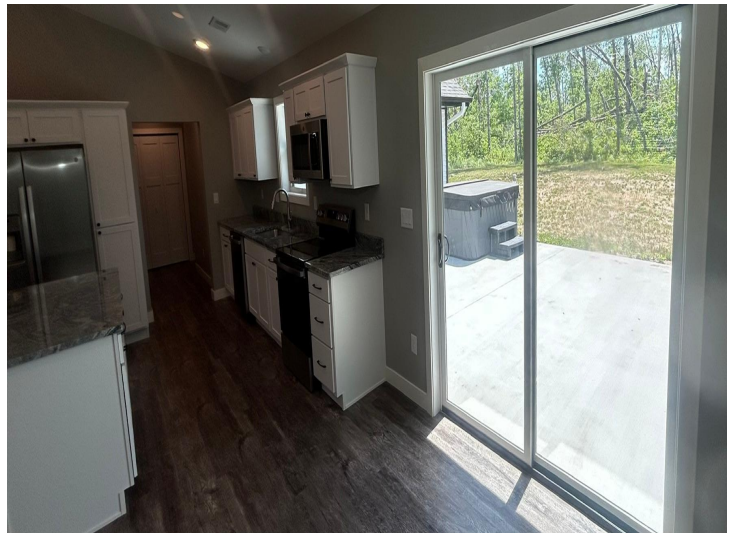
\$394,800
MLS 7088553 Residential
6000 Midvalley Lane
Bemidji MN 56601



website: www.AffinityRealEstate.com | email: info@affinityrealestate.com | office: 218-237-3333 | fax: 218-237-3377



\$394,800
MLS 7088553 Residential
6000 Midvalley Lane
Bemidji MN 56601



website: www.AffinityRealEstate.com | email: info@affinityrealestate.com | office: 218-237-3333 | fax:218-237-3377

Affinity
REAL ESTATE INC

\$394,800
MLS 7088553 Residential
6000 Midvalley Lane
Bemidji MN 56601



website: www.AffinityRealEstate.com | email: info@affinityrealestate.com | office: 218-237-3333 | fax:218-237-3377



\$394,800
MLS 7088553 Residential
6000 Midvalley Lane
Bemidji MN 56601