



MLS 7088614 Lake Home

\$599,900

2,464 sq ft
4 bedrooms
2 baths

23199 Shore Drive
Emily MN 56447

Waterfront: Mary

Status: Coming Soon

Description:

Beautifully maintained 4-bedroom, 2-bath Lake Mary home situated on 1.6 acres with 160 feet of lake frontage. This inviting property features a spacious 2-story great room with stunning lake-facing windows that fill the home with natural light and showcase breathtaking views. The kitchen offers granite countertops and newer appliances, while the private, wooded setting provides peace and seclusion. A loft area serves two upper-level bedrooms, and the lower-level family room is currently used as a bunk room for additional sleeping space. Outside, you'll find a detached 3-car garage with a separate heated shop, plus an additional storage shed for all your recreational gear. Conveniently located near all of Emily's amenities, ATV and snowmobile trails, public hunting land, hiking opportunities, and year-round outdoor recreation. A perfect Northwoods retreat or full-time lakefront home.

Additional Details:


Year Built	1975
Lot Acres	1.61
Lot Dimensions	176x473x160x403
Garage Stalls	3
School District	182
Taxes	\$3,654
Taxes with Assessments	\$3,654
Tax Year	2025

Additional Features:

Basement: Block, Egress Window(s), Finished **Fuel:** Electric, Propane, Wood **Garage:** 3 **Heat:** Baseboard, Forced Air, Fireplace(s) **Sewer:** Private Sewer, Tank with Drainage Field **Water:** 4-Inch Submersible, Drilled, Private, Well **Air Conditioning:** Central Air

Driving Directions:

Co Rd 1 to Mary Lake Rd, Take right on North Shore Dr and the property is on the left.

 Listed By:
eXp Realty

Affinity Real Estate Inc. participates in the Regional Multiple Listing Service of Minnesota, Inc Broker Reciprocity (sm) program, allowing us to display other broker's listings on our website. All properties are subject to prior sale, change or withdrawal.

 **Call Affinity Real Estate**
218-237-3333
info@affinityrealestate.com

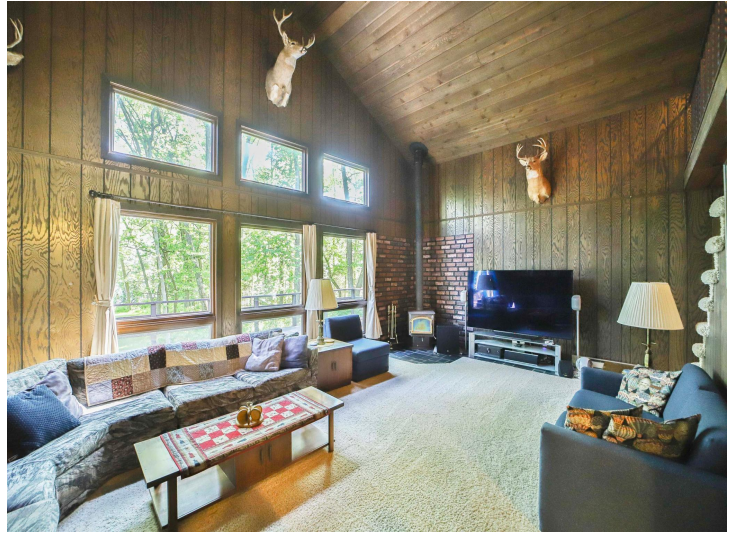
Affinity Real Estate - 600 Park Avenue South - Park Rapids MN 56470



website: www.AffinityRealEstate.com | email: info@affinityrealestate.com | office: 218-237-3333 | fax:218-237-3377



\$599,900
MLS 7088614 Lake Home
23199 Shore Drive
Emily MN 56447



website: www.AffinityRealEstate.com | email: info@affinityrealestate.com | office: 218-237-3333 | fax: 218-237-3377

Affinity
REAL ESTATE INC

\$599,900
MLS 7088614 Lake Home
23199 Shore Drive
Emily MN 56447



website: www.AffinityRealEstate.com | email: info@affinityrealestate.com | office: 218-237-3333 | fax: 218-237-3377

Affinity
REAL ESTATE INC

\$599,900
MLS 7088614 Lake Home
23199 Shore Drive
Emily MN 56447



website: www.AffinityRealEstate.com | email: info@affinityrealestate.com | office: 218-237-3333 | fax:218-237-3377

Affinity
REAL ESTATE INC

\$599,900
MLS 7088614 Lake Home
23199 Shore Drive
Emily MN 56447



website: www.AffinityRealEstate.com | email: info@affinityrealestate.com | office: 218-237-3333 | fax: 218-237-3377

Affinity
REAL ESTATE INC

\$599,900
MLS 7088614 Lake Home
23199 Shore Drive
Emily MN 56447



website: www.AffinityRealEstate.com | email: info@affinityrealestate.com | office: 218-237-3333 | fax:218-237-3377

Affinity
REAL ESTATE INC

\$599,900
MLS 7088614 Lake Home
23199 Shore Drive
Emily MN 56447



website: www.AffinityRealEstate.com | email: info@affinityrealestate.com | office: 218-237-3333 | fax:218-237-3377



\$599,900
MLS 7088614 Lake Home
23199 Shore Drive
Emily MN 56447



website: www.AffinityRealEstate.com | email: info@affinityrealestate.com | office: 218-237-3333 | fax:218-237-3377



\$599,900
MLS 7088614 Lake Home
23199 Shore Drive
Emily MN 56447



website: www.AffinityRealEstate.com | email: info@affinityrealestate.com | office: 218-237-3333 | fax:218-237-3377



\$599,900
MLS 7088614 Lake Home
23199 Shore Drive
Emily MN 56447