



MLS 7088615 Residential

\$474,900

2,043 sq ft
3 bedrooms
3 baths

2331 Nature Lane
Hawley MN 56549

Status: Active

Description:

Welcome home to this clean, stylish, and thoughtfully designed 3-bedroom, 3-bathroom home with a 3-stall garage—perfect for modern living. The main floor offers a welcoming layout with a convenient half bath, a functional mudroom off the garage, and a flex room just off the kitchen that’s currently a playroom but can easily transform into an office, hobby space, or dining area. The kitchen shines with trendy two-tone cabinets and flows effortlessly into the living and dining spaces, making everyday life and entertaining a breeze. Upstairs, all three bedrooms are conveniently located on one level, including a spacious primary suite featuring a walk-in closet and private bathroom with a separate bath and shower. You’ll also love the upper-level laundry—right where you need it. Downstairs, the unfinished basement is a blank slate ready for whatever you can dream up. Step outside to enjoy the outdoor patio and large backyard, offering plenty of space to relax, play, or entertain. Schedule a showing today!

Additional Details:

Year Built	2019
Lot Acres	0.295
Lot Dimensions	84x156
Garage Stalls	3
School District	150
Taxes	\$6,495
Taxes with Assessments	\$9,910
Tax Year	2025

Additional Features:

Basement: Unfinished **Fuel:** Natural Gas **Garage:** 3 **Heat:** Forced Air **Sewer:** City Sewer/Connected **Water:** City Water/Connected **Air Conditioning:** Central Air

Driving Directions:

Travel onto US 10 E/Viking Trail, turn on to 225th St N, turn onto Nature Lane



Listed By:
Prime Realty

Affinity Real Estate Inc. participates in the Regional Multiple Listing Service of Minnesota, Inc Broker Reciprocity (sm) program, allowing us to display other broker’s listings on our website. All properties are subject to prior sale, change or withdrawal.



Call Affinity Real Estate

218-237-3333

info@affinityrealestate.com



Affinity Real Estate - 600 Park Avenue South - Park Rapids MN 56470



website: www.AffinityRealEstate.com | email: info@affinityrealestate.com | office: 218-237-3333 | fax: 218-237-3377

Affinity
REAL ESTATE INC

\$474,900
MLS 7088615 Residential
2331 Nature Lane
Hawley MN 56549



website: www.AffinityRealEstate.com | email: info@affinityrealestate.com | office: 218-237-3333 | fax: 218-237-3377

Affinity
REAL ESTATE INC

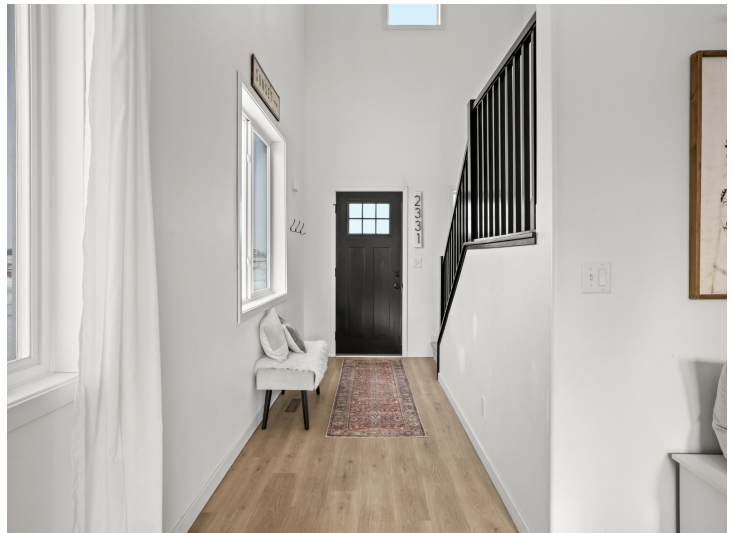
\$474,900
MLS 7088615 Residential
2331 Nature Lane
Hawley MN 56549



website: www.AffinityRealEstate.com | email: info@affinityrealestate.com | office: 218-237-3333 | fax: 218-237-3377

Affinity
REAL ESTATE INC

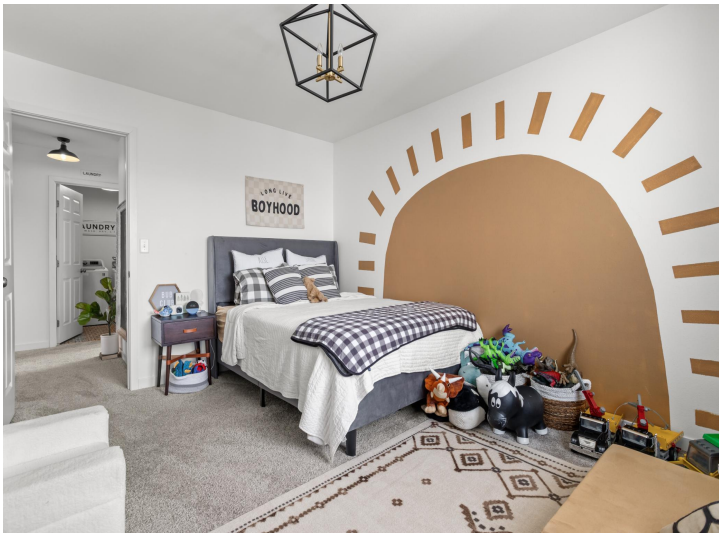
\$474,900
MLS 7088615 Residential
2331 Nature Lane
Hawley MN 56549



website: www.AffinityRealEstate.com | email: info@affinityrealestate.com | office: 218-237-3333 | fax:218-237-3377



\$474,900
MLS 7088615 Residential
2331 Nature Lane
Hawley MN 56549



website: www.AffinityRealEstate.com | email: info@affinityrealestate.com | office: 218-237-3333 | fax:218-237-3377



\$474,900
MLS 7088615 Residential
2331 Nature Lane
Hawley MN 56549



website: www.AffinityRealEstate.com | email: info@affinityrealestate.com | office: 218-237-3333 | fax:218-237-3377



\$474,900
MLS 7088615 Residential
2331 Nature Lane
Hawley MN 56549



website: www.AffinityRealEstate.com | email: info@affinityrealestate.com | office: 218-237-3333 | fax:218-237-3377



\$474,900
MLS 7088615 Residential
2331 Nature Lane
Hawley MN 56549



website: www.AffinityRealEstate.com | email: info@affinityrealestate.com | office: 218-237-3333 | fax: 218-237-3377

Affinity
REAL ESTATE INC

\$474,900
MLS 7088615 Residential
2331 Nature Lane
Hawley MN 56549



website: www.AffinityRealEstate.com | email: info@affinityrealestate.com | office: 218-237-3333 | fax:218-237-3377



\$474,900
MLS 7088615 Residential
2331 Nature Lane
Hawley MN 56549