



MLS 7088618 Residential

**\$282,400**

1,412 sq ft  
3 bedrooms  
2 baths

528 St Charles Avenue  
Fergus Falls MN 56537

Status: Active

**Description:**

Brand-new in 2025 and never occupied, this 1,412 sq. ft., 3 bedroom 2 bath home offers the convenience of one-level living with quality finishes and a thoughtfully designed floor plan. The open layout provides comfortable living and entertaining spaces, complemented by in-floor heat throughout for year-round comfort. Features include a finished attached garage, concrete driveway, low-maintenance vinyl siding, durable asphalt shingle roofing, and a vinyl privacy fence between the neighboring home. Designed for easy living and low-maintenance ownership, this move-in-ready home is a rare opportunity in Fergus Falls. Buyer eligibility requirements apply; contact for details.

**Additional Details:**

Year Built	2025
Lot Acres	0.18
Lot Dimensions	50'x150'
Garage Stalls	1
School District	544
Taxes	\$166
Taxes with Assessments	\$166
Tax Year	2025

**Additional Features:**

**Basement:** None **Fuel:** Natural Gas **Garage:** 1 **Heat:** In-Floor Heating **Sewer:** City Sewer/Connected **Water:** City Water/Connected **Air Conditioning:** Ductless Mini-Split

**Driving Directions:**

Turn South onto S Sheridan St, continue for 0.4 miles, Turn left onto E St Charles Ave, and the Property will be on the right.



Listed By:  
Keller Williams Classic Rlty N

Affinity Real Estate Inc. participates in the Regional Multiple Listing Service of Minnesota, Inc Broker Reciprocity (sm) program, allowing us to display other broker's listings on our website. All properties are subject to prior sale, change or withdrawal.



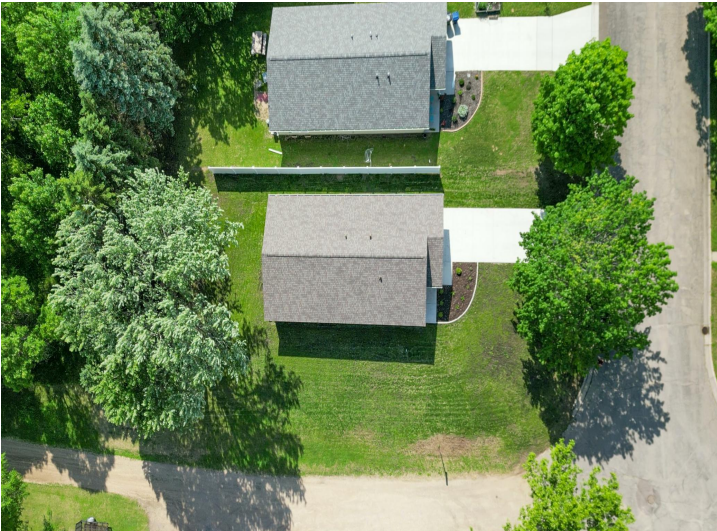
**Call Affinity Real Estate**

**218-237-3333**

**info@affinityrealestate.com**



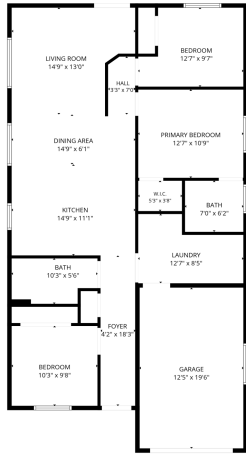
**Affinity Real Estate - 600 Park Avenue South - Park Rapids MN 56470**



website: [www.AffinityRealEstate.com](http://www.AffinityRealEstate.com) | email: [info@affinityrealestate.com](mailto:info@affinityrealestate.com) | office: 218-237-3333 | fax:218-237-3377

**Affinity**  
REAL ESTATE INC

**\$282,400**  
MLS 7088618 Residential  
528 St Charles Avenue  
Fergus Falls MN 56537



FLOOR PLAN CREATED BY CURICASA APP. MEASUREMENTS DEEMED HIGHLY RELIABLE BUT NOT GUARANTEED.



website: [www.AffinityRealEstate.com](http://www.AffinityRealEstate.com) | email: [info@affinityrealestate.com](mailto:info@affinityrealestate.com) | office: 218-237-3333 | fax: 218-237-3377



**\$282,400**  
 MLS 7088618 Residential  
 528 St Charles Avenue  
 Fergus Falls MN 56537



website: [www.AffinityRealEstate.com](http://www.AffinityRealEstate.com) | email: [info@affinityrealestate.com](mailto:info@affinityrealestate.com) | office: 218-237-3333 | fax: 218-237-3377

**Affinity**  
REAL ESTATE INC

**\$282,400**  
MLS 7088618 Residential  
528 St Charles Avenue  
Fergus Falls MN 56537



website: [www.AffinityRealEstate.com](http://www.AffinityRealEstate.com) | email: [info@affinityrealestate.com](mailto:info@affinityrealestate.com) | office: 218-237-3333 | fax:218-237-3377



**\$282,400**  
MLS 7088618 Residential  
528 St Charles Avenue  
Fergus Falls MN 56537



website: [www.AffinityRealEstate.com](http://www.AffinityRealEstate.com) | email: [info@affinityrealestate.com](mailto:info@affinityrealestate.com) | office: 218-237-3333 | fax: 218-237-3377

**Affinity**  
REAL ESTATE INC

**\$282,400**  
MLS 7088618 Residential  
528 St Charles Avenue  
Fergus Falls MN 56537



website: [www.AffinityRealEstate.com](http://www.AffinityRealEstate.com) | email: [info@affinityrealestate.com](mailto:info@affinityrealestate.com) | office: 218-237-3333 | fax:218-237-3377



**\$282,400**  
MLS 7088618 Residential  
528 St Charles Avenue  
Fergus Falls MN 56537