



MLS 7088661 Lake Home

\$369,900

2,455 sq ft
4 bedrooms
3 baths

503 Bluff Avenue
Brainerd MN 56401

Waterfront: Mississippi River

Status: Active

Description:

Located in the historic Bluff Avenue neighborhood, this charming 4-bedroom, 3-bath home offers character, space, and rare Mississippi River frontage on a nearly 1-acre lot. Beautifully restored hardwood floors run throughout much of the home, blending classic craftsmanship with numerous recent updates including refreshed bathrooms, landscaping improvements, and other thoughtful enhancements that maintain the home's traditional feel while adding modern comfort. The spacious attic has been updated with fresh carpet and provides a large amount of versatile living space perfect for a bonus room, office, or guest area. With over 2,400 finished square feet, a large 30x24 detached garage, and approximately 42 feet of Mississippi River frontage, the property also offers close proximity to Essentia Health St. Joseph's Hospital, Gregory Park, downtown Brainerd. This is a rare opportunity to own a classic home in one of Brainerd's most desirable and walkable neighborhoods.

Additional Details:

Year Built	1895
Lot Acres	0.98
Lot Dimensions	42x539x82x236x106x745
Garage Stalls	2
School District	181
Taxes	\$3,301
Taxes with Assessments	\$3,326
Tax Year	2026

Additional Features:

Basement: Full, Other, Unfinished **Fuel:** Natural Gas **Garage:** 2 **Heat:** Boiler, Fireplace(s), Hot Water **Sewer:** City Sewer/Connected **Water:** City Water/Connected **Air Conditioning:** Window Unit(s)

Driving Directions:

MN 210 E to left onto N 5th St, right onto Bluff Ave



Listed By:
Positive Realty

Affinity Real Estate Inc. participates in the Regional Multiple Listing Service of Minnesota, Inc Broker Reciprocity (sm) program, allowing us to display other broker's listings on our website. All properties are subject to prior sale, change or withdrawal.



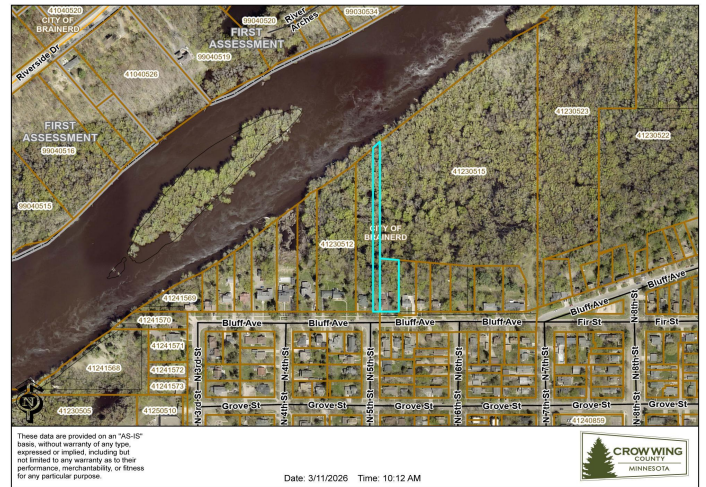
Call Affinity Real Estate

218-237-3333

info@affinityrealestate.com



Affinity Real Estate - 600 Park Avenue South - Park Rapids MN 56470



website: www.AffinityRealEstate.com | email: info@affinityrealestate.com | office: 218-237-3333 | fax:218-237-3377



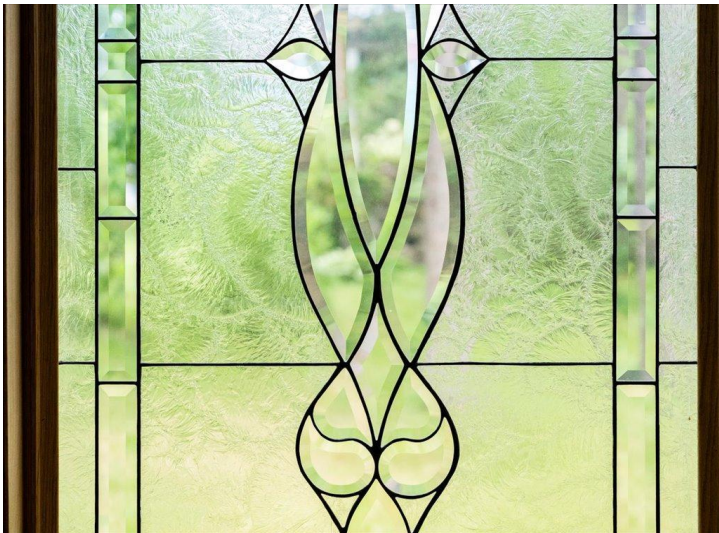
\$369,900
 MLS 7088661 Lake Home
 503 Bluff Avenue
 Brainerd MN 56401



website: www.AffinityRealEstate.com | email: info@affinityrealestate.com | office: 218-237-3333 | fax: 218-237-3377

Affinity
REAL ESTATE INC

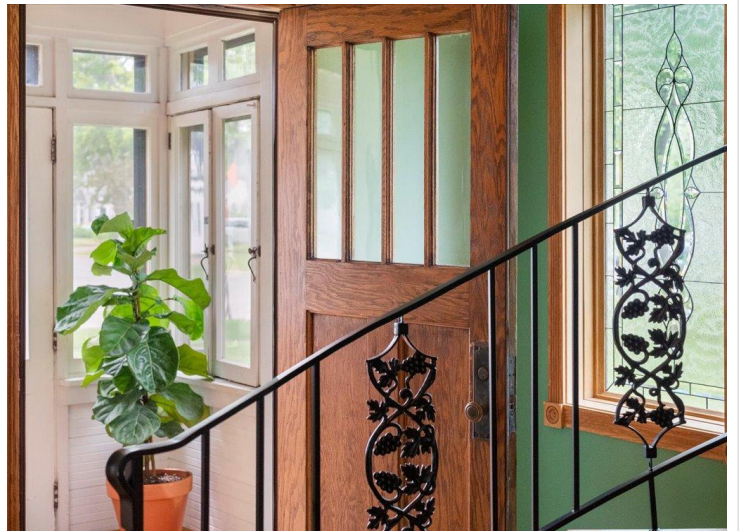
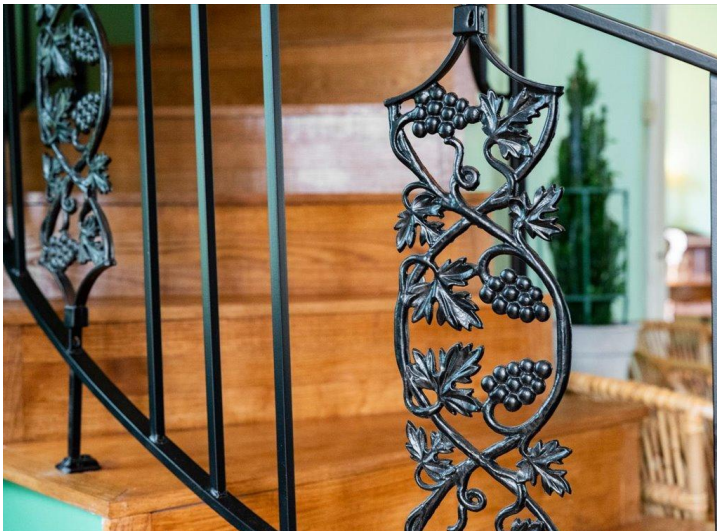
\$369,900
MLS 7088661 Lake Home
503 Bluff Avenue
Brainerd MN 56401



website: www.AffinityRealEstate.com | email: info@affinityrealestate.com | office: 218-237-3333 | fax:218-237-3377

Affinity
REAL ESTATE INC

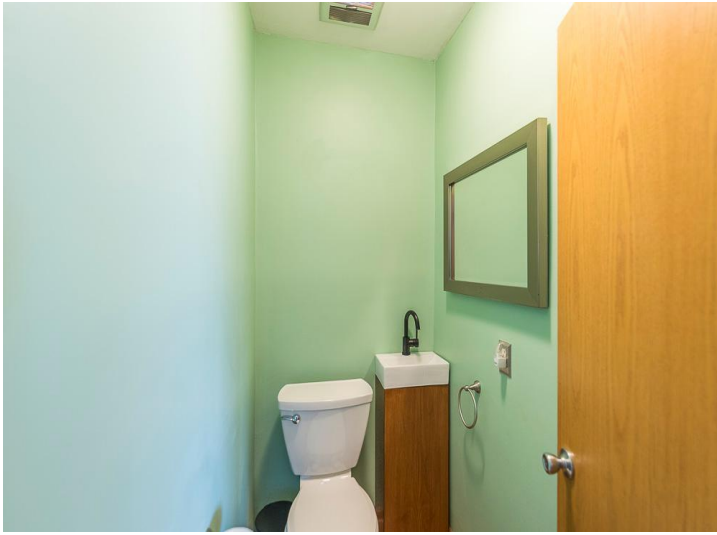
\$369,900
MLS 7088661 Lake Home
503 Bluff Avenue
Brainerd MN 56401



website: www.AffinityRealEstate.com | email: info@affinityrealestate.com | office: 218-237-3333 | fax:218-237-3377

Affinity
REAL ESTATE INC

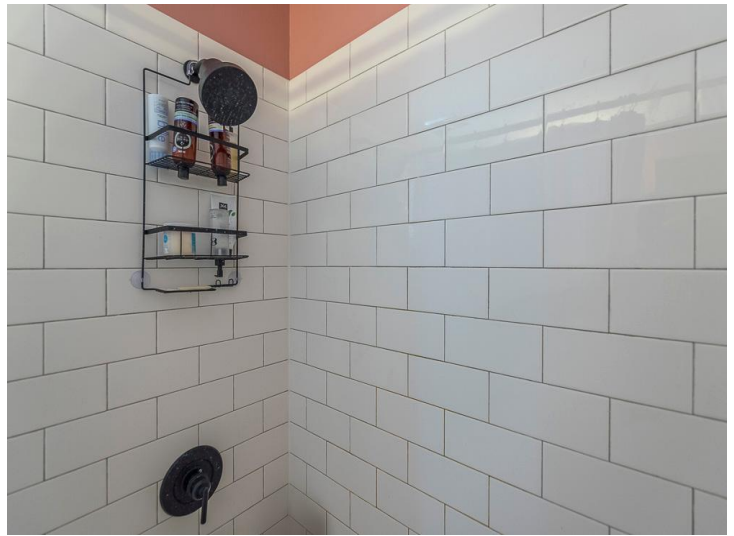
\$369,900
MLS 7088661 Lake Home
503 Bluff Avenue
Brainerd MN 56401



website: www.AffinityRealEstate.com | email: info@affinityrealestate.com | office: 218-237-3333 | fax:218-237-3377



\$369,900
MLS 7088661 Lake Home
503 Bluff Avenue
Brainerd MN 56401



website: www.AffinityRealEstate.com | email: info@affinityrealestate.com | office: 218-237-3333 | fax:218-237-3377



\$369,900
MLS 7088661 Lake Home
503 Bluff Avenue
Brainerd MN 56401



website: www.AffinityRealEstate.com | email: info@affinityrealestate.com | office: 218-237-3333 | fax:218-237-3377



\$369,900
MLS 7088661 Lake Home
503 Bluff Avenue
Brainerd MN 56401



website: www.AffinityRealEstate.com | email: info@affinityrealestate.com | office: 218-237-3333 | fax:218-237-3377



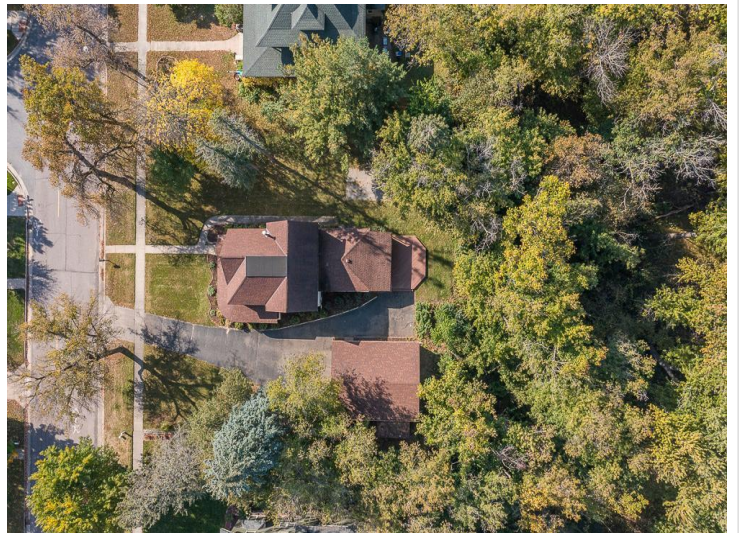
\$369,900
MLS 7088661 Lake Home
503 Bluff Avenue
Brainerd MN 56401



website: www.AffinityRealEstate.com | email: info@affinityrealestate.com | office: 218-237-3333 | fax:218-237-3377



\$369,900
MLS 7088661 Lake Home
503 Bluff Avenue
Brainerd MN 56401



website: www.AffinityRealEstate.com | email: info@affinityrealestate.com | office: 218-237-3333 | fax:218-237-3377

Affinity
REAL ESTATE INC

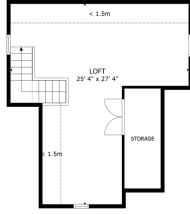
\$369,900
MLS 7088661 Lake Home
503 Bluff Avenue
Brainerd MN 56401



website: www.AffinityRealEstate.com | email: info@affinityrealestate.com | office: 218-237-3333 | fax:218-237-3377

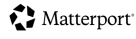


\$369,900
MLS 7088661 Lake Home
503 Bluff Avenue
Brainerd MN 56401



FLOOR 3

GROSS INTERNAL AREA:
 FLOOR 1 1,287 sq.ft. FLOOR 2 736 sq.ft. FLOOR 3 452 sq.ft.
 EXCLUDED AREA: RECKLED REARROOM 103 sq.ft.
 TOTAL: 2,455 sq.ft.
SIZES AND DIMENSIONS ARE APPROXIMATE, ACTUAL MAY VARY.



website: www.AffinityRealEstate.com | email: info@affinityrealestate.com | office: 218-237-3333 | fax:218-237-3377



\$369,900
 MLS 7088661 Lake Home
 503 Bluff Avenue
 Brainerd MN 56401