



MLS 7088761 Land

\$625,000

72.77 Acres
Raw Land

TBD US Highway 59
Elbow Lake MN 56531

Status: Pending

Description:

72.77 surveyed with approx. 70.59 tillable. Rented for the 2026 season. 93 CPI soil rating. Taxes TBD as this is a split from a larger parcel.

Additional Details:

Year Built	1905
Lot Acres	72.77
Lot Dimensions	1
School District	2342
Taxes	\$3,044
Taxes with Assessments	\$3,044
Tax Year	2026

Additional Features:

Driving Directions:

5.5 miles N of Elbow Lake



Listed By:
Whitetail Properties Real Estate

Affinity Real Estate Inc. participates in the Regional Multiple Listing Service of Minnesota, Inc Broker Reciprocity (sm) program, allowing us to display other broker's listings on our website. All properties are subject to prior sale, change or withdrawal.



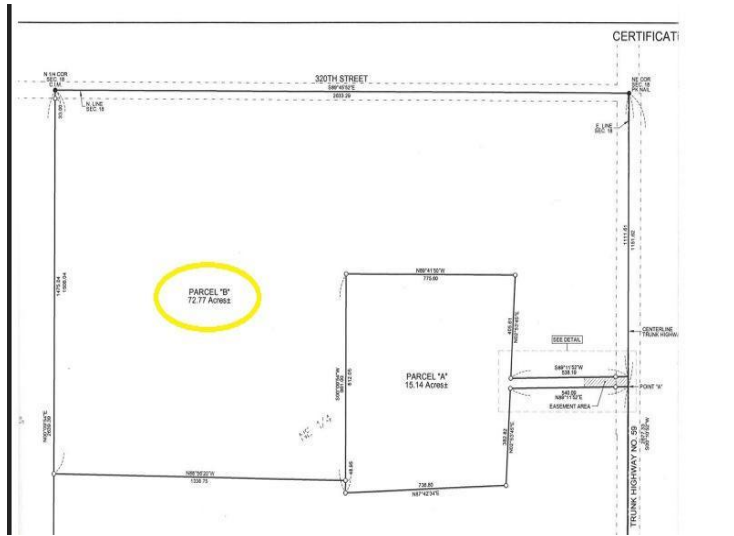
Call Affinity Real Estate

218-237-3333

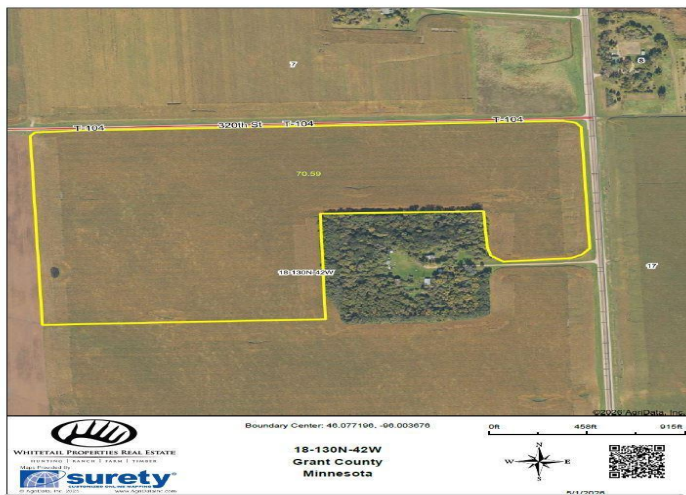
info@affinityrealestate.com



Affinity Real Estate - 600 Park Avenue South - Park Rapids MN 56470



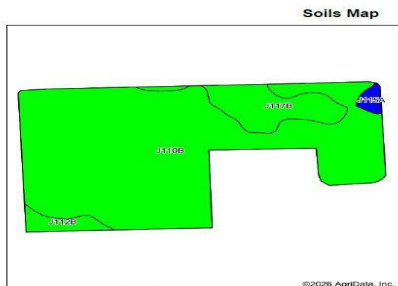
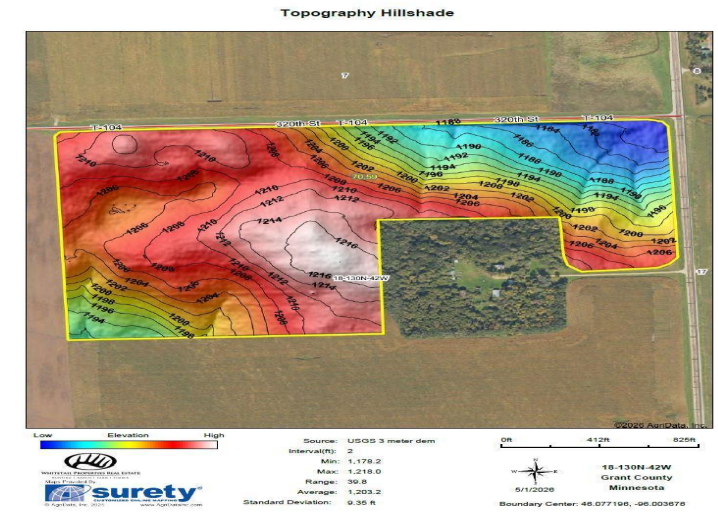
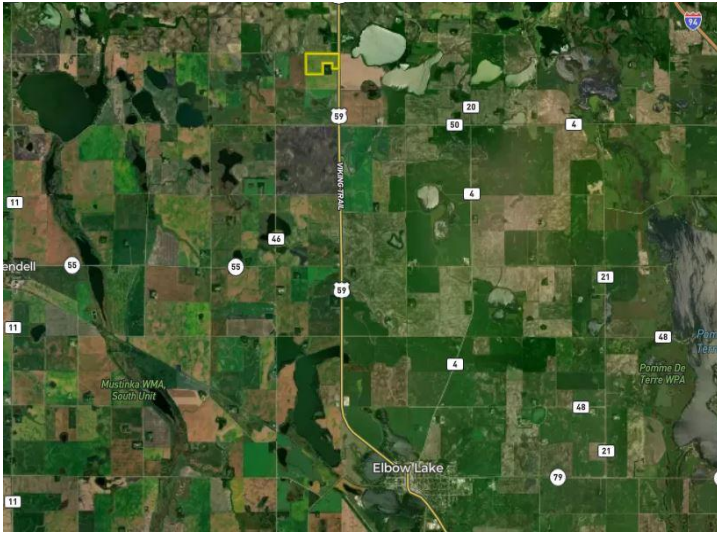
Aerial Map



website: www.AffinityRealEstate.com | email: info@affinityrealestate.com | office: 218-237-3333 | fax:218-237-3377



\$625,000
 MLS 7088761 Land
 TBD US Highway 59
 Elbow Lake MN 56531



Soils data provided by USDA and NRCS
 Area Symbol: MN051, Soil Area Version: 22

Code	Soil Description	Acres	Percent of field	PI Legend	Productivity Index
J110B	Aazobah-Formatale-Baton clay loams, 0 to 4 percent slopes	59.80	84.8%	93	93
J112B	Iskahn-Guam complex, 2 to 6 percent slopes	7.68	10.9%	99	99
J112B	Aazobah-Guam-Lakepark complex, 0 to 4 percent slopes	2.12	3.0%	93	93
J115A	Flois-Hamery complex, 0 to 2 percent slopes	0.92	1.3%	90	90
Weighted Average					93.6

website: www.AffinityRealEstate.com | email: info@affinityrealestate.com | office: 218-237-3333 | fax: 218-237-3377



\$625,000
 MLS 7088761 Land
 TBD US Highway 59
 Elbow Lake MN 56531