



MLS 7088888 Residential

**\$315,000**

1,296 sq ft  
2 bedrooms  
1 baths

2542 Otter Road  
Bemidji MN 56601

Status: Active

**Description:**

Welcome to 2542 Otter Road, a beautifully maintained country property offering privacy, space, and stunning natural views on approximately 8 acres. This charming home features nearly 1,300 square feet of comfortable living space, with 2 bedrooms and 1 bath, and is in excellent condition throughout. Home comes with gas in-floor heat for very good energy efficiency and free standing pellet stove.

The outstanding kitchen is a true highlight, featuring granite countertops, ample cabinetry, and plenty of workspace for cooking and entertaining. Total flow of home is meant for easy moving around. An attached heated double garage provides year-round convenience and comfort.

Outside, you'll find a secondary pole building that offers excellent storage, workshop space, or room for recreational equipment. The property overlooks a picturesque wetland, providing breathtaking views, abundant wildlife, and a peaceful natural setting that can be enjoyed in every season.

Whether you're seeking a full-time residence, a weekend getaway, or simply a place to enjoy country living, this well-cared-for property combines quality, functionality, and scenic beauty in one exceptional package.

**Additional Details:**

Year Built	2003
Lot Acres	8
Lot Dimensions	547x690
Garage Stalls	5
School District	31
Taxes	\$2,372
Taxes with Assessments	\$2,372
Tax Year	2026

**Additional Features:**

**Basement:** None **Fuel:** Electric, Pellet, Propane **Garage:** 5 **Heat:** Boiler, Hot Water, In-Floor Heating, Wood Stove **Sewer:** Private Sewer

**Conditioning:** Ductless Mini-Split

Listed By:  
Grimes Realty

Affinity Real Estate Inc participates in the Equal Housing Opportunity Listing Service of Minnesota, Inc Broker Reciprocity (sm) program, allowing us to display other broker's listings on our website. All properties are subject to prior sale, change or withdrawal.



**Call Affinity Real Estate**

**218-237-3333**

**info@affinityrealestate.com**



**Affinity Real Estate - 600 Park Avenue South - Park Rapids MN 56470**



website: [www.AffinityRealEstate.com](http://www.AffinityRealEstate.com) | email: [info@affinityrealestate.com](mailto:info@affinityrealestate.com) | office: 218-237-3333 | fax:218-237-3377

**Affinity**  
REAL ESTATE INC

**\$315,000**  
MLS 7088888 Residential  
2542 Otter Road  
Bemidji MN 56601



website: [www.AffinityRealEstate.com](http://www.AffinityRealEstate.com) | email: [info@affinityrealestate.com](mailto:info@affinityrealestate.com) | office: 218-237-3333 | fax: 218-237-3377

**Affinity**  
REAL ESTATE INC

**\$315,000**  
MLS 7088888 Residential  
2542 Otter Road  
Bemidji MN 56601



website: [www.AffinityRealEstate.com](http://www.AffinityRealEstate.com) | email: [info@affinityrealestate.com](mailto:info@affinityrealestate.com) | office: 218-237-3333 | fax: 218-237-3377

**Affinity**  
REAL ESTATE INC

**\$315,000**  
MLS 7088888 Residential  
2542 Otter Road  
Bemidji MN 56601



website: [www.AffinityRealEstate.com](http://www.AffinityRealEstate.com) | email: [info@affinityrealestate.com](mailto:info@affinityrealestate.com) | office: 218-237-3333 | fax:218-237-3377

**Affinity**  
REAL ESTATE INC

**\$315,000**  
MLS 7088888 Residential  
2542 Otter Road  
Bemidji MN 56601



website: [www.AffinityRealEstate.com](http://www.AffinityRealEstate.com) | email: [info@affinityrealestate.com](mailto:info@affinityrealestate.com) | office: 218-237-3333 | fax: 218-237-3377

**Affinity**  
REAL ESTATE INC

**\$315,000**  
MLS 7088888 Residential  
2542 Otter Road  
Bemidji MN 56601



website: [www.AffinityRealEstate.com](http://www.AffinityRealEstate.com) | email: [info@affinityrealestate.com](mailto:info@affinityrealestate.com) | office: 218-237-3333 | fax:218-237-3377

**Affinity**  
REAL ESTATE INC

**\$315,000**  
MLS 7088888 Residential  
2542 Otter Road  
Bemidji MN 56601



website: [www.AffinityRealEstate.com](http://www.AffinityRealEstate.com) | email: [info@affinityrealestate.com](mailto:info@affinityrealestate.com) | office: 218-237-3333 | fax:218-237-3377

**Affinity**  
REAL ESTATE INC

**\$315,000**  
MLS 7088888 Residential  
2542 Otter Road  
Bemidji MN 56601



website: [www.AffinityRealEstate.com](http://www.AffinityRealEstate.com) | email: [info@affinityrealestate.com](mailto:info@affinityrealestate.com) | office: 218-237-3333 | fax:218-237-3377



**\$315,000**  
MLS 7088888 Residential  
2542 Otter Road  
Bemidji MN 56601



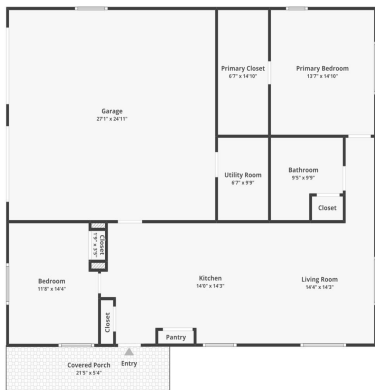
website: [www.AffinityRealEstate.com](http://www.AffinityRealEstate.com) | email: [info@affinityrealestate.com](mailto:info@affinityrealestate.com) | office: 218-237-3333 | fax:218-237-3377



**\$315,000**  
MLS 7088888 Residential  
2542 Otter Road  
Bemidji MN 56601



2542 Otter Rd NE, Bemidji, MN 56601



Floor 1

Floor plans are for informational purposes only and not for construction or design use. Measurements are approximations, and square footage may include finished and unfinished areas.

website: [www.AffinityRealEstate.com](http://www.AffinityRealEstate.com) | email: [info@affinityrealestate.com](mailto:info@affinityrealestate.com) | office: 218-237-3333 | fax: 218-237-3377



**\$315,000**  
 MLS 7088888 Residential  
 2542 Otter Road  
 Bemidji MN 56601