



MLS 7089078 Residential

\$310,000

2,400 sq ft
3 bedrooms
2 baths

812 Spruce Grove Lane
Bemidji MN 56601

Status: Active

Description:

Here's your chance to live at the end of a cul-de-sac in a well established neighborhood in Northern Township. 3 bedroom home with walk out. Remodeled kitchen, spacious family room, large deck, fire pit, and outdoor wood fired sauna. Beautiful, quiet lot with mature trees and lots of character. Natural gas fireplace, outdoor wood boiler!

Additional Details:

Year Built	1978
Lot Acres	1.06
Lot Dimensions	180x245
Garage Stalls	2
School District	31
Taxes	\$2,402
Taxes with Assessments	\$2,402
Tax Year	2026

Additional Features:

Basement: Block, Finished, Full, Walkout **Fuel:** Electric, Natural Gas, Wood **Garage:** 2 **Heat:** Baseboard, Boiler, Forced Air, Fireplace(s), Hot Water, Outdoor Boiler, Wood Stove **Sewer:** Private Sewer, Tank with Drainage Field **Water:** 4-Inch Submersible, Drilled **Air Conditioning:** Wall Unit(s)

Driving Directions:

North on Irvine Ave, past Northern School, left on Spruce Grove Ln, home at the end of the cul de sac.



Listed By:
Century 21 Dickinson

Affinity Real Estate Inc. participates in the Regional Multiple Listing Service of Minnesota, Inc Broker Reciprocity (sm) program, allowing us to display other broker's listings on our website. All properties are subject to prior sale, change or withdrawal.



Call Affinity Real Estate

218-237-3333

info@affinityrealestate.com



Affinity Real Estate - 600 Park Avenue South - Park Rapids MN 56470



website: www.AffinityRealEstate.com | email: info@affinityrealestate.com | office: 218-237-3333 | fax:218-237-3377

Affinity
REAL ESTATE INC

\$310,000
MLS 7089078 Residential
812 Spruce Grove Lane
Bemidji MN 56601



website: www.AffinityRealEstate.com | email: info@affinityrealestate.com | office: 218-237-3333 | fax: 218-237-3377

Affinity
REAL ESTATE INC

\$310,000
MLS 7089078 Residential
812 Spruce Grove Lane
Bemidji MN 56601



website: www.AffinityRealEstate.com | email: info@affinityrealestate.com | office: 218-237-3333 | fax:218-237-3377

Affinity
REAL ESTATE INC

\$310,000
MLS 7089078 Residential
812 Spruce Grove Lane
Bemidji MN 56601



website: www.AffinityRealEstate.com | email: info@affinityrealestate.com | office: 218-237-3333 | fax:218-237-3377

Affinity
REAL ESTATE INC

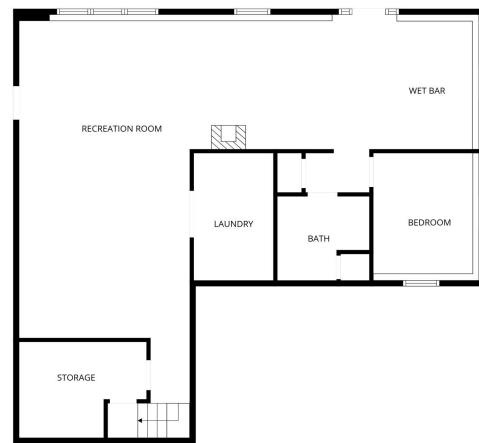
\$310,000
MLS 7089078 Residential
812 Spruce Grove Lane
Bemidji MN 56601



website: www.AffinityRealEstate.com | email: info@affinityrealestate.com | office: 218-237-3333 | fax: 218-237-3377

Affinity
REAL ESTATE INC

\$310,000
MLS 7089078 Residential
812 Spruce Grove Lane
Bemidji MN 56601



website: www.AffinityRealEstate.com | email: info@affinityrealestate.com | office: 218-237-3333 | fax: 218-237-3377



\$310,000
 MLS 7089078 Residential
 812 Spruce Grove Lane
 Bemidji MN 56601



FLOOR PLAN CREATED BY CUBICASA APP. MEASUREMENTS DEEMED HIGHLY RELIABLE BUT NOT GUARANTEED.



1st floor



2nd floor

FLOOR PLAN CREATED BY CUBICASA APP. MEASUREMENTS DEEMED HIGHLY RELIABLE BUT NOT GUARANTEED.

website: www.AffinityRealEstate.com | email: info@affinityrealestate.com | office: 218-237-3333 | fax: 218-237-3377



\$310,000
 MLS 7089078 Residential
 812 Spruce Grove Lane
 Bemidji MN 56601