



MLS 7089335 Commercial

\$219,000

122 Main Avenue
Park Rapids MN 56470

Status: Active

Description:

Investment Opportunity with this Park Rapids unique and nostalgic commercial property on the corner of Main Street and 2nd Ave, which boasts 3,450 sq feet of rental space and great parking. As you enter the main level you will feel the care and beauty that this building possesses. Rental history has been great with retail on the main level, bathroom facilities and lower-level storage. There are 2 apartments which are rented and have a great history for occupancy. The main floor bedroom apartment has 2 bedrooms and separate entry and there is an updated 4 bedroom on the upper level. Both of the apartments have laundry facilities and designated parking. Income producing and so much potential. Call today for your private showing.

Additional Details:

Year Built	1910
Lot Acres	0.08
Lot Dimensions	25x46
School District	309
Taxes	\$2,963
Taxes with Assessments	\$3,760
Tax Year	2026

Additional Features:

Fuel: Electric, Natural Gas **Heat:** Baseboard, Boiler, Ductless Mini-Split, Hot Water, Zoned

Driving Directions:

From 34/71 in Park Rapids go West on 34 1 Block to a left on to Main Street. The property is on the first block on the left, at the intersection of Main and Second Street.



Listed By:
Affinity Real Estate Inc.

Affinity Real Estate Inc. participates in the Regional Multiple Listing Service of Minnesota, Inc Broker Reciprocity (sm) program, allowing us to display other broker's listings on our website. All properties are subject to prior sale, change or withdrawal.



Call Affinity Real Estate

218-237-3333

info@affinityrealestate.com



Affinity Real Estate - 600 Park Avenue South - Park Rapids MN 56470



website: www.AffinityRealEstate.com | email: info@affinityrealestate.com | office: 218-237-3333 | fax:218-237-3377



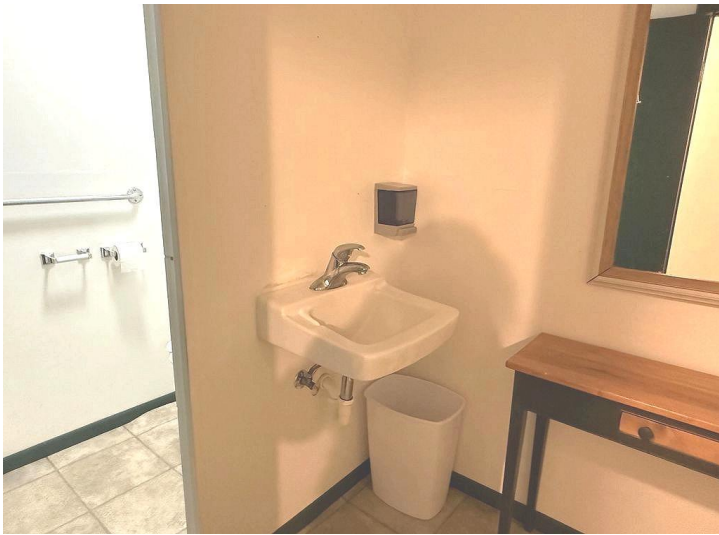
\$219,000
MLS 7089335 Commercial
122 Main Avenue
Park Rapids MN 56470



website: www.AffinityRealEstate.com | email: info@affinityrealestate.com | office: 218-237-3333 | fax:218-237-3377



\$219,000
MLS 7089335 Commercial
122 Main Avenue
Park Rapids MN 56470



website: www.AffinityRealEstate.com | email: info@affinityrealestate.com | office: 218-237-3333 | fax:218-237-3377



\$219,000
MLS 7089335 Commercial
122 Main Avenue
Park Rapids MN 56470



website: www.AffinityRealEstate.com | email: info@affinityrealestate.com | office: 218-237-3333 | fax:218-237-3377

Affinity
REAL ESTATE INC

\$219,000
MLS 7089335 Commercial
122 Main Avenue
Park Rapids MN 56470



website: www.AffinityRealEstate.com | email: info@affinityrealestate.com | office: 218-237-3333 | fax:218-237-3377



\$219,000
MLS 7089335 Commercial
122 Main Avenue
Park Rapids MN 56470