



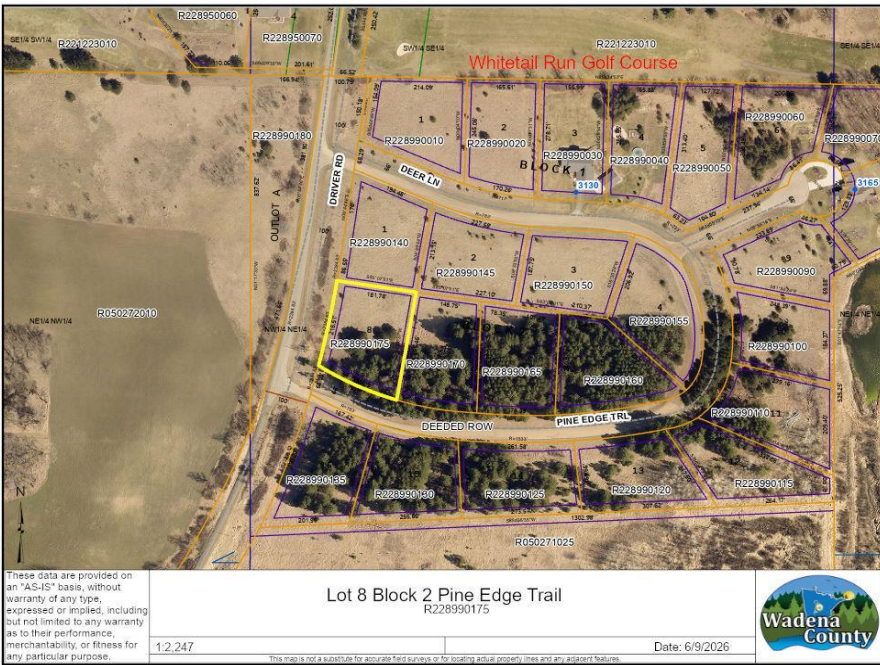
MLS 7089401 Land

**\$20,000**

0.99 Acres  
Raw Land

TBD Lot 8 Block 2 Pine Edge Trail  
Wadena MN 56482

Status: Active



**Description:**

Nice 1 acre level lot ready for your new home! Great location, close to Leaf River Recreational Trail and Whitetail Run Golf Course ~ which was voted the best public course in Minnesota! Build to suit options and more lots available.

**Additional Details:**

Lot Acres	0.99
Lot Dimensions	194x203x181x255
School District	2155
Taxes	\$248
Taxes with Assessments	\$248
Tax Year	2026

**Additional Features:**

**Driving Directions:**

From Wadena, go North on #71, to right on Leaf River Road, to right on Driver Road, to left on Pine Edge Trail, first lot on the left, lot is on the corner of Driver Road and Pine Edge Trail. Lot 8 Block 2.



Listed By:  
Edina Realty, Inc.

Affinity Real Estate Inc. participates in the Regional Multiple Listing Service of Minnesota, Inc Broker Reciprocity (sm) program, allowing us to display other broker's listings on our website. All properties are subject to prior sale, change or withdrawal.



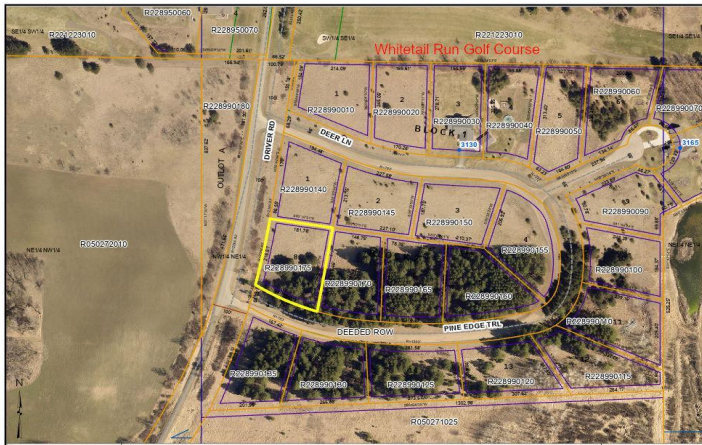
Call Affinity Real Estate

**218-237-3333**

[info@affinityrealestate.com](mailto:info@affinityrealestate.com)



Affinity Real Estate - 600 Park Avenue South - Park Rapids MN 56470



These data are provided on an "AS-IS" basis, without warranty of any type, expressed or implied, including but not limited to any warranty as to their performance, merchantability, or fitness for any particular purpose.

1.2.247

Wadena County

Date: 6/9/2026

Lot 8 Block 2 Pine Edge Trail  
R228990175



website: [www.AffinityRealEstate.com](http://www.AffinityRealEstate.com) | email: [info@affinityrealestate.com](mailto:info@affinityrealestate.com) | office: 218-237-3333 | fax:218-237-3377

**Affinity**  
REAL ESTATE INC

**\$20,000**  
MLS 7089401 Land  
TBD Lot 8 Block 2 Pine Edge  
Trail  
Wadena MN 56482