



MLS 7089418 Land

\$375,000

0.11 Acres

Other

7826 unit 9 County Rd 42
Alexandria MN 56308

Status: Active

Description:

New storage building in a prime location. Access off of a County Highway, easy in and out for any season. 2 overhead doors both 14' tall, and southeasterly facing, let the winter sun do the work to get rid of any ice or snow buildup. Association maintained lawn and snow removal. The 48x80 building will be completely insulated, steel lined and heated by in-floor heat with a natural gas boiler. The unit will have a kitchen, bathroom and loft areas. Units are connected to the ALASD sanitary sewer system and natural gas. Scheduled a showing today, only 9 units will be built in this development.

Additional Details:

Lot Acres	0.11
Lot Dimensions	54x86
School District	206
Taxes	\$1,932
Taxes with Assessments	(unreported)
Tax Year	2026

Additional Features:

Driving Directions:

West of Carlos corners to address 7826
Unit 9



Listed By:
Counselor Realty Inc of Alex

Affinity Real Estate Inc. participates in the Regional Multiple Listing Service of Minnesota, Inc Broker Reciprocity (sm) program, allowing us to display other broker's listings on our website. All properties are subject to prior sale, change or withdrawal.



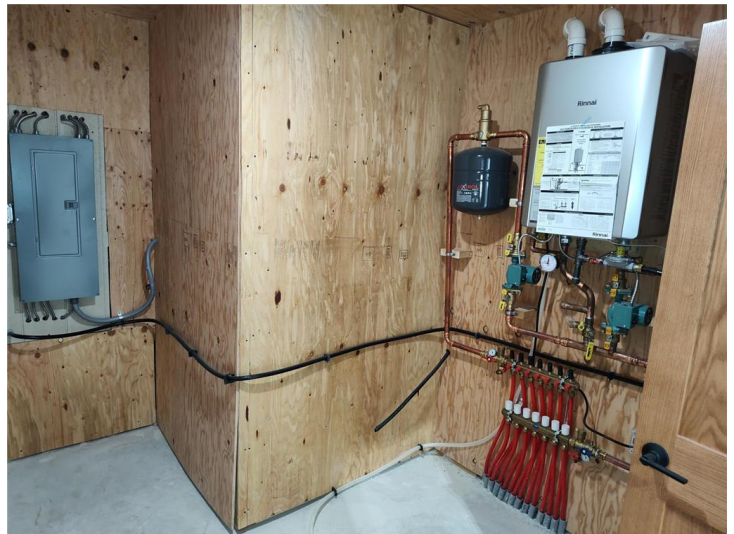
Call Affinity Real Estate

218-237-3333

info@affinityrealestate.com



Affinity Real Estate - 600 Park Avenue South - Park Rapids MN 56470



website: www.AffinityRealEstate.com | email: info@affinityrealestate.com | office: 218-237-3333 | fax:218-237-3377

Affinity
REAL ESTATE INC

\$375,000
MLS 7089418 Land
7826 unit 9 County Rd 42
Alexandria MN 56308