



MLS 7089447 Commercial

**\$225,000**

200 Golf Course Road  
Baxter MN 56425

Status: Active



**Description:**

Prime .64 acre commercial lot located on Golf Course Drive just off Highway 371/210 interchange in Baxter. Former MNDOT Radio tower site offering excellent visibility and access. Adjacent to Kohl's and Fleet Farm in one of the area's busiest commercial corridors. Ideal for retail, office, service, or other commercial development.

One of the sellers is a licensed Minnesota real estate agent.

**Additional Details:**

Year Built	2001
Lot Acres	0.64
Lot Dimensions	161.05 x 177.91 x 161.07 x 150.04
School District	181
Taxes	\$25
Taxes with Assessments	\$25
Tax Year	2026

**Additional Features:**

**Fuel:** Other **Heat:** None **Sewer:** None **Water:** None

**Driving Directions:**

Heading west from Brainerd on State Highway 210, take a left on Golf Course Drive. Turn left onto driveway across from Kohl's



Listed By:  
Coldwell Banker Crown Realtors

Affinity Real Estate Inc. participates in the Regional Multiple Listing Service of Minnesota, Inc Broker Reciprocity (sm) program, allowing us to display other broker's listings on our website. All properties are subject to prior sale, change or withdrawal.



Call Affinity Real Estate

**218-237-3333**

[info@affinityrealestate.com](mailto:info@affinityrealestate.com)

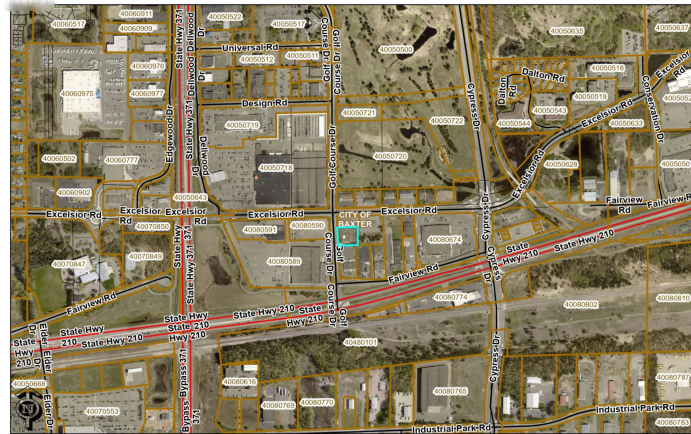


Affinity Real Estate - 600 Park Avenue South - Park Rapids MN 56470



These data are provided on an "AS-IS" basis, without warranty of any type, expressed or implied, including but not limited to any warranty as to their performance, merchantability, or fitness for any particular purpose.

Date: 6/8/2026 Time: 6:39 PM



These data are provided on an "AS-IS" basis, without warranty of any type, expressed or implied, including but not limited to any warranty as to their performance, merchantability, or fitness for any particular purpose.

Date: 6/8/2026 Time: 6:37 PM



website: [www.AffinityRealEstate.com](http://www.AffinityRealEstate.com) | email: [info@affinityrealestate.com](mailto:info@affinityrealestate.com) | office: 218-237-3333 | fax: 218-237-3377



**\$225,000**  
 MLS 7089447 Commercial  
 200 Golf Course Road  
 Baxter MN 56425



website: [www.AffinityRealEstate.com](http://www.AffinityRealEstate.com) | email: [info@affinityrealestate.com](mailto:info@affinityrealestate.com) | office: 218-237-3333 | fax:218-237-3377



**\$225,000**  
MLS 7089447 Commercial  
200 Golf Course Road  
Baxter MN 56425