



MLS 7089551 Residential

\$379,900

2,680 sq ft
4 bedrooms
3 baths

31958 Green Scene Drive
Pequot Lakes MN 56472

Status: Active

Description:

Welcome to this spacious 4-bedroom, 3-bath home nestled on a beautiful 1-acre lot on Green Scene Road in Breezy Point. Designed for comfortable living and entertaining, this property features an ideal main-level layout with three bedrooms and convenient main-floor laundry.

Step inside to find an open and inviting living space highlighted by vaulted ceilings that create a bright, airy atmosphere. The functional floor plan offers plenty of room for family and guests, while the attached 3-stall garage provides ample storage for vehicles, toys, and outdoor equipment.

The finished lower level boasts brand-new flooring and an expansive family room, making it the perfect gathering space for game days, movie nights, or hosting friends and family. A fourth bedroom and additional living space offer flexibility for guests, a home office, or hobby room.

Enjoy the privacy that comes with a full acre of land, all while being conveniently located near Breezy Point's golf courses, lakes, dining, and year-round recreation. This well-maintained home combines space, comfort, and location—don't miss your opportunity to make it yours!

Additional Details:

Year Built	2003
Lot Acres	1
Lot Dimensions	100x332x181x302
Garage Stalls	3
School District	186
Taxes	\$3,030
Taxes with Assessments	\$3,030
Tax Year	2026

Additional Features:

Basement: Finished, Full, Walkout **Fuel:** Electric, Natural Gas **Garage:** 3 **Heat:** Forced Air **Sewer:** Private Sewer, Tank with Drainage Field
Water: Drilled, Well **Air Conditioning:** Central Air

Driving Directions:

From Breezy Point Resort Gates, go N on Cty Rd 11 to Bushman Road, turn Right, go 1/2 mile, turn Left (31958).



Listed By:
Coldwell Banker Realty

Affinity Real Estate Inc. participates in the Regional Multiple Listing Service of Minnesota, Inc Broker Reciprocity (sm) program, allowing us to display other broker's listings on our website. All properties are subject to prior sale, change or withdrawal.



Call Affinity Real Estate

218-237-3333

info@affinityrealestate.com



Affinity Real Estate - 600 Park Avenue South - Park Rapids MN 56470



website: www.AffinityRealEstate.com | email: info@affinityrealestate.com | office: 218-237-3333 | fax: 218-237-3377



\$379,900
MLS 7089551 Residential
31958 Green Scene Drive
Pequot Lakes MN 56472



website: www.AffinityRealEstate.com | email: info@affinityrealestate.com | office: 218-237-3333 | fax: 218-237-3377

Affinity
REAL ESTATE INC

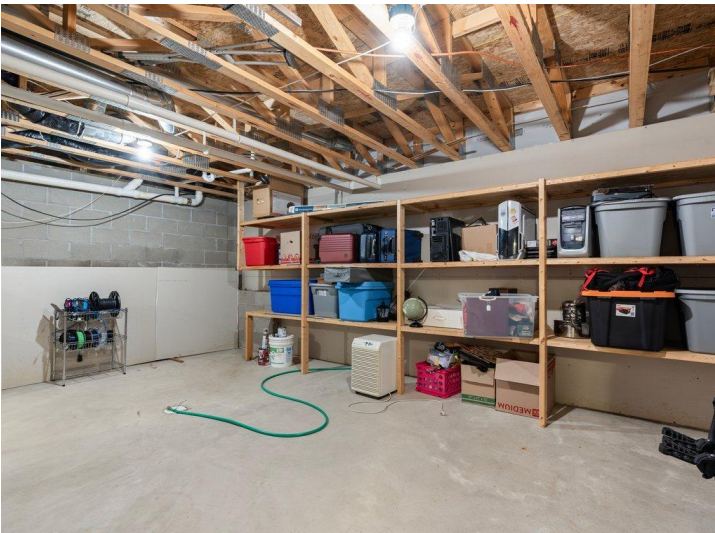
\$379,900
MLS 7089551 Residential
31958 Green Scene Drive
Pequot Lakes MN 56472



website: www.AffinityRealEstate.com | email: info@affinityrealestate.com | office: 218-237-3333 | fax:218-237-3377



\$379,900
MLS 7089551 Residential
31958 Green Scene Drive
Pequot Lakes MN 56472



website: www.AffinityRealEstate.com | email: info@affinityrealestate.com | office: 218-237-3333 | fax: 218-237-3377

Affinity
REAL ESTATE INC

\$379,900
MLS 7089551 Residential
31958 Green Scene Drive
Pequot Lakes MN 56472



website: www.AffinityRealEstate.com | email: info@affinityrealestate.com | office: 218-237-3333 | fax:218-237-3377

Affinity
REAL ESTATE INC

\$379,900
MLS 7089551 Residential
31958 Green Scene Drive
Pequot Lakes MN 56472