



MLS 7089575 Lake Home

**\$1,500,000**

2,753 sq ft  
4 bedrooms  
4 baths

24089 Fork Lane  
Merrifield MN 56465

Waterfront: Edward

Status: Active

**Description:**


This spectacular custom Nor-Son built Lake Edward home captures the very best of luxury up north living. Nestled on a private 1.6-acre lot with 100+ feet of pristine lakeshore, level elevation, and a hard sand beach, this property offers the perfect balance of peaceful seclusion and everyday convenience, ideally situated within 15–20 minutes of Nisswa, Crosslake, and Brainerd. Featuring beautifully landscaped grounds, mature trees, a lakeside outdoor fireplace, maintenance-free decking, and a scenic path leading to the water's edge create an inviting setting for relaxing evenings, entertaining guests, and making lifelong memories at the lake. Inside, the thoughtfully designed floor plan blends warmth and sophistication with hardwood floors, vaulted ceilings, a stunning stone fireplace, and a wall of lakeside windows that fill the home with natural light while showcasing breathtaking lake views and towering pines. The high-end chef's kitchen is built for gathering and entertaining, featuring Viking appliances, granite countertops, and a massive center island. The lakeside primary suite offers a private retreat complete with a walk-in closet and sliding doors access to the deck. Above the garage, you'll find a private guest living quarters. 456+ square feet featuring a bedroom and 3/4 bathroom, providing the ideal setup for visitors, extended stays, or a potential VRBO/income-producing opportunity. Spend your days fishing, paddleboarding, boating, waterskiing, and enjoying sunset cruises on one of the area's most desirable lakes. Whether you're searching for a year-round residence, luxury lake cabin, or investment opportunity, this remarkable Lake Edward property delivers the ultimate Minnesota lake lifestyle.

**Additional Details:**

Year Built	2013
Lot Acres	1.48
Lot Dimensions	100x590x100x525
Garage Stalls	2
School District	181
Taxes	\$5,131
Taxes with Assessments	\$5,342
Tax Year	2026

**Additional Features:**

**Fuel:** Natural Gas **Heat:** Forced Air, Fireplace(s)

 Listed By:  
Kurilla Real Estate LTD  
From Merrifield, go 1.3 miles to roundabout, take 1st exit onto CR-3  
Fork Ln. In 500 ft turn left and arrive at 24089 Fork Ln.  
Affinity Real Estate Inc. participates in the Regional Multiple Listing Service of Minnesota, Inc Broker Reciprocity (sm) program, allowing us to display other broker's listings on our website. All properties are subject to prior sale, change or withdrawal.



**Call Affinity Real Estate**

**218-237-3333**

**info@affinityrealestate.com**



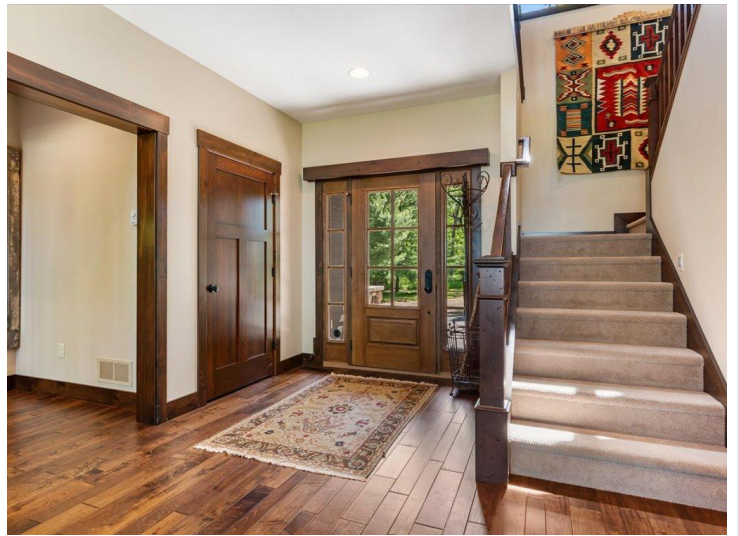
**Affinity Real Estate - 600 Park Avenue South - Park Rapids MN 56470**



website: [www.AffinityRealEstate.com](http://www.AffinityRealEstate.com) | email: [info@affinityrealestate.com](mailto:info@affinityrealestate.com) | office: 218-237-3333 | fax:218-237-3377



**\$1,500,000**  
MLS 7089575 Lake Home  
24089 Fork Lane  
Merrifield MN 56465



website: [www.AffinityRealEstate.com](http://www.AffinityRealEstate.com) | email: [info@affinityrealestate.com](mailto:info@affinityrealestate.com) | office: 218-237-3333 | fax: 218-237-3377

**Affinity**  
REAL ESTATE INC

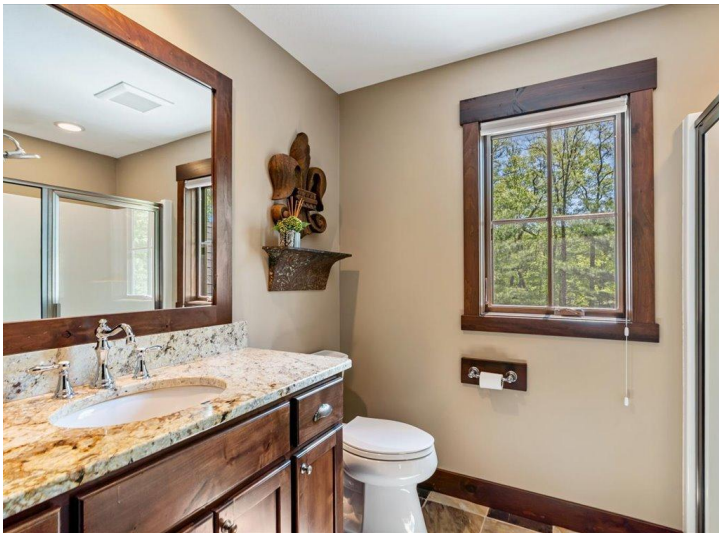
**\$1,500,000**  
MLS 7089575 Lake Home  
24089 Fork Lane  
Merrifield MN 56465



website: [www.AffinityRealEstate.com](http://www.AffinityRealEstate.com) | email: [info@affinityrealestate.com](mailto:info@affinityrealestate.com) | office: 218-237-3333 | fax: 218-237-3377

**Affinity**  
REAL ESTATE INC

**\$1,500,000**  
MLS 7089575 Lake Home  
24089 Fork Lane  
Merrifield MN 56465



website: [www.AffinityRealEstate.com](http://www.AffinityRealEstate.com) | email: [info@affinityrealestate.com](mailto:info@affinityrealestate.com) | office: 218-237-3333 | fax: 218-237-3377

**Affinity**  
REAL ESTATE INC

**\$1,500,000**  
MLS 7089575 Lake Home  
24089 Fork Lane  
Merrifield MN 56465



website: [www.AffinityRealEstate.com](http://www.AffinityRealEstate.com) | email: [info@affinityrealestate.com](mailto:info@affinityrealestate.com) | office: 218-237-3333 | fax: 218-237-3377

**Affinity**  
REAL ESTATE INC

**\$1,500,000**  
MLS 7089575 Lake Home  
24089 Fork Lane  
Merrifield MN 56465



website: [www.AffinityRealEstate.com](http://www.AffinityRealEstate.com) | email: [info@affinityrealestate.com](mailto:info@affinityrealestate.com) | office: 218-237-3333 | fax:218-237-3377

**Affinity**  
REAL ESTATE INC

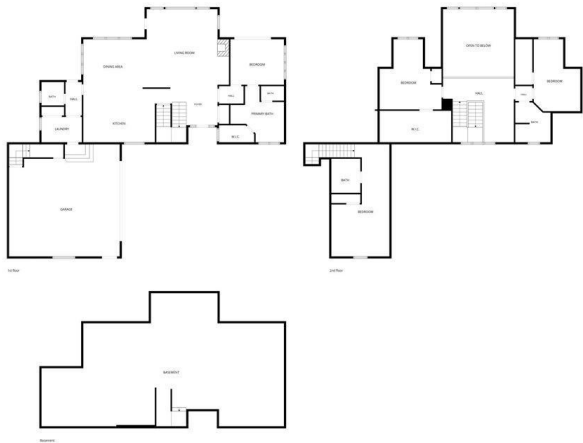
**\$1,500,000**  
MLS 7089575 Lake Home  
24089 Fork Lane  
Merrifield MN 56465



website: [www.AffinityRealEstate.com](http://www.AffinityRealEstate.com) | email: [info@affinityrealestate.com](mailto:info@affinityrealestate.com) | office: 218-237-3333 | fax:218-237-3377



**\$1,500,000**  
MLS 7089575 Lake Home  
24089 Fork Lane  
Merrifield MN 56465



FLOOR PLAN CREATED BY CURICASA APP. MEASUREMENTS DEEMED HIGHLY RELIABLE BUT NOT GUARANTEED.

website: [www.AffinityRealEstate.com](http://www.AffinityRealEstate.com) | email: [info@affinityrealestate.com](mailto:info@affinityrealestate.com) | office: 218-237-3333 | fax:218-237-3377



**\$1,500,000**  
MLS 7089575 Lake Home  
24089 Fork Lane  
Merrifield MN 56465