



MLS 7089578 Residential

\$775,000

4,318 sq ft
5 bedrooms
3 baths

10920 Pillsbury Circle
Nisswa MN 56468

Status: Coming Soon

Description:

The Retreat at Pillsbury Forest — Executive Craftsman-style home tucked away on 2.79 private acres adjoining Pillsbury State Forest. Set in a serene executive neighborhood, this custom-built home offers the perfect blend of wooded privacy, refined finishes, and access to the best of the Brainerd Lakes Area—just minutes from hiking trails, paved walking paths, championship golf, and near Madden’s and Cragun’s resorts.

Built in 2010, this luxury home features 5 bedrooms and 3 bathrooms, including a main-level primary ensuite designed for comfort and relaxation. The ensuite bathroom offers a spa-like setting with a large soaking tub with a peaceful view, dual-sink vanity, tiled walk-in shower, and walk-in closet.

The main living area is warm, open, and inviting, with the kitchen, dining, and gathering spaces flowing together for easy entertaining. A striking floor-to-ceiling stone, wood-burning fireplace anchors the room, while gorgeous reclaimed oak hardwood floors, custom knotty alder built-ins, and vaulted ceilings add timeless character. The gourmet kitchen offers stainless steel appliances, a copper sink, concrete countertops, generous storage, and a casual breakfast bar that connects beautifully to the dining area.

Just off the kitchen, the newly added 4-season sunroom is a true retreat in every season. Surrounded by windows and views galore, this peaceful space features dimmable lighting, a beautiful gas fireplace, a spectacular granite hearth, a custom wood mantel, and white shiplap walls that continue the cozy Up North feel.

The outdoor spaces are just as inviting, with thoughtfully designed landscaping that complements the natural wooded setting. Enjoy morning coffee, quiet evenings, or a warm welcome for guests from the covered front porch. Raised garden beds offer space for flowers, herbs, or fresh seasonal vegetables, while the outdoor fire pit creates the perfect place to gather under the stars, relax after a day on the trails, or enjoy peaceful evenings surrounded by nature.

With multiple living spaces, a home office, theater room, 24x24 insulated and heated attached garage, and an additional 24x24 detached garage, this property offers comfort, function, and flexibility. The Retreat at Pillsbury Forest is a rare opportunity to enjoy luxury living, natural beauty, and everyday convenience in one exceptional setting.

Additional Details:

Year Built 2010
Lot Acres 2.79
Lot Dimensions 271x655x537x174
Garage Stalls 4

School District	116
Listed By:	\$4,400
Broker Reciprocity	Pemberton RE
Taxes with Assessments	\$4,100
Year of Minnesota, Inc Broker Reciprocity (sm) program, allowing us to display other broker's listings on our website. All properties are subject to change or withdrawal.	2026

Additional Features:

Fuel: Natural Gas, Wood **Heat:** Forced Air, Fireplace(s), Zoned



Call Affinity Real Estate
218-237-3333
info@affinityrealestate.com



Affinity Real Estate - 600 Park Avenue South - Park Rapids MN 56470

Driving Directions:

From Brainerd, go north on HWY 371 to left on CR 77, about 9 miles to left on Beauty Lake Rd, to right into Pillsbury Circle... At the



website: www.AffinityRealEstate.com | email: info@affinityrealestate.com | office: 218-237-3333 | fax:218-237-3377



\$775,000
MLS 7089578 Residential
10920 Pillsbury Circle
Nisswa MN 56468



website: www.AffinityRealEstate.com | email: info@affinityrealestate.com | office: 218-237-3333 | fax: 218-237-3377



\$775,000
MLS 7089578 Residential
10920 Pillsbury Circle
Nisswa MN 56468



website: www.AffinityRealEstate.com | email: info@affinityrealestate.com | office: 218-237-3333 | fax:218-237-3377



\$775,000
MLS 7089578 Residential
10920 Pillsbury Circle
Nisswa MN 56468



website: www.AffinityRealEstate.com | email: info@affinityrealestate.com | office: 218-237-3333 | fax:218-237-3377



\$775,000
MLS 7089578 Residential
10920 Pillsbury Circle
Nisswa MN 56468



website: www.AffinityRealEstate.com | email: info@affinityrealestate.com | office: 218-237-3333 | fax:218-237-3377



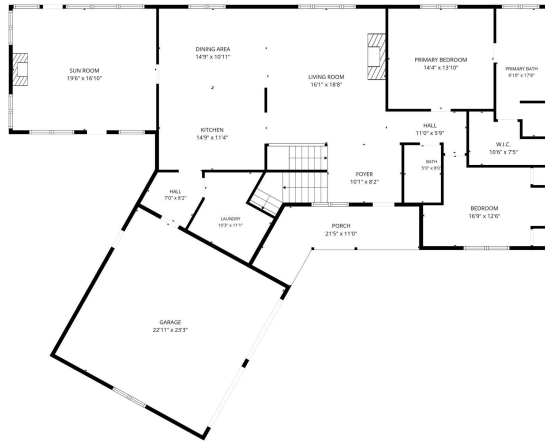
\$775,000
MLS 7089578 Residential
10920 Pillsbury Circle
Nisswa MN 56468



website: www.AffinityRealEstate.com | email: info@affinityrealestate.com | office: 218-237-3333 | fax:218-237-3377



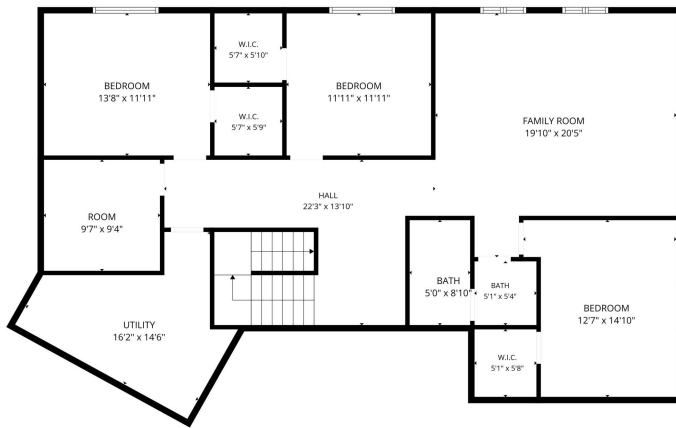
\$775,000
MLS 7089578 Residential
10920 Pillsbury Circle
Nisswa MN 56468



FLOOR PLAN CREATED BY CUBICASA APP. MEASUREMENTS DEEMED HIGHLY RELIABLE BUT NOT GUARANTEED.



FLOOR PLAN CREATED BY CUBICASA APP. MEASUREMENTS DEEMED HIGHLY RELIABLE BUT NOT GUARANTEED.



FLOOR PLAN CREATED BY CUBICASA APP. MEASUREMENTS DEEMED HIGHLY RELIABLE BUT NOT GUARANTEED.

website: www.AffinityRealEstate.com | email: info@affinityrealestate.com | office: 218-237-3333 | fax: 218-237-3377



\$775,000
 MLS 7089578 Residential
 10920 Pillsbury Circle
 Nisswa MN 56468