



MLS 7089740 Lake Home

\$449,000

1,372 sq ft
2 bedrooms
2 baths

38481 County Highway 41
Dent MN 56528

Waterfront: Star

Status: Active

Description:

Breathtaking view and great deck on Star Lake. Several outbuildings that could be storage or even guest cabins with some imagination. Some of the best fishing in Minnesota and not too far from the Minneapolis or Fargo Metro areas!

Additional Details:

Year Built	1957
Lot Acres	0.868
Lot Dimensions	231x75x254x250
Garage Stalls	2
School District	548
Taxes	\$1,197
Taxes with Assessments	\$1,197
Tax Year	2024

Additional Features:

Basement: Unfinished **Fuel:** Natural Gas **Garage:** 2 **Heat:** Forced Air **Sewer:** Septic System Compliant - Yes **Water:** Well **Air Conditioning:** Central Air

Driving Directions:

From Dent take highway 108 West towards Pelican Rapids. take a left onto county highway 41. House will be on your left after bridge.



Listed By:
Boll Realty

Affinity Real Estate Inc. participates in the Regional Multiple Listing Service of Minnesota, Inc Broker Reciprocity (sm) program, allowing us to display other broker's listings on our website. All properties are subject to prior sale, change or withdrawal.



Call Affinity Real Estate

218-237-3333

info@affinityrealestate.com



Affinity Real Estate - 600 Park Avenue South - Park Rapids MN 56470



website: www.AffinityRealEstate.com | email: info@affinityrealestate.com | office: 218-237-3333 | fax:218-237-3377



\$449,000
MLS 7089740 Lake Home
38481 County Highway 41
Dent MN 56528



website: www.AffinityRealEstate.com | email: info@affinityrealestate.com | office: 218-237-3333 | fax:218-237-3377

Affinity
REAL ESTATE INC

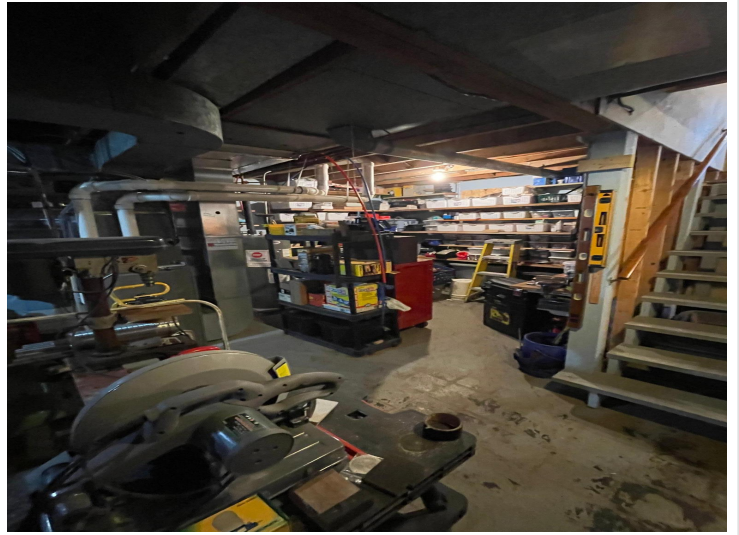
\$449,000
MLS 7089740 Lake Home
38481 County Highway 41
Dent MN 56528



website: www.AffinityRealEstate.com | email: info@affinityrealestate.com | office: 218-237-3333 | fax:218-237-3377



\$449,000
MLS 7089740 Lake Home
38481 County Highway 41
Dent MN 56528



website: www.AffinityRealEstate.com | email: info@affinityrealestate.com | office: 218-237-3333 | fax:218-237-3377

Affinity
REAL ESTATE INC

\$449,000
MLS 7089740 Lake Home
38481 County Highway 41
Dent MN 56528



website: www.AffinityRealEstate.com | email: info@affinityrealestate.com | office: 218-237-3333 | fax:218-237-3377

Affinity
REAL ESTATE INC

\$449,000
MLS 7089740 Lake Home
38481 County Highway 41
Dent MN 56528



website: www.AffinityRealEstate.com | email: info@affinityrealestate.com | office: 218-237-3333 | fax:218-237-3377



\$449,000
MLS 7089740 Lake Home
38481 County Highway 41
Dent MN 56528



website: www.AffinityRealEstate.com | email: info@affinityrealestate.com | office: 218-237-3333 | fax:218-237-3377



\$449,000
MLS 7089740 Lake Home
38481 County Highway 41
Dent MN 56528



website: www.AffinityRealEstate.com | email: info@affinityrealestate.com | office: 218-237-3333 | fax:218-237-3377



\$449,000
MLS 7089740 Lake Home
38481 County Highway 41
Dent MN 56528



website: www.AffinityRealEstate.com | email: info@affinityrealestate.com | office: 218-237-3333 | fax:218-237-3377



\$449,000
MLS 7089740 Lake Home
38481 County Highway 41
Dent MN 56528



website: www.AffinityRealEstate.com | email: info@affinityrealestate.com | office: 218-237-3333 | fax:218-237-3377



\$449,000
MLS 7089740 Lake Home
38481 County Highway 41
Dent MN 56528



website: www.AffinityRealEstate.com | email: info@affinityrealestate.com | office: 218-237-3333 | fax:218-237-3377



\$449,000
MLS 7089740 Lake Home
38481 County Highway 41
Dent MN 56528



website: www.AffinityRealEstate.com | email: info@affinityrealestate.com | office: 218-237-3333 | fax:218-237-3377

Affinity
REAL ESTATE INC

\$449,000
MLS 7089740 Lake Home
38481 County Highway 41
Dent MN 56528



website: www.AffinityRealEstate.com | email: info@affinityrealestate.com | office: 218-237-3333 | fax:218-237-3377

Affinity
REAL ESTATE INC

\$449,000
MLS 7089740 Lake Home
38481 County Highway 41
Dent MN 56528