

Douglas County, MN

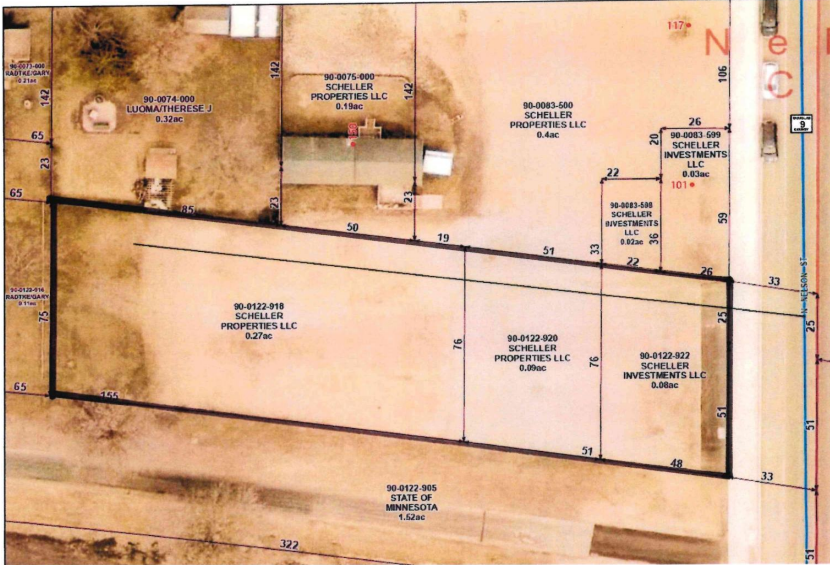


MLS 7089806 Commercial

\$65,000

XXXX Nelson Street
Nelson MN 56355

Status: Active



Description:

Exceptional development opportunity in the peaceful City of Nelson, conveniently located just 5 minutes from both Alexandria and Osakis along the Central Lakes Bike Trail. This versatile commercial lot offers outstanding potential for a wide range of uses, including storage units, townhomes, apartments, restaurants, pubs, retail businesses, repair shops, professional offices, recreational ventures, and more!
Bring your vision and explore the possibilities. The City of Nelson regulates this and would be more than welcome to hear your ideas and work with you and your plans.

This parcel provides ample space to bring your plans to life, city sewer is available, ALP electric service, natural gas infrastructure.. Additional adjoining land is available .44 AC, MLS # 7084366, expanding development opportunities along the Central Lakes Trail.

The City of Nelson recently completed significant infrastructure improvements, including new paved streets, sidewalks, and storm drainage systems in 2024, further enhancing the area's appeal and accessibility. Bordering the Central Lakes Trail, this location benefits from year-round traffic from cyclists, snowmobilers, and outdoor enthusiasts.

Don't miss this rare opportunity to invest in a revitalized and strategically located commercial property!

Additional Details:

Year Built	1900
Lot Acres	0.09
Lot Dimensions	76x253x75x14
School District	206
Taxes	\$234
Taxes with Assessments	\$234
Tax Year	2026

Additional Features:

Fuel: Natural Gas **Heat:** None

Listed By:
Century 21 First Realty, Inc.
ad east on County Road 82 to the Nelson corner
of the Central Lakes Trail, in the Regional Multiple Listing
Service of Minnesota, Inc Broker Reciprocity (sm) program, allowing
us to display other broker's listings on our website. All properties are
subject to prior sale, change or withdrawal.



Call Affinity Real Estate

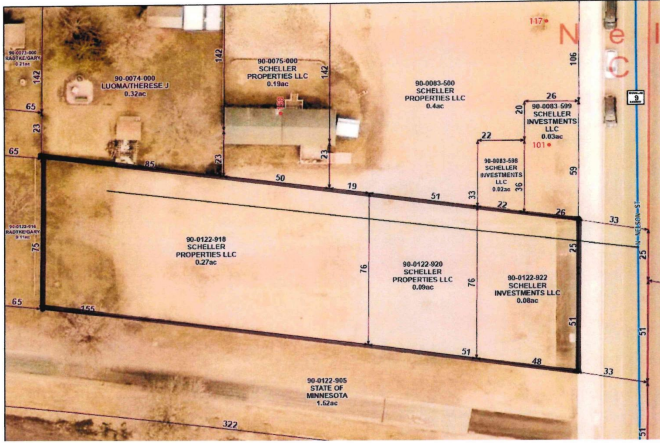
218-237-3333

info@affinityrealestate.com



Affinity Real Estate - 600 Park Avenue South - Park Rapids MN 56470

Douglas County, MN ↑



website: www.AffinityRealEstate.com | email: info@affinityrealestate.com | office: 218-237-3333 | fax: 218-237-3377

Affinity
REAL ESTATE INC

\$65,000
MLS 7089806 Commercial
XXXX Nelson Street
Nelson MN 56355



website: www.AffinityRealEstate.com | email: info@affinityrealestate.com | office: 218-237-3333 | fax:218-237-3377



\$65,000
MLS 7089806 Commercial
XXXX Nelson Street
Nelson MN 56355