



MLS 7089840 Residential

\$237,000

1,942 sq ft
4 bedrooms
2 baths

2319 Birchmont Drive
Bemidji MN 56601

Status: Active

Description:

2319 Birchmont Dr NE – Classic Home with Lake & Park Views

Location, location, location! This classic 4-bedroom, 2-bath story-and-a-half home, sits on a large wooded corner lot directly across from Lake Bemidji and beautiful Cameron Park. Enjoy immediate access to scenic bike trails right out your door and a highly walkable setting in one of the area’s most desirable neighborhoods. Full of character and rich history, this well-maintained home offers timeless charm with spacious living areas.

Additional features include a detached garage, a concrete driveway, and a wonderful yard—perfect for relaxing or entertaining. Conveniently close to local amenities, it’s an ideal blend of comfort, setting, and lifestyle.

The home currently holds a rental license with the City of Bemidji, with leases in place through May 31, 2027.

Additional Details:

Year Built	1922
Lot Acres	0.382
Lot Dimensions	97 x 165
Garage Stalls	2
School District	31
Taxes	\$2,820
Taxes with Assessments	\$2,820
Tax Year	2026

Additional Features:

Basement: Egress Window(s), Finished **Fuel:** Natural Gas **Garage:** 2 **Heat:** Forced Air **Sewer:** City Sewer/Connected, City Sewer - In Street
Water: City Water/Connected, City Water - In Street **Air Conditioning:** None

Driving Directions:

Right across from Cameron Park--Very close to everything



Listed By:
Edina Realty, Inc.

Affinity Real Estate Inc. participates in the Regional Multiple Listing Service of Minnesota, Inc Broker Reciprocity (sm) program, allowing us to display other broker’s listings on our website. All properties are subject to prior sale, change or withdrawal.



Call Affinity Real Estate

218-237-3333

info@affinityrealestate.com



Affinity Real Estate - 600 Park Avenue South - Park Rapids MN 56470



website: www.AffinityRealEstate.com | email: info@affinityrealestate.com | office: 218-237-3333 | fax: 218-237-3377

Affinity
REAL ESTATE INC

\$237,000
MLS 7089840 Residential
2319 Birchmont Drive
Bemidji MN 56601



website: www.AffinityRealEstate.com | email: info@affinityrealestate.com | office: 218-237-3333 | fax:218-237-3377



\$237,000
MLS 7089840 Residential
2319 Birchmont Drive
Bemidji MN 56601



website: www.AffinityRealEstate.com | email: info@affinityrealestate.com | office: 218-237-3333 | fax:218-237-3377



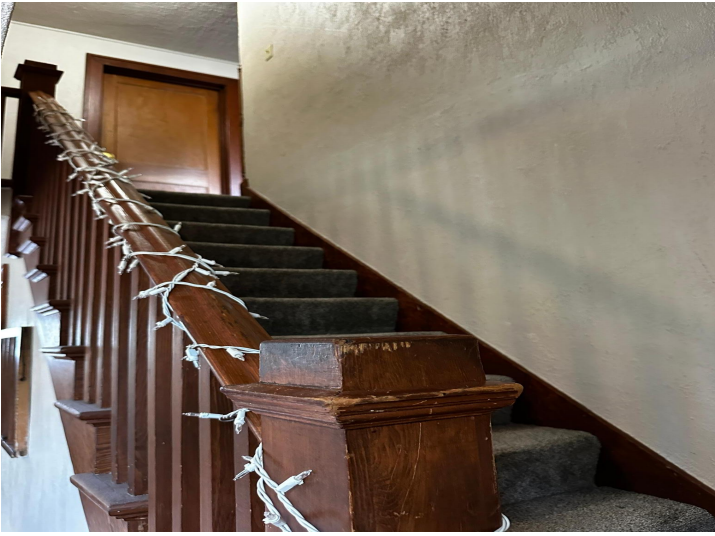
\$237,000
MLS 7089840 Residential
2319 Birchmont Drive
Bemidji MN 56601



website: www.AffinityRealEstate.com | email: info@affinityrealestate.com | office: 218-237-3333 | fax:218-237-3377



\$237,000
MLS 7089840 Residential
2319 Birchmont Drive
Bemidji MN 56601



website: www.AffinityRealEstate.com | email: info@affinityrealestate.com | office: 218-237-3333 | fax:218-237-3377



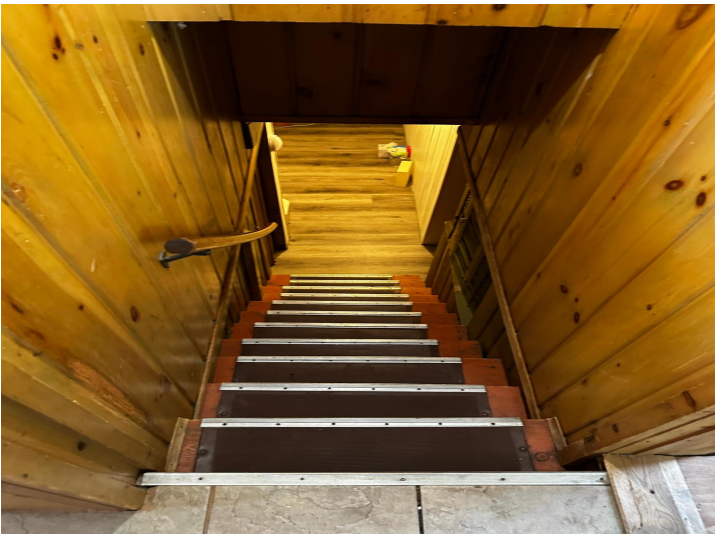
\$237,000
MLS 7089840 Residential
2319 Birchmont Drive
Bemidji MN 56601



website: www.AffinityRealEstate.com | email: info@affinityrealestate.com | office: 218-237-3333 | fax:218-237-3377



\$237,000
MLS 7089840 Residential
2319 Birchmont Drive
Bemidji MN 56601



website: www.AffinityRealEstate.com | email: info@affinityrealestate.com | office: 218-237-3333 | fax: 218-237-3377

Affinity
REAL ESTATE INC

\$237,000
MLS 7089840 Residential
2319 Birchmont Drive
Bemidji MN 56601