



MLS 7090173 Lake Home

\$875,000

1,290 sq ft
2 bedrooms
2 baths

37598 2nd Star Isle
Dent MN 56528

Waterfront: Star

Status: Active

Description:

Own an 8.5-acre private island on Star Lake with the privacy and seclusion you'd expect, plus the conveniences that make island living easy. Fiber internet availability, modern utility services, and a year-round home allow you to enjoy the island on your terms.

An active bald eagle nest, a lakeside fire pit gathering area, and a sandy shoreline area with potential for future beach enjoyment are just a few of the highlights you'll discover while exploring the established mowed trails that wind through the island. With approximately 2,500 feet of shoreline, you'll enjoy a level of privacy rarely found on traditional lake lots. The modern home is tucked among mature trees and offers multiple living areas, giving family and guests room to spread out after a day on the lake. The wraparound porch quickly becomes a favorite gathering place, whether you're enjoying morning coffee, watching wildlife, sharing drinks with friends, or laughing through a game night long after the sun goes down.

Spend your days boating, fishing, swimming, exploring the island, and making memories with family and friends while enjoying the rare opportunity to own an entire island rather than simply a lake home.

Offered largely turnkey with furnishings, appliances, dock, ATV, riding mower, utility trailer, and additional personal property included.

Additional Details:

Year Built	2008
Lot Acres	8.5
Lot Dimensions	Irregular - Island
School District	548
Taxes	\$2,114
Taxes with Assessments	\$2,114
Tax Year	2025

Additional Features:

Basement: Crawl Space **Fuel:** Electric **Heat:** Baseboard **Sewer:** Tank with Drainage Field **Water:** Sand Point **Air Conditioning:** None

Driving Directions:

Property is only accessible by boat or helicopter



Listed By:
eXp Realty (219 WF)

Affinity Real Estate Inc. participates in the Regional Multiple Listing Service of Minnesota, Inc Broker Reciprocity (sm) program, allowing us to display other broker's listings on our website. All properties are subject to prior sale, change or withdrawal.



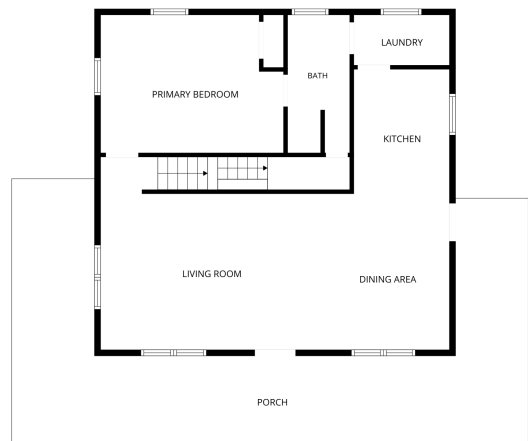
Call Affinity Real Estate

218-237-3333

info@affinityrealestate.com



Affinity Real Estate - 600 Park Avenue South - Park Rapids MN 56470

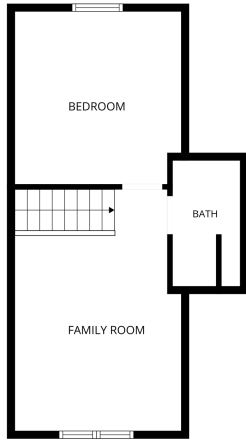


FLOOR PLAN CREATED BY CUBICARA APP. MEASUREMENTS DEEMED HIGHLY RELIABLE BUT NOT GUARANTEED.

website: www.AffinityRealEstate.com | email: info@affinityrealestate.com | office: 218-237-3333 | fax:218-237-3377



\$875,000
 MLS 7090173 Lake Home
 37598 2nd Star Isle
 Dent MN 56528



website: www.AffinityRealEstate.com | email: info@affinityrealestate.com | office: 218-237-3333 | fax:218-237-3377



\$875,000
MLS 7090173 Lake Home
37598 2nd Star Isle
Dent MN 56528

website: www.AffinityRealEstate.com | email: info@affinityrealestate.com | office: 218-237-3333 | fax:218-237-3377



\$875,000
MLS 7090173 Lake Home
37598 2nd Star Isle
Dent MN 56528

website: www.AffinityRealEstate.com | email: info@affinityrealestate.com | office: 218-237-3333 | fax:218-237-3377



\$875,000
MLS 7090173 Lake Home
37598 2nd Star Isle
Dent MN 56528

website: www.AffinityRealEstate.com | email: info@affinityrealestate.com | office: 218-237-3333 | fax:218-237-3377



\$875,000

MLS 7090173 Lake Home
37598 2nd Star Isle
Dent MN 56528

website: www.AffinityRealEstate.com | email: info@affinityrealestate.com | office: 218-237-3333 | fax:218-237-3377



\$875,000
MLS 7090173 Lake Home
37598 2nd Star Isle
Dent MN 56528