



MLS 7090436 Lake Land

**\$239,900**

**Description:**

Enjoy the Northwoods with this beautiful 9-acre wooded lot on Upper Mission Lake. Conveniently located next to a public boat ramp, this property is split by CR-109, with the lakeside portion offering scenic views. Most of the lakeside is lowland; however, the DNR has told the owner it may be possible to cut a path to the lake. The back portion features a cleared gravel pad, ideal for your future plans, and is surrounded by abundant wildlife perfect for nature lovers and outdoor enthusiasts. As an added bonus, an existing dock is included with the property.

**Additional Details:**

Lot Acres	9.06
Lot Dimensions	270x1,742
School District	182
Taxes	\$1,168
Taxes with Assessments	\$1,168
Tax Year	2024

**Additional Features:**

**Driving Directions:**

North on CR-3 Right onto CR-109



Listed By:  
Woods to Water Real Estate

Affinity Real Estate Inc. participates in the Regional Multiple Listing Service of Minnesota, Inc Broker Reciprocity (sm) program, allowing us to display other broker's listings on our website. All properties are subject to prior sale, change or withdrawal.



**Call Affinity Real Estate**

**218-237-3333**

**info@affinityrealestate.com**



**Affinity Real Estate - 600 Park Avenue South - Park Rapids MN 56470**



website: [www.AffinityRealEstate.com](http://www.AffinityRealEstate.com) | email: [info@affinityrealestate.com](mailto:info@affinityrealestate.com) | office: 218-237-3333 | fax:218-237-3377



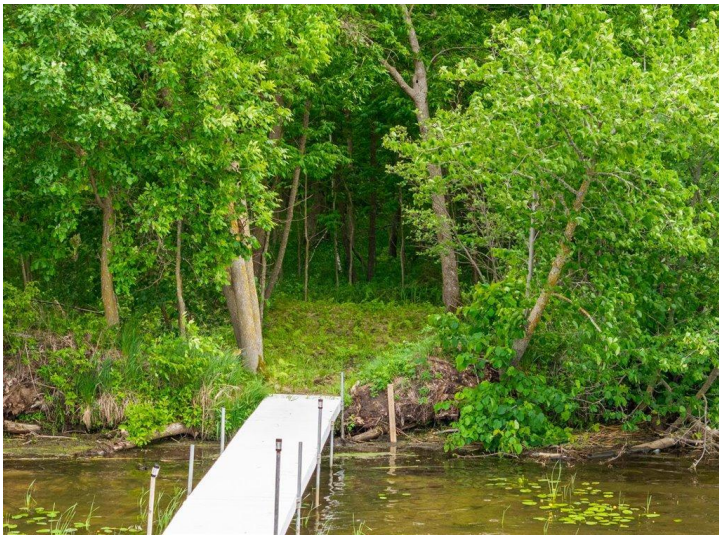
**\$239,900**  
MLS 7090436 Lake Land  
TBD CR-109  
Merrifield MN 56465



website: [www.AffinityRealEstate.com](http://www.AffinityRealEstate.com) | email: [info@affinityrealestate.com](mailto:info@affinityrealestate.com) | office: 218-237-3333 | fax:218-237-3377



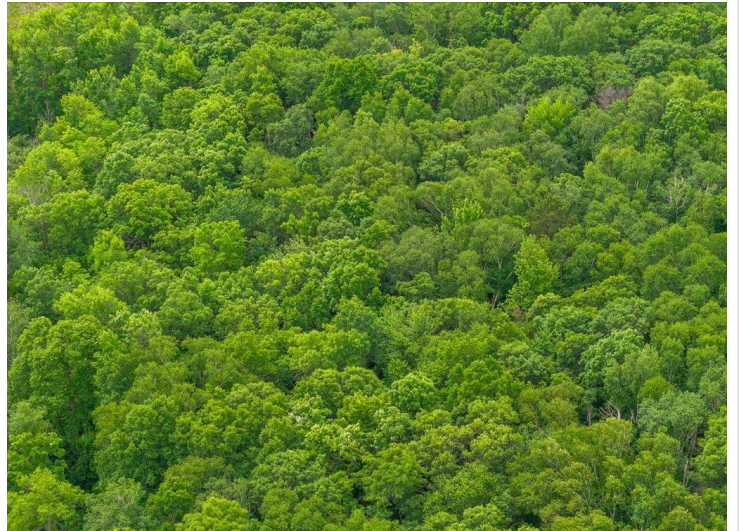
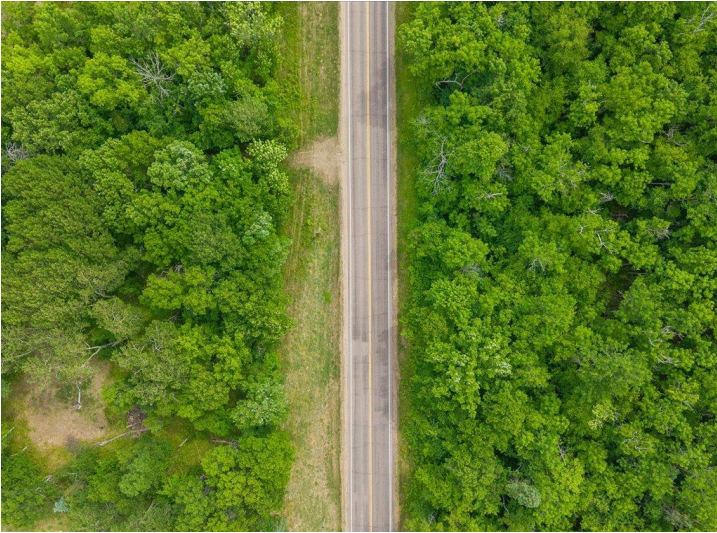
**\$239,900**  
MLS 7090436 Lake Land  
TBD CR-109  
Merrifield MN 56465



website: [www.AffinityRealEstate.com](http://www.AffinityRealEstate.com) | email: [info@affinityrealestate.com](mailto:info@affinityrealestate.com) | office: 218-237-3333 | fax:218-237-3377



**\$239,900**  
MLS 7090436 Lake Land  
TBD CR-109  
Merrifield MN 56465



website: [www.AffinityRealEstate.com](http://www.AffinityRealEstate.com) | email: [info@affinityrealestate.com](mailto:info@affinityrealestate.com) | office: 218-237-3333 | fax:218-237-3377

**Affinity**  
REAL ESTATE INC

**\$239,900**  
MLS 7090436 Lake Land  
TBD CR-109  
Merrifield MN 56465



website: [www.AffinityRealEstate.com](http://www.AffinityRealEstate.com) | email: [info@affinityrealestate.com](mailto:info@affinityrealestate.com) | office: 218-237-3333 | fax:218-237-3377



**\$239,900**  
MLS 7090436 Lake Land  
TBD CR-109  
Merrifield MN 56465



website: [www.AffinityRealEstate.com](http://www.AffinityRealEstate.com) | email: [info@affinityrealestate.com](mailto:info@affinityrealestate.com) | office: 218-237-3333 | fax:218-237-3377



**\$239,900**  
MLS 7090436 Lake Land  
TBD CR-109  
Merrifield MN 56465