



MLS 7090605 Lake Home

\$320,000

1,893 sq ft
3 bedrooms
4 baths

6946 Beach View Lane
Walker MN 56452

Waterfront: Leech

Status: Active

Description:

Imagine owning on Leech Lake — at a fraction of the cost, with none of the work. No maintenance. No off-season worry. No to-do list waiting when you arrive. Just the lake, your people, and a resort that handles everything else.

At Trapper's Landing Lodge, ownership is built around a simple idea: stay here, play here, and let the resort handle the rest. Quarter-share ownership gives you one week per month — 12 weeks annually — on a rotating schedule designed to give every owner equitable access across all seasons. Unit #210-2&3 is offered as two shares, which allows you two weeks per month. When not in use, the home participates in the professionally managed rental program, which can help offset your association dues.

Your shared association dues cover every detail: electricity, propane, interior maintenance and repairs, unit supplies and linens, deep cleaning, reserve funding, applicable insurance, property taxes and more. All of it. You arrive to a vacation home that's been cared for, clean, stocked, and ready. Every time. No projects. No phone calls. No list. Just the lake.

As an owner, the full resort is yours — over 1,600 feet of Leech Lake shoreline, sandy beach, outdoor heated pool, sauna, full-service marina, on-site Merit Restaurant & Bar, and a Pro Shop stocked with gear ready for your time on the water. This is the Northwoods the way it's supposed to feel — unhurried, uncomplicated, and fully lived.

This is true fractional ownership — a deeded, recorded interest in real property that can be sold or passed to family. Not a timeshare. Not a membership. Real property, real ownership, yours to keep. Historical and advanced reservation data available upon request.

Centrally located between Walker and Longville, this multi-level Luxury Lake Home is built around a flexible lock-off design — configure for groups of 4, 8, or up to 12. The lower level features a king primary suite with custom steam shower, full designer kitchen, stone fireplace, and walk-out patio with gas grill. The upper level offers two bedrooms — including a king suite with private stone fireplace — two bathrooms with whirlpool tub, kitchenette, and private balcony overlooking Leech Lake. The full home combines both levels for three bedrooms, three fireplaces, two living areas, a screened-in lakeside porch, and spa-grade baths throughout. Smart TV and fast Wi-Fi throughout.

Showings: Listing agent must be present for all showings. No showings allowed when the property is a residence.



Listed By:
eXp Realty

Additional Details:

Affinity Real Estate Inc. participates in the Regional Multiple Listing Year Built Minnesota, Inc Broker Reciprocity (sm) program, allowing us to display other broker's listings on our website. All properties are subject to prior sale, change or withdrawal.
Lot Acres 0.005
Lot Dimensions 36x75

School District 113
Taxes \$3,568
Taxes with Assessments \$86



Call Affinity Real Estate
218-237-3333
info@affinityrealestate.com



Affinity Real Estate - 600 Park Avenue South - Park Rapids MN 56470



website: www.AffinityRealEstate.com | email: info@affinityrealestate.com | office: 218-237-3333 | fax: 218-237-3377

Affinity
REAL ESTATE INC

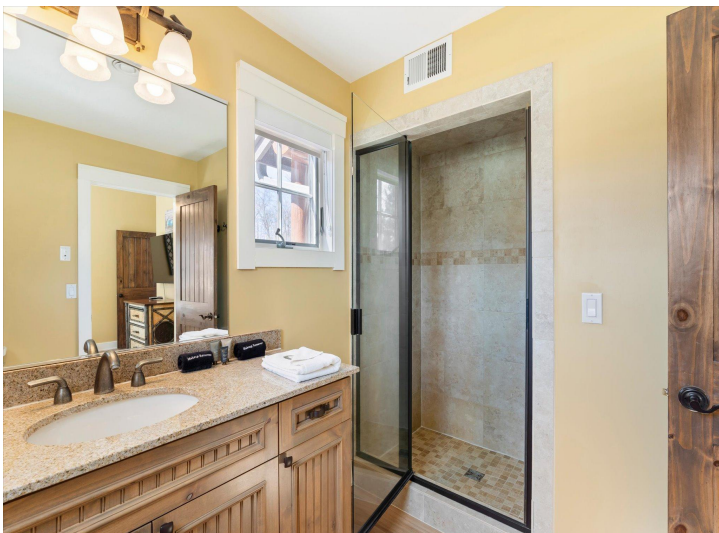
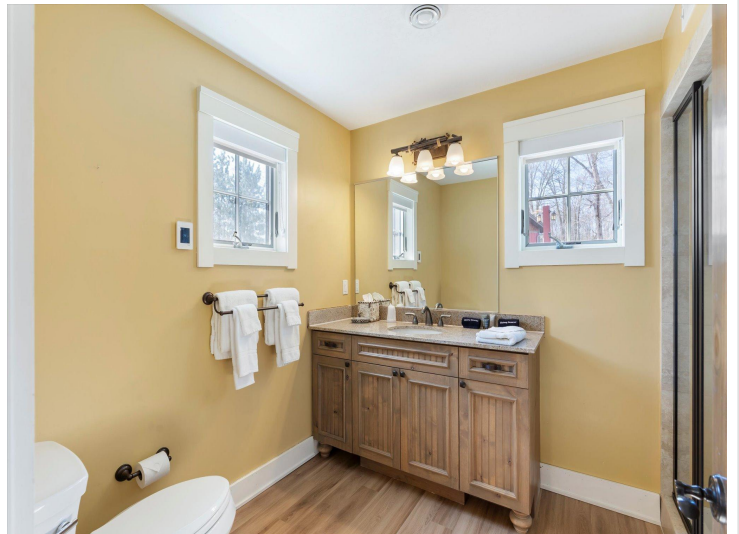
\$320,000
MLS 7090605 Lake Home
6946 Beach View Lane
Walker MN 56452



website: www.AffinityRealEstate.com | email: info@affinityrealestate.com | office: 218-237-3333 | fax:218-237-3377

Affinity
REAL ESTATE INC

\$320,000
MLS 7090605 Lake Home
6946 Beach View Lane
Walker MN 56452



website: www.AffinityRealEstate.com | email: info@affinityrealestate.com | office: 218-237-3333 | fax:218-237-3377

Affinity
REAL ESTATE INC

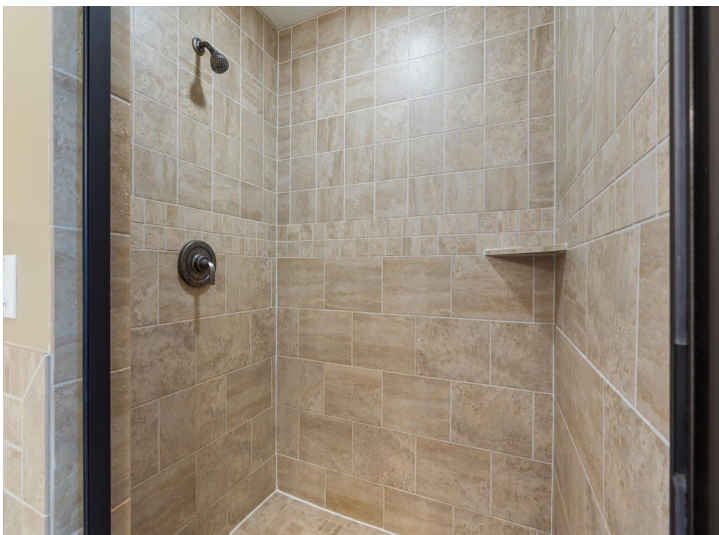
\$320,000
MLS 7090605 Lake Home
6946 Beach View Lane
Walker MN 56452



website: www.AffinityRealEstate.com | email: info@affinityrealestate.com | office: 218-237-3333 | fax:218-237-3377

Affinity
REAL ESTATE INC

\$320,000
MLS 7090605 Lake Home
6946 Beach View Lane
Walker MN 56452



website: www.AffinityRealEstate.com | email: info@affinityrealestate.com | office: 218-237-3333 | fax: 218-237-3377

Affinity
REAL ESTATE INC

\$320,000
MLS 7090605 Lake Home
6946 Beach View Lane
Walker MN 56452



website: www.AffinityRealEstate.com | email: info@affinityrealestate.com | office: 218-237-3333 | fax:218-237-3377

Affinity
REAL ESTATE INC

\$320,000
MLS 7090605 Lake Home
6946 Beach View Lane
Walker MN 56452



website: www.AffinityRealEstate.com | email: info@affinityrealestate.com | office: 218-237-3333 | fax:218-237-3377



\$320,000
MLS 7090605 Lake Home
6946 Beach View Lane
Walker MN 56452



website: www.AffinityRealEstate.com | email: info@affinityrealestate.com | office: 218-237-3333 | fax:218-237-3377



\$320,000
MLS 7090605 Lake Home
6946 Beach View Lane
Walker MN 56452



website: www.AffinityRealEstate.com | email: info@affinityrealestate.com | office: 218-237-3333 | fax:218-237-3377



\$320,000
MLS 7090605 Lake Home
6946 Beach View Lane
Walker MN 56452