



MLS 7090710 Residential

**\$550,000**

2,824 sq ft  
5 bedrooms  
3 baths

37215 Pine Cone Drive  
Menahga MN 56464

Status: Coming Soon

**Description:**

Extensively renovated inside and out, this 5 bedroom, 3 bathroom home on 2.1 acres offers the space, privacy, and updates that are hard to find. Located just minutes from Menahga on a quiet loop with minimal traffic, the property is surrounded by pines and set in a neighborhood of well-kept homes. The main level features a smart, functional layout with 3 bedrooms, including a primary suite, an open concept living area, and an updated kitchen with new cabinets, appliances, and a center island. Downstairs you'll find 2 additional bedrooms, a full bathroom, and a large family room that provides flexible space for entertaining, hobbies, guests, or everyday living. The home has been extensively updated with new siding, flooring, paint, and major interior renovations throughout. Outside, enjoy a spacious backyard, detached sauna building, and hockey rink. The 60x30 shop is a standout feature with 12-foot ceilings, a partially heated work area, and a temperature-controlled office on the back side, making it ideal for storage, projects, a home business, or recreational equipment. Move-in ready and thoughtfully updated, this property offers the combination of privacy, space, and functionality that many buyers are searching for.

**Additional Details:**

Year Built	2006
Lot Acres	2.1
Lot Dimensions	456x200x458x200
Garage Stalls	2
School District	821
Taxes	\$3,270
Taxes with Assessments	\$3,270
Tax Year	2026

**Additional Features:**

**Basement:** Block, Finished, Full **Fuel:** Propane **Garage:** 2 **Heat:** Forced Air **Sewer:** Private Sewer, Tank with Drainage Field **Water:** Drilled, Well  
**Air Conditioning:** Central Air

**Driving Directions:**

From Menahga head east on 1st St NE for 1 miles. Turn left onto Pine Cone Dr. Property will be on the left.



Listed By:  
Keller Williams Realty Professionals

Affinity Real Estate Inc. participates in the Regional Multiple Listing Service of Minnesota, Inc Broker Reciprocity (sm) program, allowing us to display other broker's listings on our website. All properties are subject to prior sale, change or withdrawal.



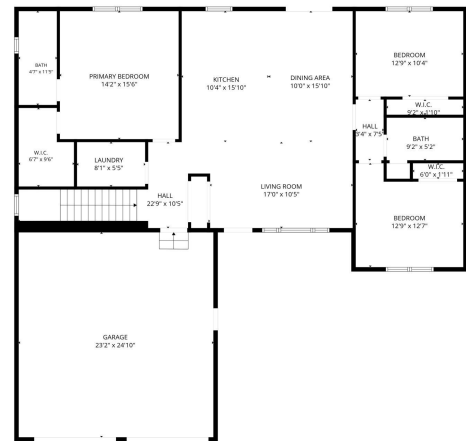
**Call Affinity Real Estate**

**218-237-3333**

**info@affinityrealestate.com**



**Affinity Real Estate - 600 Park Avenue South - Park Rapids MN 56470**

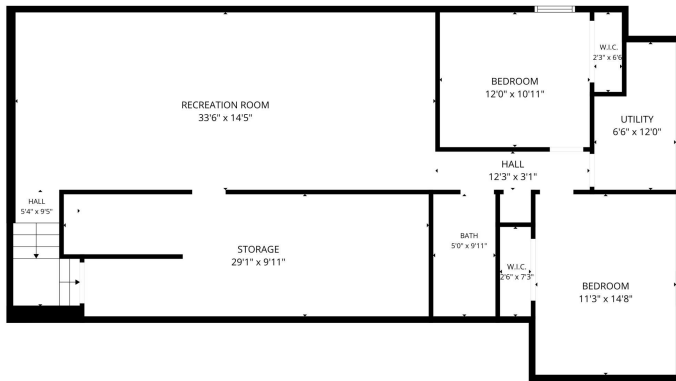


FLOOR PLAN CREATED BY CUBICASA APP. MEASUREMENTS DEEMED HIGHLY RELIABLE BUT NOT GUARANTEED.

website: [www.AffinityRealEstate.com](http://www.AffinityRealEstate.com) | email: [info@affinityrealestate.com](mailto:info@affinityrealestate.com) | office: 218-237-3333 | fax: 218-237-3377



**\$550,000**  
 MLS 7090710 Residential  
 37215 Pine Cone Drive  
 Menahga MN 56464



website: [www.AffinityRealEstate.com](http://www.AffinityRealEstate.com) | email: [info@affinityrealestate.com](mailto:info@affinityrealestate.com) | office: 218-237-3333 | fax:218-237-3377



**\$550,000**  
MLS 7090710 Residential  
37215 Pine Cone Drive  
Menahga MN 56464