



MLS 7090810 Lake Home

**\$949,900**

3,173 sq ft  
4 bedrooms  
4 baths

30133 Wildwood Road  
Ashby MN 56309

Waterfront: Pelican

Status: Active

**Description:**

Introducing 30133 Wildwood Rd, situated on nearly an acre in a quiet bay of Pelican Lake in Ashby, MN. This stunning fully furnished 4 bedroom, 4 bathroom lake home offers 138 feet of shoreline with calm water and a flat, level walk to the lake. Dock and boat lift are included for immediate enjoyment. Designed for both comfort and entertaining, the home features spacious gathering areas and a seamless indoor outdoor flow. Being sold fully furnished, it is a true turnkey opportunity for a private retreat or investment. The 30x40 pole shed provides excellent storage for boats, recreational vehicles, and more. Pelican Lake is known for its expansive water, boating, and fishing, making this a rare opportunity to own a refined lakefront property.

**Additional Details:**

Year Built	2006
Lot Acres	0.94
Lot Dimensions	269x240x138x217
Garage Stalls	3
School District	2908
Taxes	\$4,628
Taxes with Assessments	\$4,628
Tax Year	2025

**Additional Features:**

**Basement:** Finished, Walkout **Fuel:** Electric, Propane **Garage:** 3 **Heat:** Forced Air **Sewer:** Septic System Compliant - Yes **Water:** Well **Air Conditioning:** Central Air

**Driving Directions:**

From Ashby, Co. Rd. 82 east to Co. Rd. 19, south to signs.



Listed By:  
Pemberton RE

Affinity Real Estate Inc. participates in the Regional Multiple Listing Service of Minnesota, Inc Broker Reciprocity (sm) program, allowing us to display other broker's listings on our website. All properties are subject to prior sale, change or withdrawal.



**Call Affinity Real Estate**

**218-237-3333**

**info@affinityrealestate.com**



**Affinity Real Estate - 600 Park Avenue South - Park Rapids MN 56470**



website: [www.AffinityRealEstate.com](http://www.AffinityRealEstate.com) | email: [info@affinityrealestate.com](mailto:info@affinityrealestate.com) | office: 218-237-3333 | fax:218-237-3377



**\$949,900**  
MLS 7090810 Lake Home  
30133 Wildwood Road  
Ashby MN 56309



website: [www.AffinityRealEstate.com](http://www.AffinityRealEstate.com) | email: [info@affinityrealestate.com](mailto:info@affinityrealestate.com) | office: 218-237-3333 | fax:218-237-3377



**\$949,900**  
MLS 7090810 Lake Home  
30133 Wildwood Road  
Ashby MN 56309



website: [www.AffinityRealEstate.com](http://www.AffinityRealEstate.com) | email: [info@affinityrealestate.com](mailto:info@affinityrealestate.com) | office: 218-237-3333 | fax: 218-237-3377

**Affinity**  
REAL ESTATE INC

**\$949,900**  
MLS 7090810 Lake Home  
30133 Wildwood Road  
Ashby MN 56309



website: [www.AffinityRealEstate.com](http://www.AffinityRealEstate.com) | email: [info@affinityrealestate.com](mailto:info@affinityrealestate.com) | office: 218-237-3333 | fax:218-237-3377

**Affinity**  
REAL ESTATE INC

**\$949,900**  
MLS 7090810 Lake Home  
30133 Wildwood Road  
Ashby MN 56309



website: [www.AffinityRealEstate.com](http://www.AffinityRealEstate.com) | email: [info@affinityrealestate.com](mailto:info@affinityrealestate.com) | office: 218-237-3333 | fax: 218-237-3377

**Affinity**  
REAL ESTATE INC

**\$949,900**  
MLS 7090810 Lake Home  
30133 Wildwood Road  
Ashby MN 56309



website: [www.AffinityRealEstate.com](http://www.AffinityRealEstate.com) | email: [info@affinityrealestate.com](mailto:info@affinityrealestate.com) | office: 218-237-3333 | fax:218-237-3377



**\$949,900**  
MLS 7090810 Lake Home  
30133 Wildwood Road  
Ashby MN 56309



website: [www.AffinityRealEstate.com](http://www.AffinityRealEstate.com) | email: [info@affinityrealestate.com](mailto:info@affinityrealestate.com) | office: 218-237-3333 | fax:218-237-3377

**Affinity**  
REAL ESTATE INC

**\$949,900**  
MLS 7090810 Lake Home  
30133 Wildwood Road  
Ashby MN 56309



website: [www.AffinityRealEstate.com](http://www.AffinityRealEstate.com) | email: [info@affinityrealestate.com](mailto:info@affinityrealestate.com) | office: 218-237-3333 | fax:218-237-3377

**Affinity**  
REAL ESTATE INC

**\$949,900**  
MLS 7090810 Lake Home  
30133 Wildwood Road  
Ashby MN 56309



website: [www.AffinityRealEstate.com](http://www.AffinityRealEstate.com) | email: [info@affinityrealestate.com](mailto:info@affinityrealestate.com) | office: 218-237-3333 | fax:218-237-3377

**Affinity**  
REAL ESTATE INC

**\$949,900**  
MLS 7090810 Lake Home  
30133 Wildwood Road  
Ashby MN 56309



website: [www.AffinityRealEstate.com](http://www.AffinityRealEstate.com) | email: [info@affinityrealestate.com](mailto:info@affinityrealestate.com) | office: 218-237-3333 | fax:218-237-3377



**\$949,900**  
MLS 7090810 Lake Home  
30133 Wildwood Road  
Ashby MN 56309



website: [www.AffinityRealEstate.com](http://www.AffinityRealEstate.com) | email: [info@affinityrealestate.com](mailto:info@affinityrealestate.com) | office: 218-237-3333 | fax:218-237-3377



**\$949,900**  
MLS 7090810 Lake Home  
30133 Wildwood Road  
Ashby MN 56309



website: [www.AffinityRealEstate.com](http://www.AffinityRealEstate.com) | email: [info@affinityrealestate.com](mailto:info@affinityrealestate.com) | office: 218-237-3333 | fax:218-237-3377



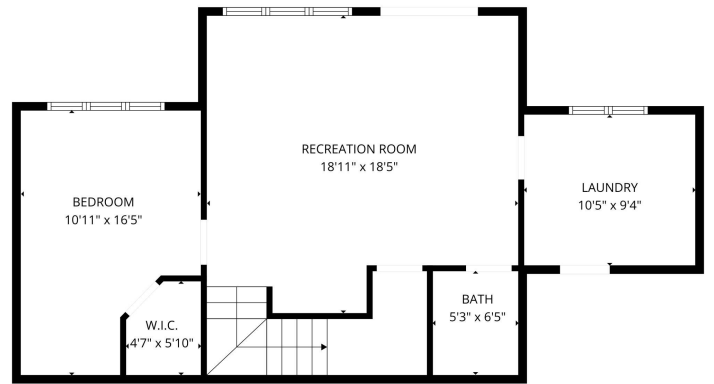
**\$949,900**  
MLS 7090810 Lake Home  
30133 Wildwood Road  
Ashby MN 56309



website: [www.AffinityRealEstate.com](http://www.AffinityRealEstate.com) | email: [info@affinityrealestate.com](mailto:info@affinityrealestate.com) | office: 218-237-3333 | fax:218-237-3377



**\$949,900**  
MLS 7090810 Lake Home  
30133 Wildwood Road  
Ashby MN 56309

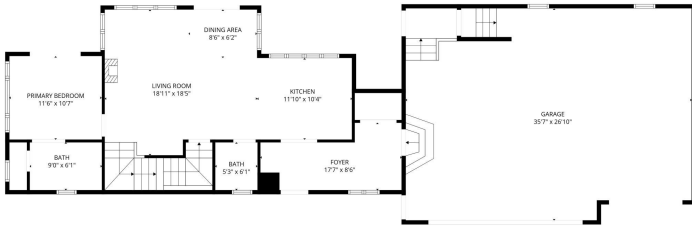


Total GLA: 1735 sq. ft. | Total: 3936 sq. ft.  
 Basement: 774 sq. ft.  
 1st floor: 981 sq. ft. (Excluded areas 983 sq. ft.)  
 2nd floor: 0 sq. ft. (Excluded areas 390 sq. ft.)  
 3rd floor: 754 sq. ft. (Excluded areas 65 sq. ft.)

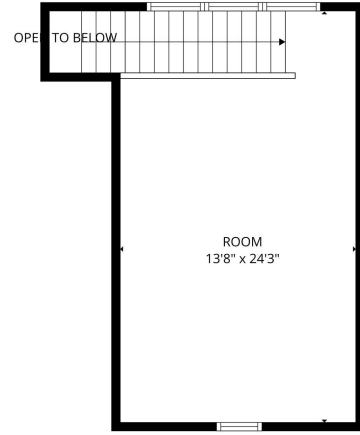
website: [www.AffinityRealEstate.com](http://www.AffinityRealEstate.com) | email: [info@affinityrealestate.com](mailto:info@affinityrealestate.com) | office: 218-237-3333 | fax: 218-237-3377



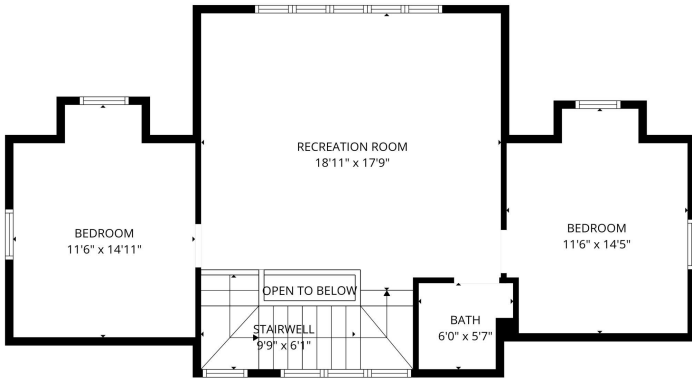
**\$949,900**  
 MLS 7090810 Lake Home  
 30133 Wildwood Road  
 Ashby MN 56309



**Total GLA: 1735 sq. ft | Total: 3936 sq. ft**  
 Basement: 774 sq. ft  
 1st floor: 981 sq. ft (Excluded areas 983 sq. ft)  
 2nd floor: 0 sq. ft (Excluded areas 390 sq. ft)  
 3rd floor: 754 sq. ft (Excluded areas 65 sq. ft)



**Total GLA: 1735 sq. ft | Total: 3936 sq. ft**  
 Basement: 774 sq. ft  
 1st floor: 981 sq. ft (Excluded areas 983 sq. ft)  
 2nd floor: 0 sq. ft (Excluded areas 390 sq. ft)  
 3rd floor: 754 sq. ft (Excluded areas 65 sq. ft)



**Total GLA: 1735 sq. ft | Total: 3936 sq. ft**  
 Basement: 774 sq. ft  
 1st floor: 981 sq. ft (Excluded areas 983 sq. ft)  
 2nd floor: 0 sq. ft (Excluded areas 390 sq. ft)  
 3rd floor: 754 sq. ft (Excluded areas 65 sq. ft)



**Total GLA: 1735 sq. ft | Total: 3936 sq. ft**  
 Basement: 774 sq. ft  
 1st floor: 981 sq. ft (Excluded areas 983 sq. ft)  
 2nd floor: 0 sq. ft (Excluded areas 390 sq. ft)  
 3rd floor: 754 sq. ft (Excluded areas 65 sq. ft)

website: [www.AffinityRealEstate.com](http://www.AffinityRealEstate.com) | email: [info@affinityrealestate.com](mailto:info@affinityrealestate.com) | office: 218-237-3333 | fax: 218-237-3377



**\$949,900**  
 MLS 7090810 Lake Home  
 30133 Wildwood Road  
 Ashby MN 56309