



MLS 7090980 Residential

\$319,900

1,288 sq ft
2 bedrooms
2 baths

1001 Beech Street
Brainerd MN 56401

Status: Active

Description:

Well-maintained one-owner 2-bedroom, 2-bath home featuring a spacious open-concept layout and convenient main floor laundry. Situated on an extra-large, level lot—perfect for outdoor activities, gardening, or future fire pit space. The property offers excellent storage and versatility with a 2-car attached garage plus an additional 1-car detached garage. Recent updates include a newer furnace and water heater for added comfort and efficiency. A large unfinished basement provides great potential for additional living space! Move-in ready with room to grow in a desirable Brainerd location!

Additional Details:

Year Built	1992
Lot Acres	0.78
Lot Dimensions	109x315
Garage Stalls	3
School District	181
Taxes	\$2,899
Taxes with Assessments	\$2,924
Tax Year	2026

Additional Features:

Basement: Block, Full, Storage Space, Unfinished **Fuel:** Natural Gas **Garage:** 3 **Heat:** Forced Air **Sewer:** City Sewer/Connected **Water:** City Water/Connected **Air Conditioning:** Central Air

Driving Directions:

1001 Beech Street



Listed By:
Edina Realty, Inc.

Affinity Real Estate Inc. participates in the Regional Multiple Listing Service of Minnesota, Inc Broker Reciprocity (sm) program, allowing us to display other broker's listings on our website. All properties are subject to prior sale, change or withdrawal.



Call Affinity Real Estate

218-237-3333

info@affinityrealestate.com



Affinity Real Estate - 600 Park Avenue South - Park Rapids MN 56470



website: www.AffinityRealEstate.com | email: info@affinityrealestate.com | office: 218-237-3333 | fax:218-237-3377

Affinity
REAL ESTATE INC

\$319,900
MLS 7090980 Residential
1001 Beech Street
Brainerd MN 56401



website: www.AffinityRealEstate.com | email: info@affinityrealestate.com | office: 218-237-3333 | fax:218-237-3377



\$319,900
MLS 7090980 Residential
1001 Beech Street
Brainerd MN 56401



website: www.AffinityRealEstate.com | email: info@affinityrealestate.com | office: 218-237-3333 | fax: 218-237-3377

Affinity
REAL ESTATE INC

\$319,900
MLS 7090980 Residential
1001 Beech Street
Brainerd MN 56401



website: www.AffinityRealEstate.com | email: info@affinityrealestate.com | office: 218-237-3333 | fax:218-237-3377



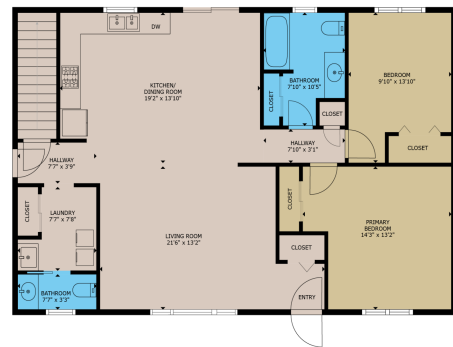
\$319,900
MLS 7090980 Residential
1001 Beech Street
Brainerd MN 56401



website: www.AffinityRealEstate.com | email: info@affinityrealestate.com | office: 218-237-3333 | fax:218-237-3377



\$319,900
MLS 7090980 Residential
1001 Beech Street
Brainerd MN 56401



FLOOR 2

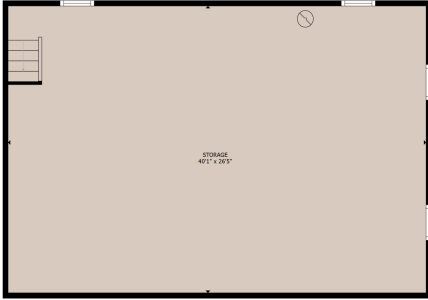
GROSS INTERNAL AREA
 FLOOR 1: 1,099 sq. ft. FLOOR 2: 1,135 sq. ft.
 TOTAL: 2,234 sq. ft.
MEASUREMENTS ARE APPROXIMATE. ACTUAL MAY VARY.



website: www.AffinityRealEstate.com | email: info@affinityrealestate.com | office: 218-237-3333 | fax: 218-237-3377



\$319,900
 MLS 7090980 Residential
 1001 Beech Street
 Brainerd MN 56401



FLOOR 1

GROSS INTERNAL AREA
FLOOR 1: 2,009 sq. ft. FLOOR 2: 1,139 sq. ft.
TOTAL: 3,148 sq. ft.
SIZES AND DIMENSIONS ARE APPROXIMATE, ACTUAL MAY VARY.



website: www.AffinityRealEstate.com | email: info@affinityrealestate.com | office: 218-237-3333 | fax:218-237-3377



\$319,900
MLS 7090980 Residential
1001 Beech Street
Brainerd MN 56401