



MLS 7091282 Land

\$159,900

7.22 Acres
Site Plan Approved

4742 Gold Finch Circle
Miltona MN 56354

Status: Active

Description:

Rare opportunity to own six lots being sold together for a total of 7.22 acres! Bring your building plans and create your dream home surrounded by beautiful mature pine trees in a peaceful country setting. Enjoy the privacy and natural beauty of this wooded property while remaining just minutes from the Miltona Golf Club and the crystal-clear waters of Lake Miltona, Lake Irene, and Vermont Lake. Whether you're looking for a year-round residence or a weekend retreat, or even a developer of land, this property offers the perfect blend of seclusion, recreation, and convenience.

Additional Details:

Lot Acres	7.22
Lot Dimensions	Irregular
School District	206
Taxes	\$828
Taxes with Assessments	\$828
Tax Year	2026

Additional Features:

Driving Directions:

From Alexandria take Hwy 29N to Gold Finch Circle NE across from the Miltona Golf Course.



Listed By:
RES Realty

Affinity Real Estate Inc. participates in the Regional Multiple Listing Service of Minnesota, Inc Broker Reciprocity (sm) program, allowing us to display other broker's listings on our website. All properties are subject to prior sale, change or withdrawal.



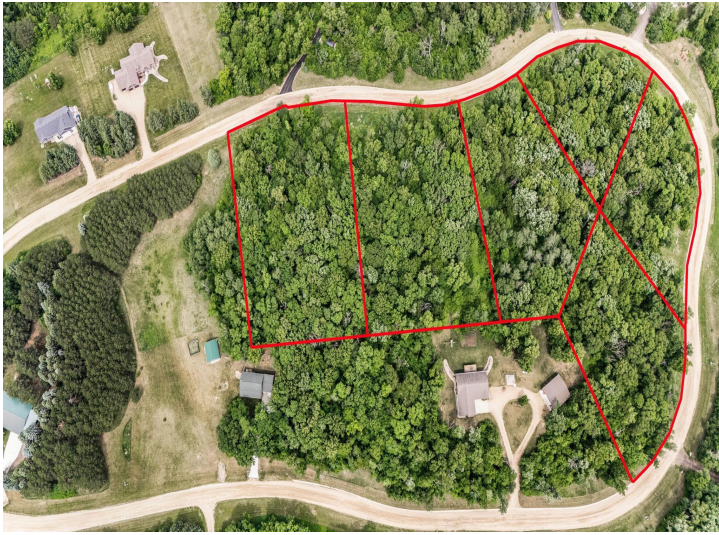
Call Affinity Real Estate

218-237-3333

info@affinityrealestate.com



Affinity Real Estate - 600 Park Avenue South - Park Rapids MN 56470



website: www.AffinityRealEstate.com | email: info@affinityrealestate.com | office: 218-237-3333 | fax:218-237-3377

Affinity
REAL ESTATE INC

\$159,900
MLS 7091282 Land
4742 Gold Finch Circle
Miltona MN 56354



website: www.AffinityRealEstate.com | email: info@affinityrealestate.com | office: 218-237-3333 | fax:218-237-3377



\$159,900
MLS 7091282 Land
4742 Gold Finch Circle
Miltona MN 56354



website: www.AffinityRealEstate.com | email: info@affinityrealestate.com | office: 218-237-3333 | fax:218-237-3377



\$159,900
MLS 7091282 Land
4742 Gold Finch Circle
Miltona MN 56354