



MLS 7091331 Residential

\$179,900

0 sq ft
3 bedrooms
2 baths

Tract B 113 Street
Ashby MN 56309

Status: Active

Description:

Opportunity awaits with this new construction shouse situated on 6 beautiful acres in the heart of lakes country! Measuring 32'x72' with impressive 14-foot sidewalls, this spacious building is designed for 3 bedrooms and 2 bathrooms, offering the perfect chance to finish the interior to your own style and preferences.

Large windows provide abundant natural light and showcase the scenic countryside views surrounding the property. The expansive garage area offers plenty of room for vehicles, recreational equipment, storage, or workshop space.

Conveniently located between Battle Lake and Ashby, this property enjoys easy access from both State Hwy 78 and a township road. A mature grove of trees to the northwest provides protection from the elements while adding privacy and character to the setting. With ample room for additional buildings, hobbies, or future expansion, this acreage offers endless possibilities.

Enjoy peaceful country living while being just minutes from many of the area's most popular lakes, recreational opportunities, and small-town amenities. Don't miss your chance to make this versatile property your own.

Additional Details:

Year Built	2026
Lot Acres	6
Lot Dimensions	370x700
Garage Stalls	2
School District	2908
Taxes	(unreported)
Taxes with Assessments	(unreported)
Tax Year	2026

Additional Features:

Basement: None **Fuel:** Electric **Garage:** 2 **Heat:** In-Floor Heating **Sewer:** None **Water:** None **Air Conditioning:** None

Driving Directions:

From the intersection of 113th St and State Hwy 78, the property is on the SE corner.



Listed By:
Century 21 Atwood

Affinity Real Estate Inc. participates in the Regional Multiple Listing Service of Minnesota, Inc Broker Reciprocity (sm) program, allowing us to display other broker's listings on our website. All properties are subject to prior sale, change or withdrawal.



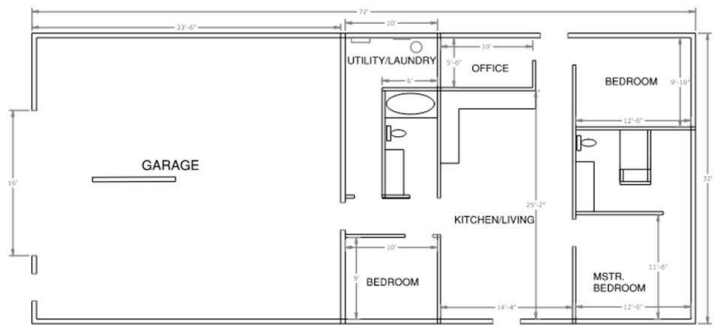
Call Affinity Real Estate

218-237-3333

info@affinityrealestate.com



Affinity Real Estate - 600 Park Avenue South - Park Rapids MN 56470



website: www.AffinityRealEstate.com | email: info@affinityrealestate.com | office: 218-237-3333 | fax: 218-237-3377



\$179,900
 MLS 7091331 Residential
 Tract B 113 Street
 Ashby MN 56309



website: www.AffinityRealEstate.com | email: info@affinityrealestate.com | office: 218-237-3333 | fax:218-237-3377



\$179,900
MLS 7091331 Residential
Tract B 113 Street
Ashby MN 56309



website: www.AffinityRealEstate.com | email: info@affinityrealestate.com | office: 218-237-3333 | fax:218-237-3377



\$179,900
MLS 7091331 Residential
Tract B 113 Street
Ashby MN 56309



website: www.AffinityRealEstate.com | email: info@affinityrealestate.com | office: 218-237-3333 | fax:218-237-3377

Affinity
REAL ESTATE INC

\$179,900
MLS 7091331 Residential
Tract B 113 Street
Ashby MN 56309



website: www.AffinityRealEstate.com | email: info@affinityrealestate.com | office: 218-237-3333 | fax:218-237-3377

Affinity
REAL ESTATE INC

\$179,900
MLS 7091331 Residential
Tract B 113 Street
Ashby MN 56309



website: www.AffinityRealEstate.com | email: info@affinityrealestate.com | office: 218-237-3333 | fax:218-237-3377



\$179,900
MLS 7091331 Residential
Tract B 113 Street
Ashby MN 56309



website: www.AffinityRealEstate.com | email: info@affinityrealestate.com | office: 218-237-3333 | fax:218-237-3377



\$179,900
MLS 7091331 Residential
Tract B 113 Street
Ashby MN 56309



website: www.AffinityRealEstate.com | email: info@affinityrealestate.com | office: 218-237-3333 | fax:218-237-3377



\$179,900
MLS 7091331 Residential
Tract B 113 Street
Ashby MN 56309