



MLS 7091381 Lake Home

**\$1,200,000**

3,466 sq ft  
3 bedrooms  
3 baths

15169 Cranberry Drive  
Park Rapids MN 56470

Waterfront: Stony

Status: Active

**Description:**

**Big Stony Lake Retreat | Stony Lake House**

Welcome to Stony Lake House, a one-of-a-kind lakefront retreat on Big Stony Lake in Hubbard County. Set on 1.46 gently sloping acres with 150 feet of southwest-facing shoreline, this custom-built 3600+ square foot of living space offers the feel of a private resort with exceptional comfort, energy efficiency, and year-round recreation.

Built in 2014 with SIP panel construction, a ground source heat pump, in-floor heat (basement, main bath & primary bath) both gas and wood fireplaces, the home blends thoughtful design with efficient living. The main residence includes 3 bedrooms, 3 bathrooms, a sauna, and a layout designed for convenient single-level living.


Interior highlights include an ADA-compliant bathroom with a roll-in shower, a spacious 28x20 great room for living and dining, dramatic 22-foot vaulted ceilings, and a screened porch overlooking the lake. The private primary suite features its own bath and walk-in closet. The lower level offers a large family room and wood fireplace with a walkout on the lake side. It showcases locally harvested knotty pine, has a large bedroom with walk-in closet, a full bath and game room. Additional flexible spaces include a 400 square foot artist's loft with beautiful lake views. Above the garage is a 500+ square foot bonus room with its own independent HVAC—ideal for a home office, studio, or private guest retreat. A cozy breezeway entry supports easy lake living with convenient access to the sauna and an open deck designed for outdoor cooking, entertaining, and quick access to the water.

Outside, the property is built for making the most of lake life, with a private launch ramp, two docks, a swim raft, a sandy beach area, and room to enjoy every season on the water.

The property also includes a two-car attached insulated garage with workshop space, a 24x24 storage shed for yard equipment and seasonal toys, and a beach house with storage for lakeside essentials plus a lake water pump system for irrigation.

For hosting family and friends, the 750 square foot dry bunkhouse offers one bedroom, a loft, and generous overflow sleeping space. Altogether, the property can accommodate sleeping for 20 guests, making it ideal for large gatherings while still offering plenty of quiet places to relax and unwind. This home can also be income producing with a usage fee of \$600-800/night as a short-term rental. Even outside the home, there's an RV pad with full hookups alongside the garage and power in the garage for EV charging. This beautiful home is a gem. It has never been on the market and won't last long!

**Additional Details:**

Year Built	2013
 Listed By 1.45 National Realty Guild	304x265x304x150
Garage Stalls	2
School District	308
Taxes	\$8,104
Taxes with Assessments	\$5,346
Tax Year	2026



**Call Affinity Real Estate**

**218-237-3333**

**info@affinityrealestate.com**



**Affinity Real Estate - 600 Park Avenue South - Park Rapids MN 56470**

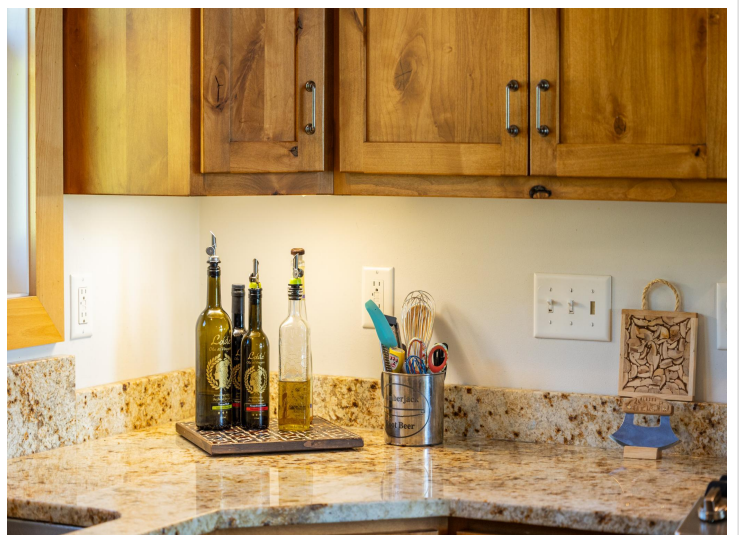
**Additional Features:**



website: [www.AffinityRealEstate.com](http://www.AffinityRealEstate.com) | email: [info@affinityrealestate.com](mailto:info@affinityrealestate.com) | office: 218-237-3333 | fax:218-237-3377



**\$1,200,000**  
MLS 7091381 Lake Home  
15169 Cranberry Drive  
Park Rapids MN 56470



website: [www.AffinityRealEstate.com](http://www.AffinityRealEstate.com) | email: [info@affinityrealestate.com](mailto:info@affinityrealestate.com) | office: 218-237-3333 | fax: 218-237-3377

**Affinity**  
REAL ESTATE INC

**\$1,200,000**  
MLS 7091381 Lake Home  
15169 Cranberry Drive  
Park Rapids MN 56470



website: [www.AffinityRealEstate.com](http://www.AffinityRealEstate.com) | email: [info@affinityrealestate.com](mailto:info@affinityrealestate.com) | office: 218-237-3333 | fax:218-237-3377

**Affinity**  
REAL ESTATE INC

**\$1,200,000**  
MLS 7091381 Lake Home  
15169 Cranberry Drive  
Park Rapids MN 56470



website: [www.AffinityRealEstate.com](http://www.AffinityRealEstate.com) | email: [info@affinityrealestate.com](mailto:info@affinityrealestate.com) | office: 218-237-3333 | fax:218-237-3377

**Affinity**  
REAL ESTATE INC

**\$1,200,000**  
MLS 7091381 Lake Home  
15169 Cranberry Drive  
Park Rapids MN 56470



website: [www.AffinityRealEstate.com](http://www.AffinityRealEstate.com) | email: [info@affinityrealestate.com](mailto:info@affinityrealestate.com) | office: 218-237-3333 | fax: 218-237-3377

**Affinity**  
REAL ESTATE INC

**\$1,200,000**  
MLS 7091381 Lake Home  
15169 Cranberry Drive  
Park Rapids MN 56470



website: [www.AffinityRealEstate.com](http://www.AffinityRealEstate.com) | email: [info@affinityrealestate.com](mailto:info@affinityrealestate.com) | office: 218-237-3333 | fax: 218-237-3377

**Affinity**  
REAL ESTATE INC

**\$1,200,000**  
MLS 7091381 Lake Home  
15169 Cranberry Drive  
Park Rapids MN 56470



website: [www.AffinityRealEstate.com](http://www.AffinityRealEstate.com) | email: [info@affinityrealestate.com](mailto:info@affinityrealestate.com) | office: 218-237-3333 | fax: 218-237-3377

**Affinity**  
REAL ESTATE INC

**\$1,200,000**  
MLS 7091381 Lake Home  
15169 Cranberry Drive  
Park Rapids MN 56470



website: [www.AffinityRealEstate.com](http://www.AffinityRealEstate.com) | email: [info@affinityrealestate.com](mailto:info@affinityrealestate.com) | office: 218-237-3333 | fax:218-237-3377

**Affinity**  
REAL ESTATE INC

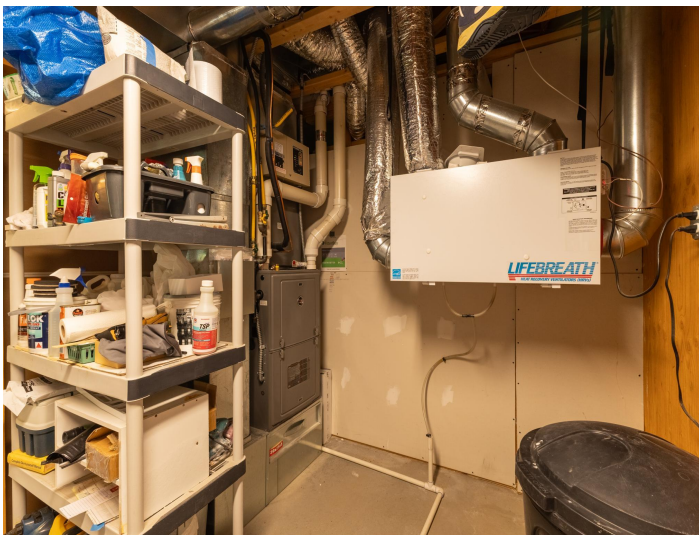
**\$1,200,000**  
MLS 7091381 Lake Home  
15169 Cranberry Drive  
Park Rapids MN 56470



website: [www.AffinityRealEstate.com](http://www.AffinityRealEstate.com) | email: [info@affinityrealestate.com](mailto:info@affinityrealestate.com) | office: 218-237-3333 | fax: 218-237-3377

**Affinity**  
REAL ESTATE INC

**\$1,200,000**  
MLS 7091381 Lake Home  
15169 Cranberry Drive  
Park Rapids MN 56470



website: [www.AffinityRealEstate.com](http://www.AffinityRealEstate.com) | email: [info@affinityrealestate.com](mailto:info@affinityrealestate.com) | office: 218-237-3333 | fax:218-237-3377

**Affinity**  
REAL ESTATE INC

**\$1,200,000**  
MLS 7091381 Lake Home  
15169 Cranberry Drive  
Park Rapids MN 56470



website: [www.AffinityRealEstate.com](http://www.AffinityRealEstate.com) | email: [info@affinityrealestate.com](mailto:info@affinityrealestate.com) | office: 218-237-3333 | fax:218-237-3377

**Affinity**  
REAL ESTATE INC

**\$1,200,000**  
MLS 7091381 Lake Home  
15169 Cranberry Drive  
Park Rapids MN 56470



website: [www.AffinityRealEstate.com](http://www.AffinityRealEstate.com) | email: [info@affinityrealestate.com](mailto:info@affinityrealestate.com) | office: 218-237-3333 | fax: 218-237-3377

**Affinity**  
REAL ESTATE INC

**\$1,200,000**  
MLS 7091381 Lake Home  
15169 Cranberry Drive  
Park Rapids MN 56470



website: [www.AffinityRealEstate.com](http://www.AffinityRealEstate.com) | email: [info@affinityrealestate.com](mailto:info@affinityrealestate.com) | office: 218-237-3333 | fax:218-237-3377

**Affinity**  
REAL ESTATE INC

**\$1,200,000**  
MLS 7091381 Lake Home  
15169 Cranberry Drive  
Park Rapids MN 56470



website: [www.AffinityRealEstate.com](http://www.AffinityRealEstate.com) | email: [info@affinityrealestate.com](mailto:info@affinityrealestate.com) | office: 218-237-3333 | fax: 218-237-3377

**Affinity**  
REAL ESTATE INC

**\$1,200,000**  
MLS 7091381 Lake Home  
15169 Cranberry Drive  
Park Rapids MN 56470



website: [www.AffinityRealEstate.com](http://www.AffinityRealEstate.com) | email: [info@affinityrealestate.com](mailto:info@affinityrealestate.com) | office: 218-237-3333 | fax:218-237-3377



**\$1,200,000**  
MLS 7091381 Lake Home  
15169 Cranberry Drive  
Park Rapids MN 56470



website: [www.AffinityRealEstate.com](http://www.AffinityRealEstate.com) | email: [info@affinityrealestate.com](mailto:info@affinityrealestate.com) | office: 218-237-3333 | fax:218-237-3377

**Affinity**  
REAL ESTATE INC

**\$1,200,000**  
MLS 7091381 Lake Home  
15169 Cranberry Drive  
Park Rapids MN 56470



website: [www.AffinityRealEstate.com](http://www.AffinityRealEstate.com) | email: [info@affinityrealestate.com](mailto:info@affinityrealestate.com) | office: 218-237-3333 | fax:218-237-3377



**\$1,200,000**  
MLS 7091381 Lake Home  
15169 Cranberry Drive  
Park Rapids MN 56470



website: [www.AffinityRealEstate.com](http://www.AffinityRealEstate.com) | email: [info@affinityrealestate.com](mailto:info@affinityrealestate.com) | office: 218-237-3333 | fax:218-237-3377

**Affinity**  
REAL ESTATE INC

**\$1,200,000**  
MLS 7091381 Lake Home  
15169 Cranberry Drive  
Park Rapids MN 56470



website: [www.AffinityRealEstate.com](http://www.AffinityRealEstate.com) | email: [info@affinityrealestate.com](mailto:info@affinityrealestate.com) | office: 218-237-3333 | fax:218-237-3377



**\$1,200,000**  
MLS 7091381 Lake Home  
15169 Cranberry Drive  
Park Rapids MN 56470



website: [www.AffinityRealEstate.com](http://www.AffinityRealEstate.com) | email: [info@affinityrealestate.com](mailto:info@affinityrealestate.com) | office: 218-237-3333 | fax:218-237-3377



**\$1,200,000**  
MLS 7091381 Lake Home  
15169 Cranberry Drive  
Park Rapids MN 56470