



MLS 7091388 Lake Home

\$549,900

1,552 sq ft
3 bedrooms
2 baths

11815 Maplewood Drive
Brainerd MN 56401

Waterfront: Dade

Status: Active

Description:

If you've been dreaming of a quiet lakeside escape with room to breathe, this one checks every box. Nestled on two heavily wooded acres along Dade Lake in East Gull Lake, known for bass, sunfish, and northern pike, this split-entry home backs up to Cass County land, giving you privacy that's hard to come by.

The main level features hickory cabinetry in the kitchen, a gas fireplace, walk-in closets in the bedrooms, and a 10x12 three-season porch perfect for morning coffee. Downstairs you'll find a family room with a wood-burning fireplace, another bedroom, and a flexible room that could easily serve as a fourth bedroom.

The dock and boat are included, just show up and get on the water. Anglers will feel right at home.

Location-wise, the neighborhood is across from Maddens Golf Course with several more courses nearby, plus walking trails and plenty of great local restaurants to explore.

A property like this, with the acreage, the lake access, and the setting, doesn't come around often.

Additional Details:

Year Built	2004
Lot Acres	2
Lot Dimensions	202x405x52.8x597
Garage Stalls	3
School District	181
Taxes	\$2,138
Taxes with Assessments	\$2,204
Tax Year	2025

Additional Features:

Heat: Forced Air, Fireplace(s), Wood Stove
Listed By: Ashworth Real Estate

Affinity Real Estate Inc. participates in the Regional Multiple Listing Service of Minnesota, Inc Broker Reciprocity (sm) program, allowing us to display other broker's listings on our website. All properties are subject to prior sale, change or withdrawal.



Call Affinity Real Estate

218-237-3333

info@affinityrealestate.com



Affinity Real Estate - 600 Park Avenue South - Park Rapids MN 56470



website: www.AffinityRealEstate.com | email: info@affinityrealestate.com | office: 218-237-3333 | fax: 218-237-3377

Affinity
REAL ESTATE INC

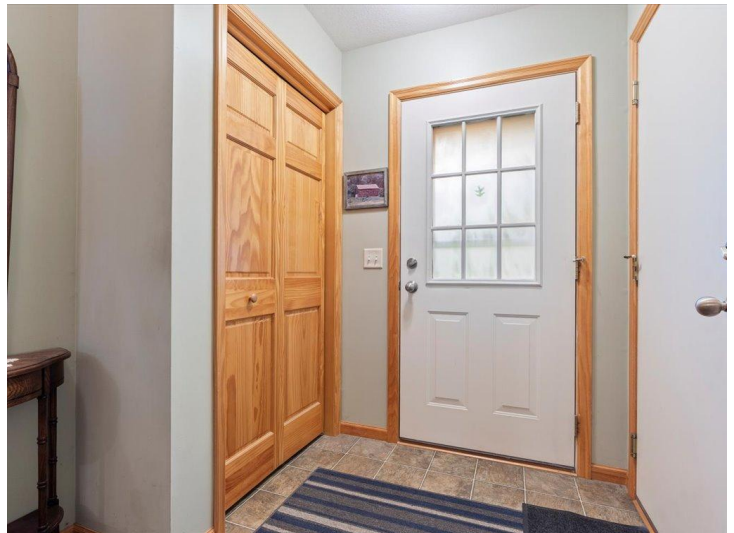
\$549,900
MLS 7091388 Lake Home
11815 Maplewood Drive
Brainerd MN 56401



website: www.AffinityRealEstate.com | email: info@affinityrealestate.com | office: 218-237-3333 | fax:218-237-3377

Affinity
REAL ESTATE INC

\$549,900
MLS 7091388 Lake Home
11815 Maplewood Drive
Brainerd MN 56401



website: www.AffinityRealEstate.com | email: info@affinityrealestate.com | office: 218-237-3333 | fax:218-237-3377

Affinity
REAL ESTATE INC

\$549,900
MLS 7091388 Lake Home
11815 Maplewood Drive
Brainerd MN 56401



website: www.AffinityRealEstate.com | email: info@affinityrealestate.com | office: 218-237-3333 | fax:218-237-3377

Affinity
REAL ESTATE INC

\$549,900
MLS 7091388 Lake Home
11815 Maplewood Drive
Brainerd MN 56401



website: www.AffinityRealEstate.com | email: info@affinityrealestate.com | office: 218-237-3333 | fax:218-237-3377

Affinity
REAL ESTATE INC

\$549,900
MLS 7091388 Lake Home
11815 Maplewood Drive
Brainerd MN 56401



website: www.AffinityRealEstate.com | email: info@affinityrealestate.com | office: 218-237-3333 | fax:218-237-3377



\$549,900
MLS 7091388 Lake Home
11815 Maplewood Drive
Brainerd MN 56401



website: www.AffinityRealEstate.com | email: info@affinityrealestate.com | office: 218-237-3333 | fax:218-237-3377



\$549,900
MLS 7091388 Lake Home
11815 Maplewood Drive
Brainerd MN 56401



website: www.AffinityRealEstate.com | email: info@affinityrealestate.com | office: 218-237-3333 | fax:218-237-3377

Affinity
REAL ESTATE INC

\$549,900
MLS 7091388 Lake Home
11815 Maplewood Drive
Brainerd MN 56401



website: www.AffinityRealEstate.com | email: info@affinityrealestate.com | office: 218-237-3333 | fax: 218-237-3377



\$549,900
MLS 7091388 Lake Home
11815 Maplewood Drive
Brainerd MN 56401