



MLS 7091462 Lake Home

\$279,900

432 sq ft
1 bedrooms
1 baths

190 2nd Street
Laporte MN 56461

Waterfront: Garfield

Status: Active

Description:

Endless Potential on Garfield Lake!

Discover an exceptional opportunity to own 8.62± acres across four parcels in Laporte, Minnesota, offering approximately 666 feet of shoreline on beautiful Garfield Lake. Whether you're dreaming of a private family retreat, future development, or investing in a one-of-a-kind lakeside property, this versatile offering is packed with possibilities.


The property includes a seasonal cabin tucked away on a private lakeside parcel, providing a peaceful getaway with stunning water views. The cabin is served by city water and a holding septic tank, making it the perfect place to enjoy Minnesota summers. Also included is a manufactured home situated on a separate parcel with frontage on a city street, featuring the convenience of city water and city sewer. Currently seasonal only properties.

Property Highlights:

- 8.62± acres across four parcels
- Approximately 666 feet of Garfield Lake shoreline
- Seasonal lakeside cabin on a private parcel
- Cabin with city water and holding septic tank
- Manufactured home on separate city-access parcel
- Seasonal manufactured home served by city water and city sewer
- Walking distance to two restaurants, a coffee shop and the grocery store
- City street access
- Excellent opportunity for recreation, investment, or future development
- A truly unique property with endless possibilities!

Additional Details:

Year Built	1945
Lot Acres	0.39
Lot Dimensions	60x280x60x280
School District	306
Taxes	\$599
Taxes with Assessments	\$844

 Listed By: 2026
Counselor Realty Inc of Alex

Additional Features:
Affinity Real Estate Inc. participates in the Regional Multiple Listing Service of Minnesota, Inc Broker Reciprocity (sm) program, allowing us to display other broker's listings on our website. All properties are subject to prior sale, change or withdrawal.

Driving Directions:
From Main Street East, take a left on 1st Ave NE to a right on 2nd St NE to property on left.



Call Affinity Real Estate

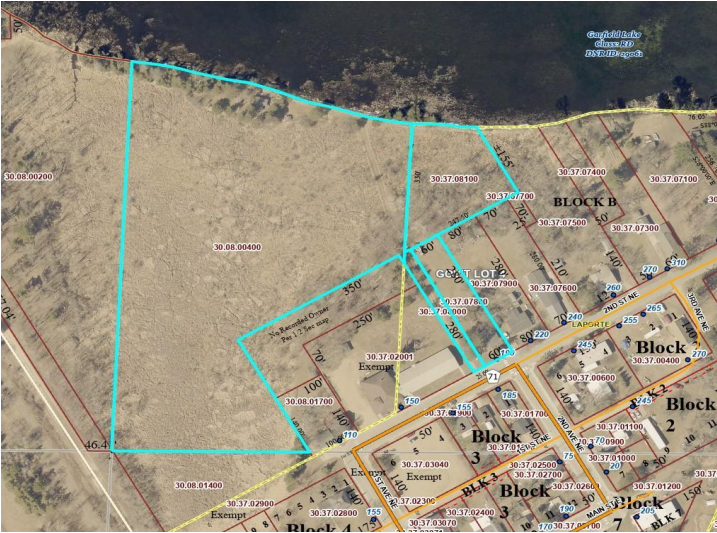
218-237-3333

info@affinityrealestate.com

Basement: Craw Space, Fuel: Propane, Heat: Other, Sewer: Holding Tank, Water: City Water/Connected, Air Conditioning: Window Unit(s)



Affinity Real Estate, 600 Park Avenue South - Park Rapids MN 56470



website: www.AffinityRealEstate.com | email: info@affinityrealestate.com | office: 218-237-3333 | fax:218-237-3377



\$279,900
MLS 7091462 Lake Home
190 2nd Street
Laporte MN 56461



website: www.AffinityRealEstate.com | email: info@affinityrealestate.com | office: 218-237-3333 | fax:218-237-3377

Affinity
REAL ESTATE INC

\$279,900
MLS 7091462 Lake Home
190 2nd Street
Laporte MN 56461



website: www.AffinityRealEstate.com | email: info@affinityrealestate.com | office: 218-237-3333 | fax:218-237-3377



\$279,900
MLS 7091462 Lake Home
190 2nd Street
Laporte MN 56461



website: www.AffinityRealEstate.com | email: info@affinityrealestate.com | office: 218-237-3333 | fax:218-237-3377



\$279,900
MLS 7091462 Lake Home
190 2nd Street
Laporte MN 56461