



MLS 7091532 Residential

\$215,000

1,232 sq ft
2 bedrooms
2 baths

302 Central Avenue
Park Rapids MN 56470

Status: Active

Description:

Welcome to this adorable 2-bedroom, 2-bath gem that's been lovingly updated and is ready for its next owners! From the moment you step inside, you'll appreciate the bright, thoughtful layout and the ease of one-level living, with comfortable spaces that feel both cozy and functional. The spacious primary suite offers a private full bath and a walk-in closet, creating the perfect place to unwind. Outside and you'll find a large back patio and raised garden beds, making the backyard an ideal spot for relaxing, entertaining, or enjoying a little gardening. The detached 20x24 insulated garage offers plenty of room for parking, storage, or a workshop, and the .24-acre lot provides you plenty of room to spread out without the upkeep of a larger property. The big-ticket updates have already been taken care of, including a new furnace with central A/C, water heater, washer and dryer, refrigerator, kitchen sink, and updated flooring—all completed within the last few years. It's the kind of home where you can simply move in and start enjoying. Located in a great neighborhood, you'll love being just minutes from downtown, the Heartland Trail, schools, shopping, parks, and grocery stores. Whether you're looking for your first home, a place to downsize, or an easy-to-maintain property full of charm and updates, this one checks all the boxes!

Additional Details:

Year Built	2002
Lot Acres	0.24
Lot Dimensions	64.2'x153.95'x72.55'x62.22'x8.44'x95'
Garage Stalls	2
School District	309
Taxes	\$1,516
Taxes with Assessments	\$1,516
Tax Year	2026

Additional Features:

Basement: Block, Crawl Space **Fuel:** Natural Gas **Garage:** 2 **Heat:** Forced Air **Sewer:** City Sewer/Connected **Water:** City Water/Connected **Air Conditioning:** Central Air

Driving Directions:

From the HWY 71/34 intersection: head east on HWY 34 for .5 miles. Turn right on Central Avenue. Affinity Real Estate will be on the left in .2 miles.



Listed By:
Keller Williams Realty Professionals

Affinity Real Estate Inc. participates in the Regional Multiple Listing Service of Minnesota, Inc Broker Reciprocity (sm) program, allowing us to display other broker's listings on our website. All properties are subject to prior sale, change or withdrawal.



Call Affinity Real Estate

218-237-3333

info@affinityrealestate.com



Affinity Real Estate - 600 Park Avenue South - Park Rapids MN 56470



website: www.AffinityRealEstate.com | email: info@affinityrealestate.com | office: 218-237-3333 | fax:218-237-3377

Affinity
REAL ESTATE INC

\$215,000
MLS 7091532 Residential
302 Central Avenue
Park Rapids MN 56470



website: www.AffinityRealEstate.com | email: info@affinityrealestate.com | office: 218-237-3333 | fax:218-237-3377

Affinity
REAL ESTATE INC

\$215,000
MLS 7091532 Residential
302 Central Avenue
Park Rapids MN 56470



website: www.AffinityRealEstate.com | email: info@affinityrealestate.com | office: 218-237-3333 | fax: 218-237-3377



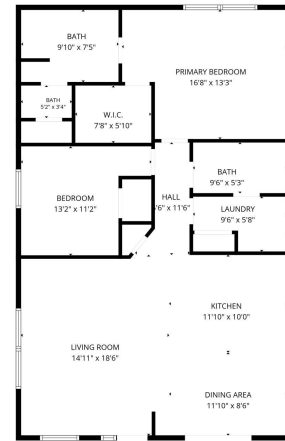
\$215,000
MLS 7091532 Residential
302 Central Avenue
Park Rapids MN 56470



website: www.AffinityRealEstate.com | email: info@affinityrealestate.com | office: 218-237-3333 | fax:218-237-3377



\$215,000
MLS 7091532 Residential
302 Central Avenue
Park Rapids MN 56470



FLOOR PLAN CREATED BY CUBICAGA APP. MEASUREMENTS DEEMED HIGHLY RELIABLE BUT NOT GUARANTEED.

website: www.AffinityRealEstate.com | email: info@affinityrealestate.com | office: 218-237-3333 | fax: 218-237-3377



\$215,000
 MLS 7091532 Residential
 302 Central Avenue
 Park Rapids MN 56470