



MLS 7091642 Land

\$148,600

15.65 Acres
Plat Designed

Tract 1 - TBD State Highway 108
Pelican Rapids MN 56572

Status: Active

Description:

Discover the perfect blend of natural beauty, privacy, and convenience with this exceptional Tract 1 of 5 being offered for sale. This picturesque parcel sits on 15.65+/- acres, featuring gently rolling topography with a mix of mature woods and open pasture, creating an ideal setting for a future home, cabin, or recreational retreat.

The property's diverse landscape includes a stand of hardwoods on the north side of the property that trickles down into a lower meadow area. A small stream and pond border the eastern edge, while an additional stand of thick hardwoods pushes further north providing privacy, year-round scenic appeal, and outstanding wildlife habitat for deer, turkeys, waterfowl, and the occasional pheasant.


Located on State Highway 108, this tract has great access via paved road frontage. Being just a few hundred yards from Lida Greens Golf Course and approximately 1/2 mile west of North Lida Lake, you'll enjoy easy access to golfing, boating, fishing, and countless outdoor activities right at your doorstep while maintaining the peace and quiet of country living. The property is only 5 minutes from Pelican Rapids and within 30 minutes of both Detroit Lakes and Fergus Falls, offering convenient access to shopping, dining, and amenities.

Whether you're looking for a beautiful recreational getaway, a private building site, or an investment in lakes-country land, this tract offers stunning views, abundant wildlife, and an unbeatable location. With tracts ranging from 7-15 acres, additional acreage is available.

Property is part of an unrecorded parcel split, plat just got completed. Available tracts include: MLS#'s 7091642 (Tract 1), 7091678 (Tract 2), 7091701 (Tract 3), 7091706 (Tract 4), and 7091723 (Tract 5).

Additional Details:

Year Built	1856
Lot Acres	15.65
Lot Dimensions	15.65+/- Acres
School District	548
Taxes	\$2,986



Agents \$2,986
 Listed By: 2025
 Midwest Land Group LLC

Additional Features:
 Affinity Real Estate Inc. participates in the Regional Multiple Listing Service of Minnesota, Inc Broker Reciprocity (sm) program, allowing us to display other broker's listings on our website. All properties are subject to prior sale, change or withdrawal.

Driving Directions:



Call Affinity Real Estate
218-237-3333
info@affinityrealestate.com



Affinity Real Estate - 600 Park Avenue South - Park Rapids MN 56470

From Pelican Rapids - take MN-108 headed east out of town for 3.5 miles. Veer right to stay on MN-108 E. Property will be located on the east side of the road about 400 yards past the bend.



website: www.AffinityRealEstate.com | email: info@affinityrealestate.com | office: 218-237-3333 | fax:218-237-3377



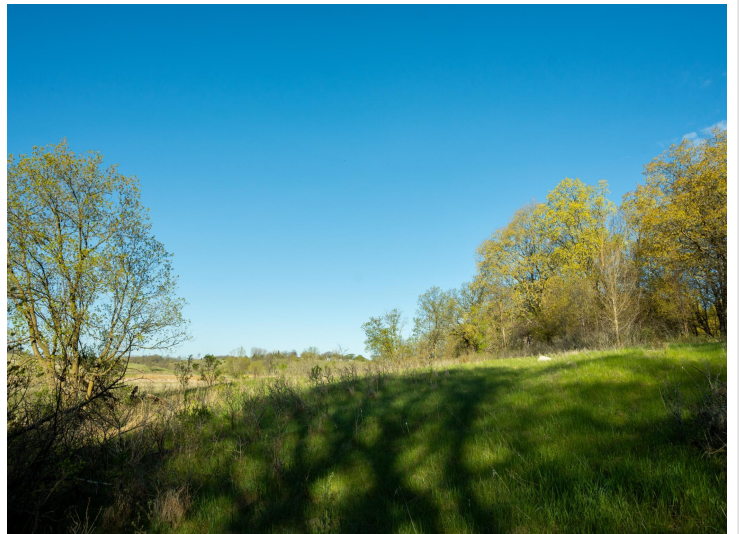
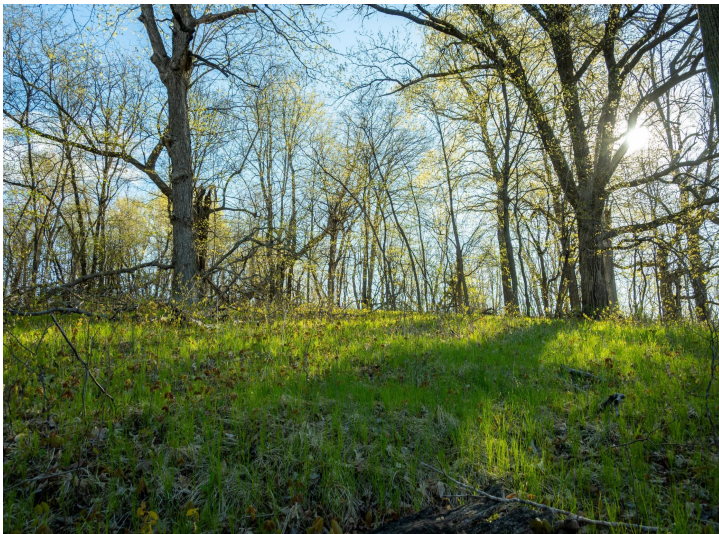
\$148,600
MLS 7091642 Land
Tract 1 - TBD State Highway
108
Pelican Rapids MN 56572



website: www.AffinityRealEstate.com | email: info@affinityrealestate.com | office: 218-237-3333 | fax:218-237-3377

Affinity
REAL ESTATE INC

\$148,600
MLS 7091642 Land
Tract 1 - TBD State Highway
108
Pelican Rapids MN 56572



website: www.AffinityRealEstate.com | email: info@affinityrealestate.com | office: 218-237-3333 | fax:218-237-3377



\$148,600
MLS 7091642 Land
Tract 1 - TBD State Highway
108
Pelican Rapids MN 56572



website: www.AffinityRealEstate.com | email: info@affinityrealestate.com | office: 218-237-3333 | fax:218-237-3377



\$148,600
MLS 7091642 Land
Tract 1 - TBD State Highway
108
Pelican Rapids MN 56572



website: www.AffinityRealEstate.com | email: info@affinityrealestate.com | office: 218-237-3333 | fax:218-237-3377



\$148,600
MLS 7091642 Land
Tract 1 - TBD State Highway
108
Pelican Rapids MN 56572

Aerial Map



website: www.AffinityRealEstate.com | email: info@affinityrealestate.com | office: 218-237-3333 | fax:218-237-3377



\$148,600
MLS 7091642 Land
Tract 1 - TBD State Highway
108
Pelican Rapids MN 56572