



MLS 7091723 Land

\$167,000

15.85 Acres
Plat Designed

Tract 5 - TBD Lida Dr
Pelican Rapids MN 56572

Status: Active

Description:

Tract 5 offers an exceptional opportunity to build your dream home on 15.85+/- acres of diverse, scenic land just a few hundred yards west of North Lida Lake and less than a mile from Lida Greens Golf Course. Tucked into a highly desirable lakes-area setting, this parcel combines privacy, natural beauty, and convenient access to endless recreational opportunities in the surrounding area and at your doorstep.

Access is provided via an approximately 50 foot wide and approximately 70 yard long ingress/egress easement from Lida Dr, leading you into a landscape that blends open pasture, light timber, and two ponds that enhance both the scenery and wildlife habitat. The property is rich with deer, waterfowl, and other native wildlife, making it ideal for nature enthusiasts and outdoor recreation right out your back door.

The land gently transitions from native grasses down to two ponds and slopes back up into a wooded ridgeline, offering potential build sites with varying views and topography. Whether you envision a private estate, recreational retreat, or an investment, Tract 5 delivers a rare combination of water features, elevation, and seclusion in a premier location near North Lida Lake and Lida Greens Golf Course. Additional acreage is available with neighboring tracts ranging from 7-15 acres.

Property is part of an unrecorded parcel split, plat just got completed. Available tracts include: MLS#'s 7091642 (Tract 1), 7091678 (Tract 2), 7091701 (Tract 3), 7091706 (Tract 4), and 7091723 (Tract 5).

Additional Details:

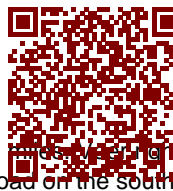
Year Built	1856
Lot Acres	15.85
Lot Dimensions	15.85+/- Acres
School District	548
Taxes	\$2,986
Taxes with Assessments	\$2,986
Tax Year	2025

Additional Features:



Listed By:
Midwest Land Group LLC

Affinity Real Estate Inc. participates in the Regional Multiple Listing Service of Minnesota - Broker Reciprocity (sm) program, allowing us to display other broker's listings on our website. All properties are subject to prior sale, change or withdrawal.



Call Affinity Real Estate

218-237-3333

info@affinityrealestate.com



ke a left headed west on

Affinity Real Estate - 600 Park Avenue South - Park Rapids MN 56470



website: www.AffinityRealEstate.com | email: info@affinityrealestate.com | office: 218-237-3333 | fax:218-237-3377



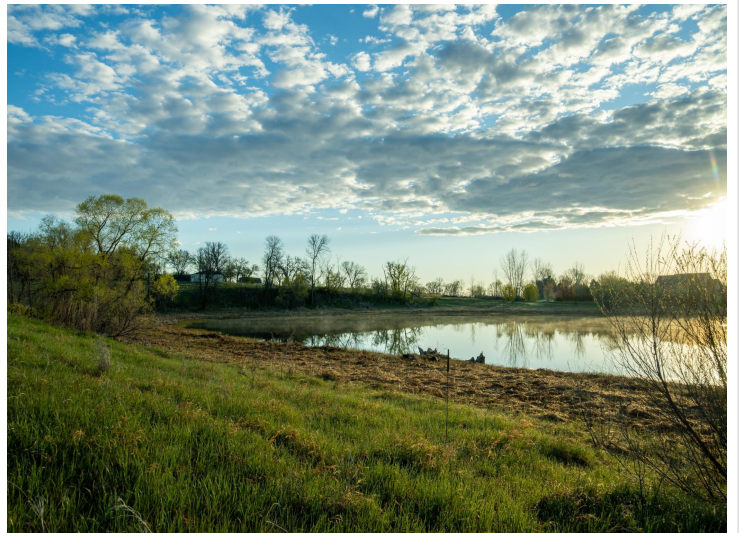
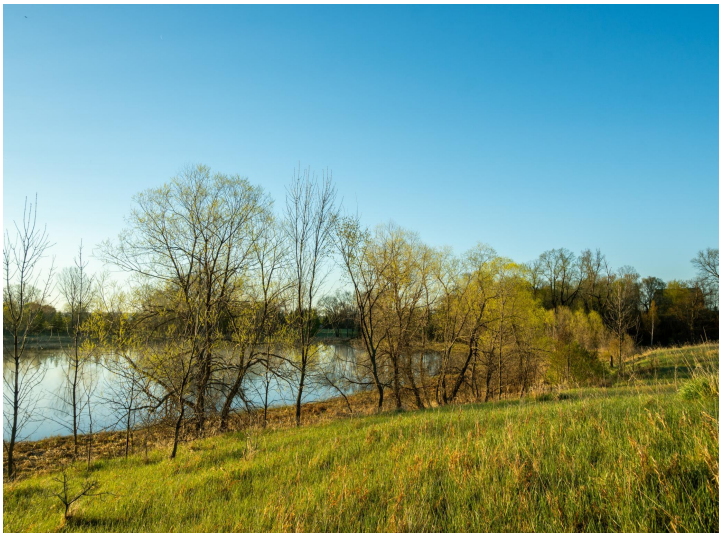
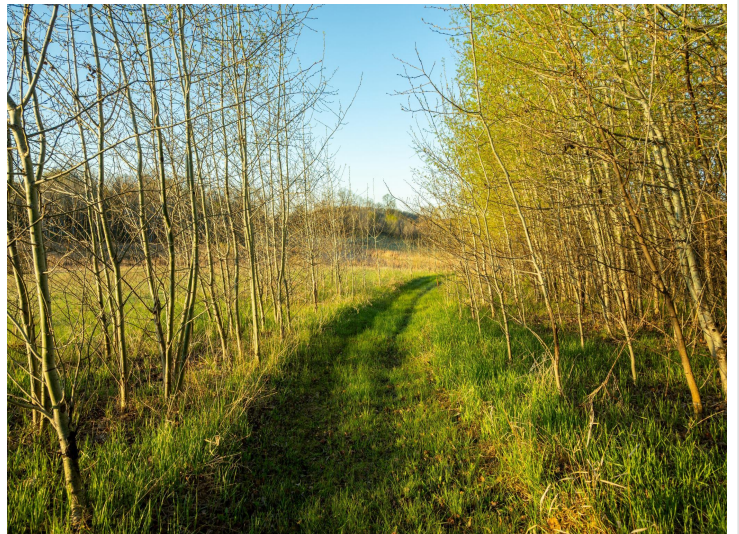
\$167,000
MLS 7091723 Land
Tract 5 - TBD Lida Dr
Pelican Rapids MN 56572



website: www.AffinityRealEstate.com | email: info@affinityrealestate.com | office: 218-237-3333 | fax:218-237-3377

Affinity
REAL ESTATE INC

\$167,000
MLS 7091723 Land
Tract 5 - TBD Lida Dr
Pelican Rapids MN 56572



website: www.AffinityRealEstate.com | email: info@affinityrealestate.com | office: 218-237-3333 | fax:218-237-3377



\$167,000
MLS 7091723 Land
Tract 5 - TBD Lida Dr
Pelican Rapids MN 56572



Aerial Map



website: www.AffinityRealEstate.com | email: info@affinityrealestate.com | office: 218-237-3333 | fax:218-237-3377



\$167,000
MLS 7091723 Land
Tract 5 - TBD Lida Dr
Pelican Rapids MN 56572