



MLS 7091733 Land

\$149,000

7.33 Acres
Finished Lot(s)

27764 Elm Ln
Detroit Lakes MN 56501

Status: Active

Description:

BUILD-READY ACREAGE & 480 ACRES OF STATE LAND! Set on 7.33 Acres of Serene Privacy just 7 minutes South of Detroit Lakes, this Exceptional Lot offers the perfect blend of Convenience, Natural Beauty, and Build-Ready Improvements. With nearly all paved roads providing a straight-shot commute into Detroit Lakes, the location is ideal for your future Dream Home, Hunting Base Camp, or Weekend Escape.

The property features Mature Tree Coverage, a Picture-Perfect Build Site Ready for Construction, plus major improvements already in place, including a Driveway/Approach, Power On Site, a Drilled Well, and a Compliant Septic System rated for up to 5 Bedrooms. A 24x32 Detached Garage with Power adds excellent storage and functionality from day one, whether you're preparing to build or simply looking for a private retreat.

A true standout is the property's direct connection to an incredible 480 Acres of Public State Land, offering access to Snowmobile & Hiking Trails, Hunting Opportunities, and abundant Wildlife right out your back door. Whether you're searching for a Build-Ready Homesite with an Easy Commute, a Peaceful Escape surrounded by nature, or a base camp for Year-Round Recreation, this property is sure to impress!

Additional Details:

Lot Acres	7.33
Lot Dimensions	685 x 670 x 592 x 508
School District	22
Taxes	\$474
Taxes with Assessments	\$494
Tax Year	2026

Additional Features:

Driving Directions:

From S Shore Dr in Detroit Lakes, head south on 280th Ave for 3.7 Miles, then turn left onto Elm Ln. Continue around the bend, and the property will be marked on the left-hand side.



Listed By:
Jack Chivers Realty

Affinity Real Estate Inc. participates in the Regional Multiple Listing Service of Minnesota, Inc Broker Reciprocity (sm) program, allowing us to display other broker's listings on our website. All properties are subject to prior sale, change or withdrawal.



Call Affinity Real Estate

218-237-3333

info@affinityrealestate.com



Affinity Real Estate - 600 Park Avenue South - Park Rapids MN 56470



website: www.AffinityRealEstate.com | email: info@affinityrealestate.com | office: 218-237-3333 | fax:218-237-3377



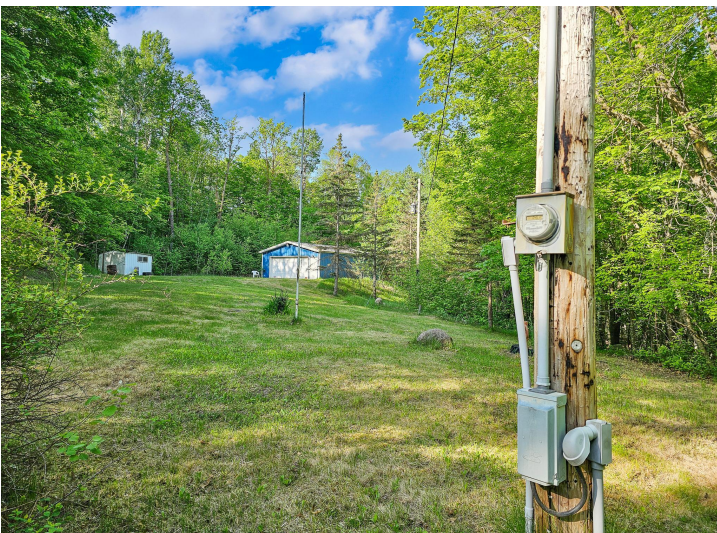
\$149,000
MLS 7091733 Land
27764 Elm Ln
Detroit Lakes MN 56501



website: www.AffinityRealEstate.com | email: info@affinityrealestate.com | office: 218-237-3333 | fax:218-237-3377



\$149,000
MLS 7091733 Land
27764 Elm Ln
Detroit Lakes MN 56501



website: www.AffinityRealEstate.com | email: info@affinityrealestate.com | office: 218-237-3333 | fax:218-237-3377



\$149,000
MLS 7091733 Land
27764 Elm Ln
Detroit Lakes MN 56501



website: www.AffinityRealEstate.com | email: info@affinityrealestate.com | office: 218-237-3333 | fax:218-237-3377

Affinity
REAL ESTATE INC

\$149,000
MLS 7091733 Land
27764 Elm Ln
Detroit Lakes MN 56501



website: www.AffinityRealEstate.com | email: info@affinityrealestate.com | office: 218-237-3333 | fax:218-237-3377



\$149,000
MLS 7091733 Land
27764 Elm Ln
Detroit Lakes MN 56501



website: www.AffinityRealEstate.com | email: info@affinityrealestate.com | office: 218-237-3333 | fax:218-237-3377



\$149,000
MLS 7091733 Land
27764 Elm Ln
Detroit Lakes MN 56501



website: www.AffinityRealEstate.com | email: info@affinityrealestate.com | office: 218-237-3333 | fax:218-237-3377



\$149,000
MLS 7091733 Land
27764 Elm Ln
Detroit Lakes MN 56501