



MLS 7091831 Residential

\$264,567

1,560 sq ft
3 bedrooms
2 baths

1108 Irvine Avenue
Bemidji MN 56601

Status: Active

Description:

Charming in-town walk-out offering 3+ bedrooms and 1.5 baths, thoughtfully updated with central air, natural gas heat, a durable metal roof, maintenance-free siding, a roomy deck that leads to a cozy fenced yard that features a fire pit area and raised garden beds, stainless steel appliances, a detached single-car garage, and newer windows and exterior doors!

Additional Details:

Year Built	1970
Lot Acres	0.1
Lot Dimensions	50x90
Garage Stalls	1
School District	31
Taxes	\$1,361
Taxes with Assessments	\$1,361
Tax Year	2026

Additional Features:

Basement: Full **Fuel:** Natural Gas **Garage:** 1 **Heat:** Forced Air **Sewer:** City Sewer/Connected **Water:** City Water/Connected **Air Conditioning:** Central Air

Driving Directions:

1108 Irvine Ave NW



Listed By:
Realty Experts, LLC

Affinity Real Estate Inc. participates in the Regional Multiple Listing Service of Minnesota, Inc Broker Reciprocity (sm) program, allowing us to display other broker's listings on our website. All properties are subject to prior sale, change or withdrawal.



Call Affinity Real Estate

218-237-3333

info@affinityrealestate.com



Affinity Real Estate - 600 Park Avenue South - Park Rapids MN 56470



website: www.AffinityRealEstate.com | email: info@affinityrealestate.com | office: 218-237-3333 | fax: 218-237-3377

Affinity
REAL ESTATE INC

\$264,567
MLS 7091831 Residential
1108 Irvine Avenue
Bemidji MN 56601



website: www.AffinityRealEstate.com | email: info@affinityrealestate.com | office: 218-237-3333 | fax:218-237-3377

Affinity
REAL ESTATE INC

\$264,567
MLS 7091831 Residential
1108 Irvine Avenue
Bemidji MN 56601



website: www.AffinityRealEstate.com | email: info@affinityrealestate.com | office: 218-237-3333 | fax: 218-237-3377

Affinity
REAL ESTATE INC

\$264,567
MLS 7091831 Residential
1108 Irvine Avenue
Bemidji MN 56601



website: www.AffinityRealEstate.com | email: info@affinityrealestate.com | office: 218-237-3333 | fax:218-237-3377

Affinity
REAL ESTATE INC

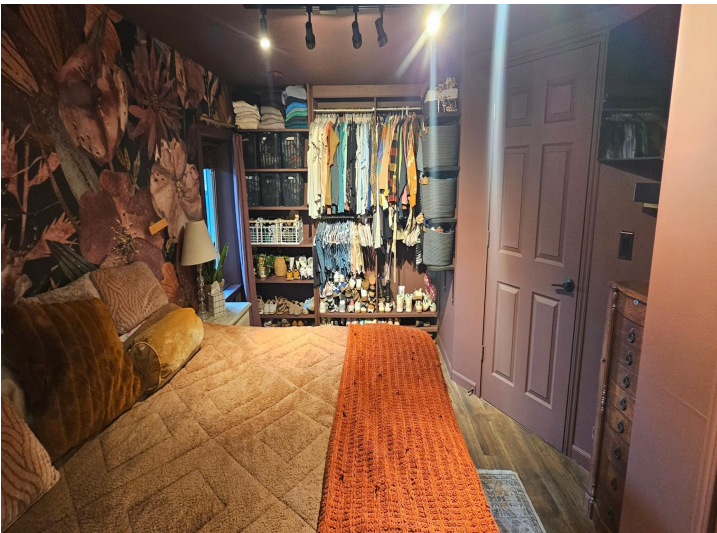
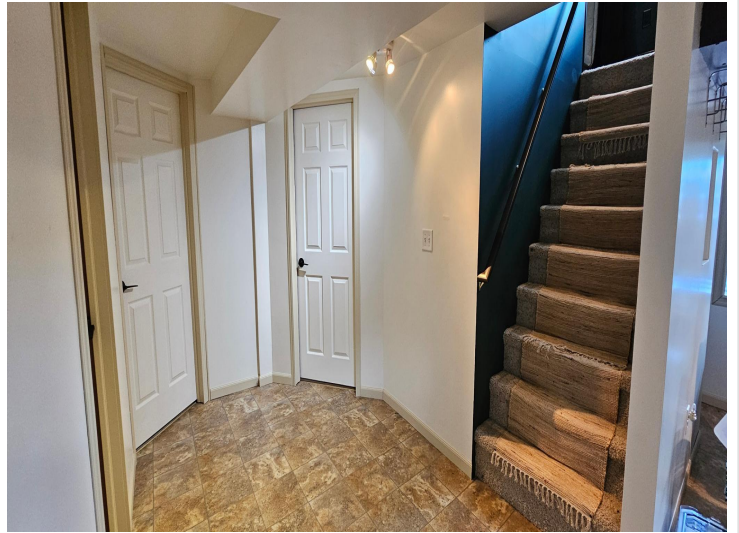
\$264,567
MLS 7091831 Residential
1108 Irvine Avenue
Bemidji MN 56601



website: www.AffinityRealEstate.com | email: info@affinityrealestate.com | office: 218-237-3333 | fax:218-237-3377



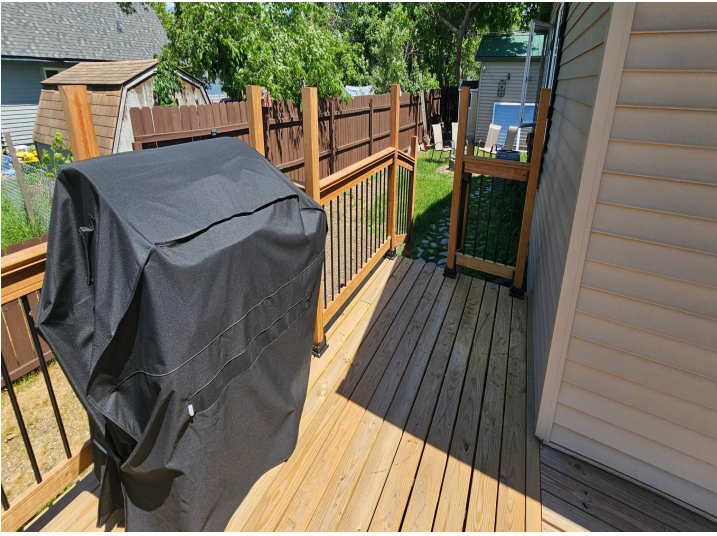
\$264,567
MLS 7091831 Residential
1108 Irvine Avenue
Bemidji MN 56601



website: www.AffinityRealEstate.com | email: info@affinityrealestate.com | office: 218-237-3333 | fax:218-237-3377

Affinity
REAL ESTATE INC

\$264,567
MLS 7091831 Residential
1108 Irvine Avenue
Bemidji MN 56601



website: www.AffinityRealEstate.com | email: info@affinityrealestate.com | office: 218-237-3333 | fax:218-237-3377

Affinity
REAL ESTATE INC

\$264,567
MLS 7091831 Residential
1108 Irvine Avenue
Bemidji MN 56601



website: www.AffinityRealEstate.com | email: info@affinityrealestate.com | office: 218-237-3333 | fax: 218-237-3377

Affinity
REAL ESTATE INC

\$264,567
MLS 7091831 Residential
1108 Irvine Avenue
Bemidji MN 56601



website: www.AffinityRealEstate.com | email: info@affinityrealestate.com | office: 218-237-3333 | fax:218-237-3377



\$264,567
MLS 7091831 Residential
1108 Irvine Avenue
Bemidji MN 56601