



MLS 7091905 Lake Home

\$395,000

896 sq ft
2 bedrooms
1 baths

23546 County Road 4
Nisswa MN 56468

Waterfront: Edward

Status: Coming Soon

Description:

I've spent decades watching the sunrise sparkle across the waters of Lake Edward, welcoming generations of families through my door and filling my rooms with laughter, stories, and unforgettable memories. I'm a cozy 2-bedroom, year-round retreat, offering one-level living and an open floor plan that makes gathering feel effortless. My walls of lakeside windows invite the outdoors in, filling every day with breathtaking views and natural light, while my spacious entry offers plenty of room to kick off your shoes and head straight to the lake. Step outside and you'll discover one of my greatest treasures...a beautiful sugar sand beach where little feet can play, afternoons can be spent swimming and evenings can end around a lakeside fire beneath the stars. I even come with a detached 2-stall garage, providing plenty of room for your vehicles, lake toys and weekend projects. I've proudly held onto my vintage charm but also know I have incredible potential. Whether you choose to preserve the character that's made me special for years or transform me into the modern lake retreat you've always envisioned, I am ready for my next chapter. If you've been searching for a place where memories are made and traditions begin, I may just be the cabin you've been waiting for.

Additional Details:

Year Built	1960
Lot Acres	14659
Lot Dimensions	92 x 161x125 x 123
Garage Stalls	2
School District	181
Taxes	\$1,998
Taxes with Assessments	\$1,998
Tax Year	2026

Additional Features:

Fuel: Natural Gas **Heat:** Baseboard, Fireplace(s), Other

Driving Directions:

FROM HOLIDAY GAS STATION STOPLIGHTS IN NISSWA @ THE JCT. OF 13 & 371, GO EAST ON 13 FOR 5.8 MILES TO, RIGHT ON CTY RD. 4 FOR 0.5 MILES TO SIGN & FIRE# 23546 ON LEF



Listed By:
Kurilla Real Estate LTD

Affinity Real Estate Inc. participates in the Regional Multiple Listing Service of Minnesota, Inc Broker Reciprocity (sm) program, allowing us to display other broker's listings on our website. All properties are subject to prior sale, change or withdrawal.



Call Affinity Real Estate

218-237-3333

info@affinityrealestate.com



Affinity Real Estate - 600 Park Avenue South - Park Rapids MN 56470



website: www.AffinityRealEstate.com | email: info@affinityrealestate.com | office: 218-237-3333 | fax:218-237-3377

Affinity
REAL ESTATE INC

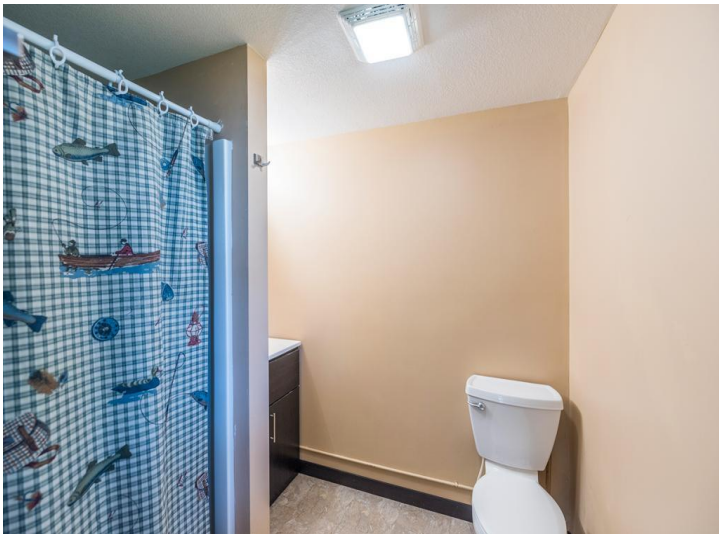
\$395,000
MLS 7091905 Lake Home
23546 County Road 4
Nisswa MN 56468



website: www.AffinityRealEstate.com | email: info@affinityrealestate.com | office: 218-237-3333 | fax:218-237-3377

Affinity
REAL ESTATE INC

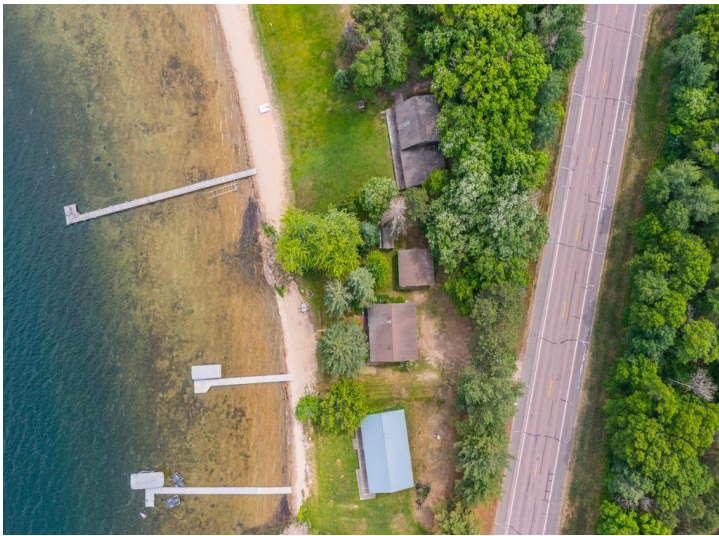
\$395,000
MLS 7091905 Lake Home
23546 County Road 4
Nisswa MN 56468



website: www.AffinityRealEstate.com | email: info@affinityrealestate.com | office: 218-237-3333 | fax:218-237-3377

Affinity
REAL ESTATE INC

\$395,000
MLS 7091905 Lake Home
23546 County Road 4
Nisswa MN 56468



website: www.AffinityRealEstate.com | email: info@affinityrealestate.com | office: 218-237-3333 | fax:218-237-3377



\$395,000
MLS 7091905 Lake Home
23546 County Road 4
Nisswa MN 56468



website: www.AffinityRealEstate.com | email: info@affinityrealestate.com | office: 218-237-3333 | fax:218-237-3377



\$395,000
MLS 7091905 Lake Home
23546 County Road 4
Nisswa MN 56468