



MLS 7092005 Land

**\$42,000**

2.45 Acres  
Raw Land

TBD2 County 2  
Nevis MN 56467

Status: Pending

**Description:**

Build your Northwoods getaway on this beautiful 2.45-acre lot just north of Nevis. Conveniently located with easy access to area lakes, trails, and all the amenities of town, this property offers the perfect balance of privacy and accessibility. The pine-studded lot provides a scenic setting, while the level terrain offers an excellent building site for your future home, cabin, or retreat. Whether you're looking to build now or invest for the future, this is a property worth a closer look.

**Additional Details:**

Lot Acres	2.45
Lot Dimensions	223x478
School District	308
Taxes	\$196
Taxes with Assessments	\$196
Tax Year	2025

**Additional Features:**

**Driving Directions:**

From 34/71 in Park Rapids, East on 34 to a left on Bunyan Trail Dr to property.



Listed By:  
Wolff & Simon Real Estate

Affinity Real Estate Inc. participates in the Regional Multiple Listing Service of Minnesota, Inc Broker Reciprocity (sm) program, allowing us to display other broker's listings on our website. All properties are subject to prior sale, change or withdrawal.



Call Affinity Real Estate

**218-237-3333**

[info@affinityrealestate.com](mailto:info@affinityrealestate.com)



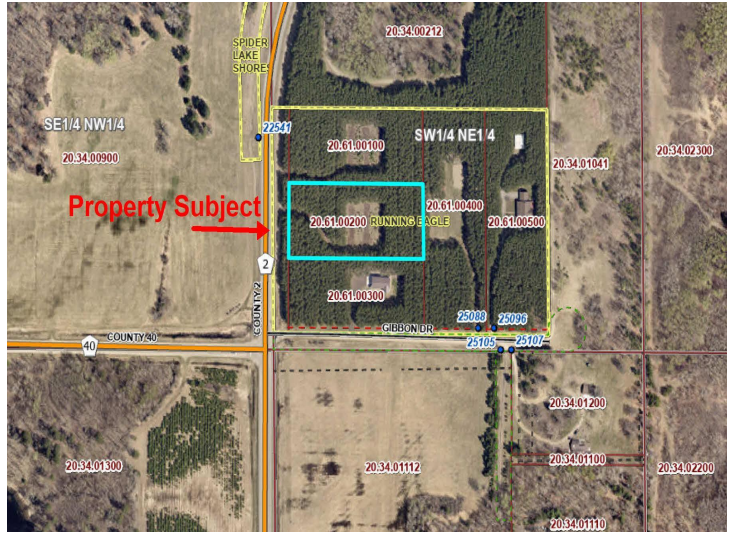
Affinity Real Estate - 600 Park Avenue South - Park Rapids MN 56470



website: [www.AffinityRealEstate.com](http://www.AffinityRealEstate.com) | email: [info@affinityrealestate.com](mailto:info@affinityrealestate.com) | office: 218-237-3333 | fax:218-237-3377



**\$42,000**  
MLS 7092005 Land  
TBD2 County 2  
Nevis MN 56467



website: [www.AffinityRealEstate.com](http://www.AffinityRealEstate.com) | email: [info@affinityrealestate.com](mailto:info@affinityrealestate.com) | office: 218-237-3333 | fax:218-237-3377



**\$42,000**  
MLS 7092005 Land  
TBD2 County 2  
Nevis MN 56467