



MLS 7092324 Residential

\$299,900

1,182 sq ft
3 bedrooms
1 baths

1378 Latoka Drive
Alexandria MN 56308

Status: Coming Soon

Description:

Enjoy easy living in this move-in ready 3-bedroom patio home built in 2020, located in a fantastic neighborhood, across the road from Lake Latoka, on a spacious .68-acre lot. Featuring in-floor heat, all new appliances, and a versatile bonus 4th room perfect for an office, hobby space, or guest room, this home offers comfort and flexibility. With plenty of room to expand, put up an outbuilding, or create your dream outdoor space, the possibilities are endless. The fantastic location and modern amenities makes this property a must-see!

Additional Details:

Year Built	2020
Lot Acres	0.68
Lot Dimensions	100 293 100 297
Garage Stalls	2
School District	206
Taxes	\$2,684
Taxes with Assessments	\$2,684
Tax Year	2026

Additional Features:

Fuel: Electric **Heat:** In-Floor Heating

Driving Directions:

From Alexandria, take CoRd 82 NW towards Garfield. Turn left onto Latoka Dr S and then right onto Latoka Beach Rd NW. Then turn right onto W Latoka Dr SW. Home will be on the right hand side.



Listed By:
Kvale Real Estate

Affinity Real Estate Inc. participates in the Regional Multiple Listing Service of Minnesota, Inc Broker Reciprocity (sm) program, allowing us to display other broker's listings on our website. All properties are subject to prior sale, change or withdrawal.



Call Affinity Real Estate

218-237-3333

info@affinityrealestate.com



Affinity Real Estate - 600 Park Avenue South - Park Rapids MN 56470



website: www.AffinityRealEstate.com | email: info@affinityrealestate.com | office: 218-237-3333 | fax:218-237-3377



\$299,900
MLS 7092324 Residential
1378 Latoka Drive
Alexandria MN 56308



website: www.AffinityRealEstate.com | email: info@affinityrealestate.com | office: 218-237-3333 | fax:218-237-3377



\$299,900
MLS 7092324 Residential
1378 Latoka Drive
Alexandria MN 56308



website: www.AffinityRealEstate.com | email: info@affinityrealestate.com | office: 218-237-3333 | fax:218-237-3377

Affinity
REAL ESTATE INC

\$299,900
MLS 7092324 Residential
1378 Latoka Drive
Alexandria MN 56308



website: www.AffinityRealEstate.com | email: info@affinityrealestate.com | office: 218-237-3333 | fax:218-237-3377

Affinity
REAL ESTATE INC

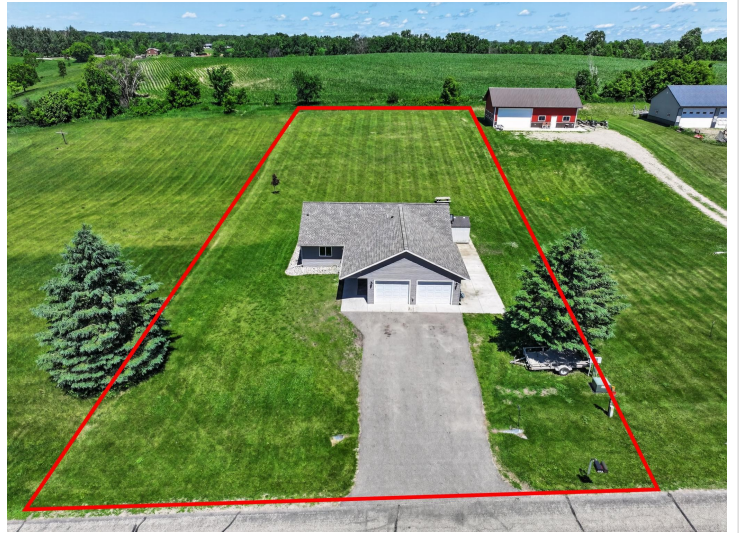
\$299,900
MLS 7092324 Residential
1378 Latoka Drive
Alexandria MN 56308



website: www.AffinityRealEstate.com | email: info@affinityrealestate.com | office: 218-237-3333 | fax:218-237-3377

Affinity
REAL ESTATE INC

\$299,900
MLS 7092324 Residential
1378 Latoka Drive
Alexandria MN 56308



website: www.AffinityRealEstate.com | email: info@affinityrealestate.com | office: 218-237-3333 | fax:218-237-3377



\$299,900
MLS 7092324 Residential
1378 Latoka Drive
Alexandria MN 56308