



MLS 7092486 Lake Home

\$1,070,000

2,760 sq ft
4 bedrooms
4 baths

10928 Lake Ida Lane
Lake Park MN 56554

Waterfront: Ida

Status: Active

Description:

LAKE IDA: Amazing property on Lake Ida. This four bed, four bath, 2,700 square foot home is situated on a huge, level, 150 X 300 foot lot on the finest beach on Ida. Over 15,000 square feet, of level yard space between the home and lake. Enjoy fantastic lake views from the spacious lower-level family room, patio and upper level bedrooms. The 20 by 24 foot sunroom provides space to entertain on cool days. A 26 by 30 foot attached garage provides space for the vehicles and toys. Storage sheds on both the beach and side yard are perfect for the water toys and yard equipment. Located less than 45 minutes from the FM Metro area, and minutes away from all the great restaurants and pubs in the Cormorant area make this an amazing find.

Additional Details:

Year Built	1977
Lot Acres	1.23
Lot Dimensions	150 x 300
Garage Stalls	2
School District	2889
Taxes	\$4,146
Taxes with Assessments	\$4,684
Tax Year	2026

Additional Features:

Basement: Unfinished **Fuel:** Electric, Propane **Garage:** 2 **Heat:** Baseboard, Dual Fuel/Off Peak, Fireplace(s), Space Heater **Sewer:** Tank with Drainage Field **Water:** 4-Inch Submersible, Drilled, Private, Well **Air Conditioning:** Central Air

Driving Directions:

From Becker #5 and East Lake Ida Lane: South on E Lake Ida Lane to property.



Listed By:
Cormorant Realty

Affinity Real Estate Inc. participates in the Regional Multiple Listing Service of Minnesota, Inc Broker Reciprocity (sm) program, allowing us to display other broker's listings on our website. All properties are subject to prior sale, change or withdrawal.



Call Affinity Real Estate

218-237-3333

info@affinityrealestate.com



Affinity Real Estate - 600 Park Avenue South - Park Rapids MN 56470



website: www.AffinityRealEstate.com | email: info@affinityrealestate.com | office: 218-237-3333 | fax:218-237-3377



\$1,070,000
MLS 7092486 Lake Home
10928 Lake Ida Lane
Lake Park MN 56554



website: www.AffinityRealEstate.com | email: info@affinityrealestate.com | office: 218-237-3333 | fax:218-237-3377

Affinity
REAL ESTATE INC

\$1,070,000
MLS 7092486 Lake Home
10928 Lake Ida Lane
Lake Park MN 56554



website: www.AffinityRealEstate.com | email: info@affinityrealestate.com | office: 218-237-3333 | fax:218-237-3377



\$1,070,000
MLS 7092486 Lake Home
10928 Lake Ida Lane
Lake Park MN 56554



website: www.AffinityRealEstate.com | email: info@affinityrealestate.com | office: 218-237-3333 | fax:218-237-3377



\$1,070,000
MLS 7092486 Lake Home
10928 Lake Ida Lane
Lake Park MN 56554



website: www.AffinityRealEstate.com | email: info@affinityrealestate.com | office: 218-237-3333 | fax:218-237-3377

Affinity
REAL ESTATE INC

\$1,070,000
MLS 7092486 Lake Home
10928 Lake Ida Lane
Lake Park MN 56554



website: www.AffinityRealEstate.com | email: info@affinityrealestate.com | office: 218-237-3333 | fax:218-237-3377



\$1,070,000
MLS 7092486 Lake Home
10928 Lake Ida Lane
Lake Park MN 56554



website: www.AffinityRealEstate.com | email: info@affinityrealestate.com | office: 218-237-3333 | fax:218-237-3377



\$1,070,000
MLS 7092486 Lake Home
10928 Lake Ida Lane
Lake Park MN 56554



website: www.AffinityRealEstate.com | email: info@affinityrealestate.com | office: 218-237-3333 | fax:218-237-3377

Affinity
REAL ESTATE INC

\$1,070,000
MLS 7092486 Lake Home
10928 Lake Ida Lane
Lake Park MN 56554



website: www.AffinityRealEstate.com | email: info@affinityrealestate.com | office: 218-237-3333 | fax:218-237-3377

Affinity
REAL ESTATE INC

\$1,070,000
MLS 7092486 Lake Home
10928 Lake Ida Lane
Lake Park MN 56554



website: www.AffinityRealEstate.com | email: info@affinityrealestate.com | office: 218-237-3333 | fax:218-237-3377



\$1,070,000
MLS 7092486 Lake Home
10928 Lake Ida Lane
Lake Park MN 56554



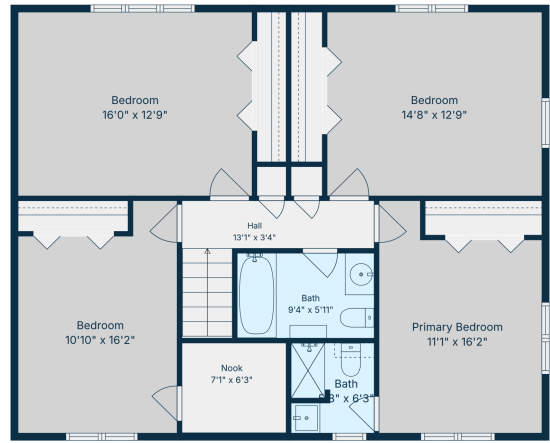
website: www.AffinityRealEstate.com | email: info@affinityrealestate.com | office: 218-237-3333 | fax:218-237-3377



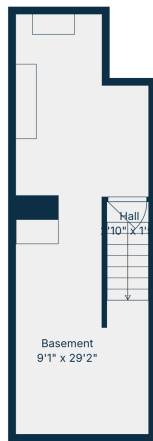
\$1,070,000
MLS 7092486 Lake Home
10928 Lake Ida Lane
Lake Park MN 56554



Floor Plan Created By Cubicasa App. Measurements Deemed Highly Reliable But Not Guaranteed.



Floor Plan Created By Cubicasa App. Measurements Deemed Highly Reliable But Not Guaranteed.



Floor Plan Created By Cubicasa App. Measurements Deemed Highly Reliable But Not Guaranteed.

website: www.AffinityRealEstate.com | email: info@affinityrealestate.com | office: 218-237-3333 | fax: 218-237-3377



\$1,070,000
 MLS 7092486 Lake Home
 10928 Lake Ida Lane
 Lake Park MN 56554