



MLS 7092502 Land

\$1

154.83 Acres

Raw Land

TBD County Highway 36

Frazee MN 56544

Status: Active

Description:

156+/- acres of beautiful Minnesota countryside near Wolf Lake in rural Frazee, Becker County! This exceptional property offers a diverse mix of wooded land, tillable acres, and willows with the Redeye River flowing through — a true sportsman's paradise with outstanding hunting and recreational potential. Offered in 3 parcels via online-only auction opening June 26th and closing June 30th at 12:00 PM.

Parcel D (Lot 1) — 8.11+/- Acres w/ Homestead: See MLS#7085021 for the residential listing information.

Parcel C (Lot 2) — 66.01+/- Acres: Mixed-use land offering excellent hunting, recreational use, and future building possibilities.

Parcel A (Lot 3) — 80.05+/- Acres: A versatile combination of tillable acreage, hunting and recreational land, with additional building potential.

Whether you're looking for a country homestead, a hunting retreat, farmland, or all the above — this property has it all. Don't miss your opportunity to own a piece of rural Minnesota! Visit out auction site for online bidding.

Additional Details:

Year Built	1989
Lot Acres	154.83
Lot Dimensions	154.83 acres
School District	23
Taxes	\$1,250
Taxes with Assessments	\$1,250
Tax Year	2026

Additional Features:

Driving Directions:

From Frazee head East on State Hwy 87 for 13.5 miles, turn left and head North on 460th Ave and go 3.1 miles, turn right on Co Rd 151 then left on Co Hwy 36 and follow to the property on the right side. From Wolf Lake go west on Co Hwy 36 for 4 miles to the property on the right side.



Listed By:
Counselor Realty Detroit Lakes

Affinity Real Estate Inc. participates in the Regional Multiple Listing Service of Minnesota, Inc Broker Reciprocity (sm) program, allowing us to display other broker's listings on our website. All properties are subject to prior sale, change or withdrawal.



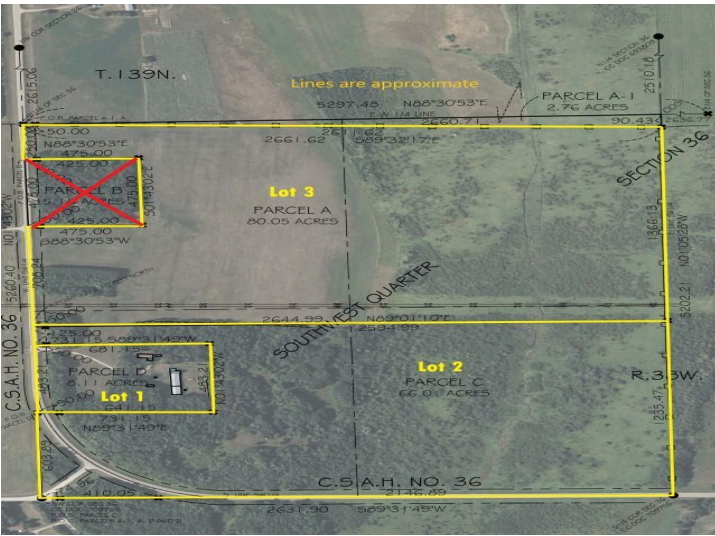
Call Affinity Real Estate

218-237-3333

info@affinityrealestate.com



Affinity Real Estate - 600 Park Avenue South - Park Rapids MN 56470



website: www.AffinityRealEstate.com | email: info@affinityrealestate.com | office: 218-237-3333 | fax: 218-237-3377



\$1
 MLS 7092502 Land
 TBD County Highway 36
 Frazee MN 56544



website: www.AffinityRealEstate.com | email: info@affinityrealestate.com | office: 218-237-3333 | fax:218-237-3377

Affinity
REAL ESTATE INC

\$1
MLS 7092502 Land
TBD County Highway 36
Frazee MN 56544



website: www.AffinityRealEstate.com | email: info@affinityrealestate.com | office: 218-237-3333 | fax:218-237-3377



\$1
MLS 7092502 Land
TBD County Highway 36
Frazee MN 56544



website: www.AffinityRealEstate.com | email: info@affinityrealestate.com | office: 218-237-3333 | fax:218-237-3377



\$1
MLS 7092502 Land
TBD County Highway 36
Frazee MN 56544



website: www.AffinityRealEstate.com | email: info@affinityrealestate.com | office: 218-237-3333 | fax:218-237-3377



\$1
MLS 7092502 Land
TBD County Highway 36
Frazee MN 56544



website: www.AffinityRealEstate.com | email: info@affinityrealestate.com | office: 218-237-3333 | fax:218-237-3377



\$1
MLS 7092502 Land
TBD County Highway 36
Frazee MN 56544



website: www.AffinityRealEstate.com | email: info@affinityrealestate.com | office: 218-237-3333 | fax:218-237-3377



\$1
MLS 7092502 Land
TBD County Highway 36
Frazee MN 56544



website: www.AffinityRealEstate.com | email: info@affinityrealestate.com | office: 218-237-3333 | fax:218-237-3377



\$1
MLS 7092502 Land
TBD County Highway 36
Frazee MN 56544



website: www.AffinityRealEstate.com | email: info@affinityrealestate.com | office: 218-237-3333 | fax:218-237-3377



\$1
MLS 7092502 Land
TBD County Highway 36
Frazee MN 56544



website: www.AffinityRealEstate.com | email: info@affinityrealestate.com | office: 218-237-3333 | fax:218-237-3377



\$1
MLS 7092502 Land
TBD County Highway 36
Frazee MN 56544



website: www.AffinityRealEstate.com | email: info@affinityrealestate.com | office: 218-237-3333 | fax:218-237-3377



\$1
MLS 7092502 Land
TBD County Highway 36
Frazee MN 56544