



MLS 7092516 Land

\$1

103 Acres
Raw Land

TBD Whiskey Creek Dr
Detroit Lakes MN 56501

Status: Active

Description:

Online only real estate auction! 103 +/- acres of land offered in 2 tracts. Located just 7 miles north of Detroit Lakes, this property offers a rare combination of recreational and agricultural opportunity. Rolling hills, mature maple trees, and abundant wildlife make it an excellent hunting property, while a mix of tillable and pasture ground adds strong agricultural value. Multiple good building sites available. Parcel A (lot 1) is 28 +/- acres. Parcel B (lot 2) is 75 +/- acres. Auction opens Monday, July 6th, and closes Friday, July 10th at 12pm. Visit our auction site for online bidding.

Additional Details:

Lot Acres	103
Lot Dimensions	103 acres
School District	22
Taxes	\$726
Taxes with Assessments	\$938
Tax Year	2026

Additional Features:

Driving Directions:

From the intersection of State Hwy 34 and Co Hwy 21 (Richwood Rd), head north on Co Hwy 21 for 7 miles, turn left on Whiskey Creek Dr. and the properties are on the right side.



Listed By:
Counselor Realty Detroit Lakes

Affinity Real Estate Inc. participates in the Regional Multiple Listing Service of Minnesota, Inc Broker Reciprocity (sm) program, allowing us to display other broker's listings on our website. All properties are subject to prior sale, change or withdrawal.



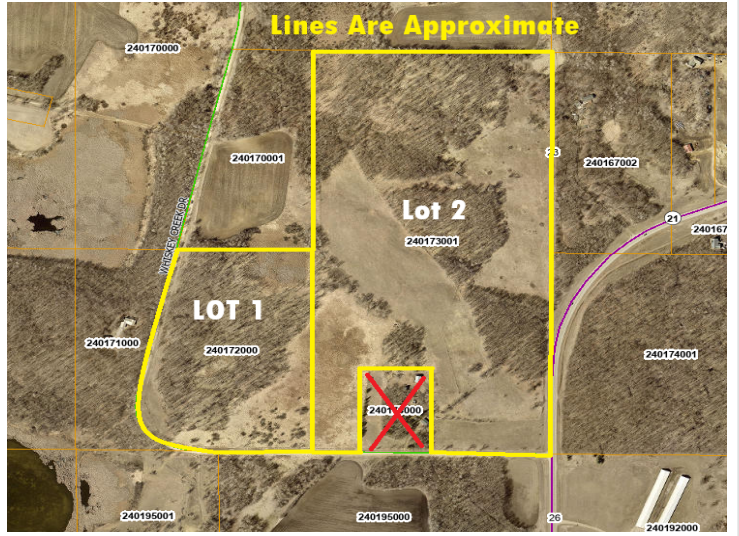
Call Affinity Real Estate

218-237-3333

info@affinityrealestate.com



Affinity Real Estate - 600 Park Avenue South - Park Rapids MN 56470



website: www.AffinityRealEstate.com | email: info@affinityrealestate.com | office: 218-237-3333 | fax:218-237-3377



\$1
MLS 7092516 Land
TBD Whiskey Creek Dr
Detroit Lakes MN 56501



website: www.AffinityRealEstate.com | email: info@affinityrealestate.com | office: 218-237-3333 | fax:218-237-3377

Affinity
REAL ESTATE INC

\$1
MLS 7092516 Land
TBD Whiskey Creek Dr
Detroit Lakes MN 56501



website: www.AffinityRealEstate.com | email: info@affinityrealestate.com | office: 218-237-3333 | fax:218-237-3377

Affinity
REAL ESTATE INC

\$1
MLS 7092516 Land
TBD Whiskey Creek Dr
Detroit Lakes MN 56501



website: www.AffinityRealEstate.com | email: info@affinityrealestate.com | office: 218-237-3333 | fax:218-237-3377



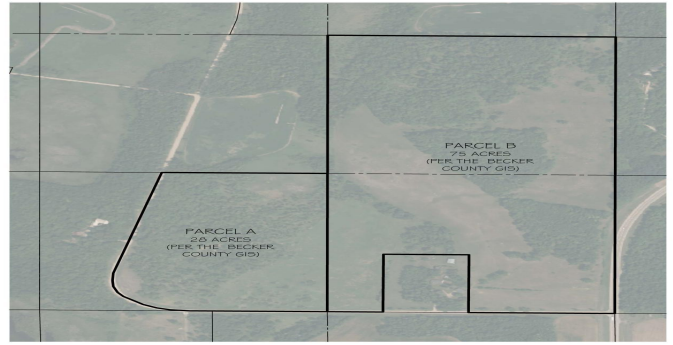
\$1
MLS 7092516 Land
TBD Whiskey Creek Dr
Detroit Lakes MN 56501



website: www.AffinityRealEstate.com | email: info@affinityrealestate.com | office: 218-237-3333 | fax:218-237-3377

Affinity
REAL ESTATE INC

\$1
MLS 7092516 Land
TBD Whiskey Creek Dr
Detroit Lakes MN 56501



website: www.AffinityRealEstate.com | email: info@affinityrealestate.com | office: 218-237-3333 | fax:218-237-3377



\$1
MLS 7092516 Land
TBD Whiskey Creek Dr
Detroit Lakes MN 56501