



MLS 7092552 Lake Land

\$70,000

Description:

Lake living made easy on Wise Lake! Come park your camper in this well maintained, sweet little campground oasis and start relaxing!

The lot offers water, sewer and electric hookup. The association consists of 13 properties, shared amenities include the boat ramp, docks, boat slip, sandy beach swim area, shower house, washer/dryer well & septic system. There are also kayaks, paddle boards, a firepit and a fish cleaning station for you to use.

Located just minutes from town, nestled between the Gull Lake chain and North Long Lake.

Association dues are only paid for the 6 months of use. The association allows rentals to generate extra income.

Additional Details:

Lot Acres	0.04
Lot Dimensions	35x51x36x47
School District	181
Taxes	\$404
Taxes with Assessments	\$404
Tax Year	2025

Additional Features:

Driving Directions:

Hwy 371 North of Brainerd then right at Landsburg Nursery (Johnson Road) then right on Gould Gray and left onto Lisa Court. Lot #2 on the right.



Listed By:
BRIX Real Estate

Affinity Real Estate Inc. participates in the Regional Multiple Listing Service of Minnesota, Inc Broker Reciprocity (sm) program, allowing us to display other broker's listings on our website. All properties are subject to prior sale, change or withdrawal.



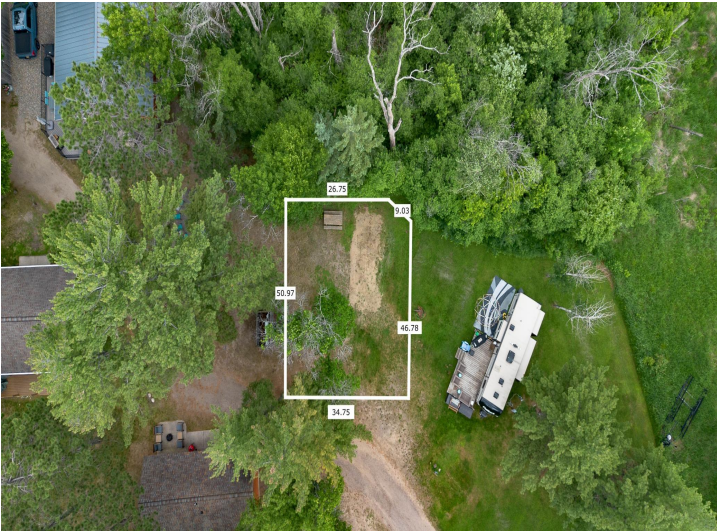
Call Affinity Real Estate

218-237-3333

info@affinityrealestate.com



Affinity Real Estate - 600 Park Avenue South - Park Rapids MN 56470



website: www.AffinityRealEstate.com | email: info@affinityrealestate.com | office: 218-237-3333 | fax: 218-237-3377



\$70,000
MLS 7092552 Lake Land
17241 Lisa Court
Brainerd MN 56401



website: www.AffinityRealEstate.com | email: info@affinityrealestate.com | office: 218-237-3333 | fax:218-237-3377

Affinity
REAL ESTATE INC

\$70,000
MLS 7092552 Lake Land
17241 Lisa Court
Brainerd MN 56401



website: www.AffinityRealEstate.com | email: info@affinityrealestate.com | office: 218-237-3333 | fax:218-237-3377



\$70,000
MLS 7092552 Lake Land
17241 Lisa Court
Brainerd MN 56401



website: www.AffinityRealEstate.com | email: info@affinityrealestate.com | office: 218-237-3333 | fax:218-237-3377



\$70,000
MLS 7092552 Lake Land
17241 Lisa Court
Brainerd MN 56401